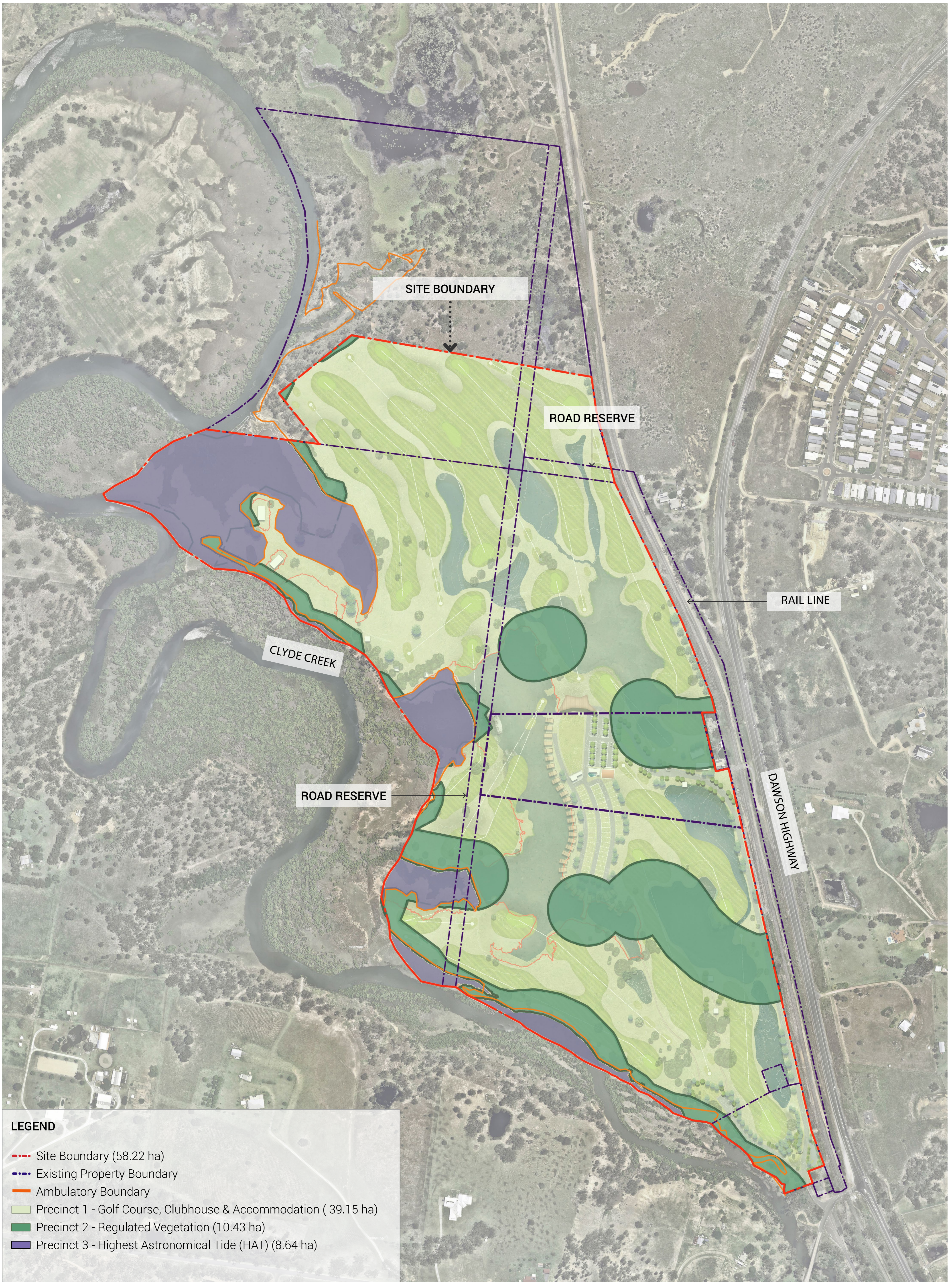


LEGEND
 --- SITE BOUNDARY
 --- EXISTING PROPERTY BOUNDARY



LEGEND

- - - Site Boundary (58.22 ha)
- - - Existing Property Boundary
- Ambulatory Boundary
- Precinct 1 - Golf Course, Clubhouse & Accommodation (39.15 ha)
- Precinct 2 - Regulated Vegetation (10.43 ha)
- Precinct 3 - Highest Astronomical Tide (HAT) (8.64 ha)



LEGEND

- SITE BOUNDARY
- EXISTING PROPERTY BOUNDARY
- AMBULATORY BOUNDARY
- ++++ RAILWAY
- Regulated Vegetation
- 01 GOLF COURSE
- 02 EXISTING WATER BODY
- 03 PROPOSED WATER BODY
- 04 CAR PARKING
- 05 CLUB HOUSE
- 06 RV PARK
- 07 CABINS
- 08 MINI GOLF
- 09 AMENITIES / POOL