

**NFP House**

Not-For-Profit House



TAKING A SUSTAINABLE APPROACH



# NFP House as an essential service

The Peak Body for Community Organisations

NFP House contributes to...

- A **strategic approach** to community funding
- Increased **return on investment** when funding community organisations
- A **reduction in the risks** associated with community investment
- **Strengthened volunteering** and hence **community building, engagement and wellbeing**
- Not for profit sector development via **capacity building**, leading to a **stronger economic contribution**
- Funding **efficiencies** and **improved decision making**
- Opportunities for **strengthening workforces**
- A **physical point of connection** for residents
- Not for profit sector **expertise and assets**
- Sector **data** and an evidence base



# What NFP House Does Differently

NFP House sets itself apart by...

- Building **capacity** and **compliance** in community organisations to make them **sustainable** and not at risk of failure – it's important to have **volunteers** but if the organisation is not financially viable or there is unresolved conflict, those volunteers won't want to stay
- Focusing on **succession planning** and development of **robust systems**, grant application writing and project management skills to improve outcomes and accountability in the expenditure of public monies
- Combining **holding people's hands** to help them with availability of **technological advancements** and support
- Innovative approaches to **generating** and **sustaining volunteers** (refer to page 11, our house infographic)
- **Adopting roles** which Council has recognised are best performed by community groups (rather than internally)
- Being part of the latest **research** from the Pilbara North West Region with **solutions** to improve community investment



# The Need for NFP House is Growing

## NFP House is responding to...

- Volunteering crisis as identified nationally as well as locally
- Decline in volunteer numbers
- Retiring “baby boomers”
- Fraud and non-compliance
- Economic value of volunteering
- The focus on short-term community investment
- Loneliness epidemic



## If NFP House wasn't in operation

The Gladstone Region will see a fundamentally significant gap in...

- Volunteer support
- Support for community organisations to maintain compliance and sustainability
- Taking innovative approaches to effective community investment
- Economic contribution
- Valuable data collection, insight and advocacy for the Not for Profit Sector

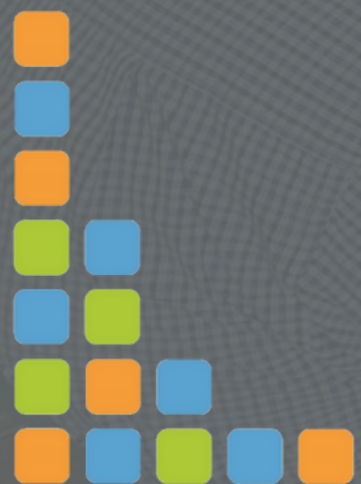




# The State Context

## On a State level...

- We have peak bodies like Volunteer Queensland however they don't provide on-the-ground support
- NFP House fills a gap for regional delivery which has been recognised by Volunteer Queensland, however funding is still short-term project-based
- State Government has initiated a Volunteer Inquiry





## Thank you for previous GRC funding

### 2023

- \$30K Elevator - Health Checks/Assessments
- \$10K Disaster Management - Grant Writing
- \$10K Grassroots - Youth Volunteering
- Together with community organisations, we identify gaps and explore financial opportunities such as Grassroots to deliver facilitated workshops

### 2024

- \$750 Donation - Flights to Canberra (SEGRA)
- \$30K Elevator - Health Checks/Assessments
- \$30K Elevator - Volunteer Portal enhancements for youth

### 2025


- \$10K - Volunteer Portal technical maintenance
- \$15K (possible) - 2025 Volunteer Week

**This benefited a large number of organisations and the wider community  
(unlike funding going to individual organisations only benefiting their members)**

We are now trying to establish a more sustainable funding model for our core operations



# How we're currently funded

Service	Currently Funded?
Help Line/physical available staff 24/7	✗
Grant writing, info, referral, start ups, closures, conflict	✗
Volunteer Portal and volunteer management	 1/5
Volunteering for marginalised groups	✗
Youth volunteering	✗
Regional Report Card monitoring the health of the Sector	✗
Facilitated workshops	✓
Workplace volunteering	✓
Health Checks/Assessments	✓

- 50% Grants
- 40% Social Enterprise - commercial projects for Industry
- We've sought State and Federal funding, Charity status, social enterprise funding and every suitable grant, however, we don't fit the mold so it's not sustainable



# Recent Funded Partnerships

1770 Art Show  
ATQLD  
Banana Shire Council  
Bendigo Community Bank  
Boyne Burnett Inland Rail Trail  
Boyne Island Environmental Education Centre  
Boyne Tannum Football Club  
Boyne Tannum HookUp  
Boyne Tannum Men's Shed  
Calliope District Golf Club  
Calliope River Men's Shed  
Carinity Education  
Central Queensland Motorsports – Benaraby Inc  
Central Queensland Power (CQP)  
Clinton Football Club  
Combined Services Gladstone  
ConocoPhillips  
Cosmos Art for Health Inc  
Discovery Coast Sport & Recreation Association  
Foundation for Rural & Regional Renewal (FRRR)  
Friends of Boyne Valley Inc  
Gladstone Aboriginal & Islanders Cooperative Society Ltd  
Gladstone Animal Rescue Group  
Gladstone Area Water Board (GAWB)  
Gladstone Community Linking Agency  
Gladstone Conservation Council

Gladstone Goorie Centre Indigenous Corporation  
Gladstone Judo Club  
Gladstone Orchid & Foliage Society  
Gladstone Region Air Quality Community Group  
Gladstone Region Together (GRT)  
Gladstone Regional Council  
Gladstone Touch Association  
Heart of Agnes Community Association  
Here for Gladstone  
Integreat Queensland  
Lidiar Group Pty Ltd  
Magenta Community Services  
McCoskers  
NRG Gladstone  
National Job Link  
Parent 2 Parent  
Port Curtis District Scouts  
QAL  
Queensland Energy Resources (QER)  
Santos  
Shell QGC  
Turkey Beach Progress Association  
Valleys Netball Club  
Volunteering Queensland  
Wheatbelt & Beyond Youth Mentoring Inc  
Wiggins Island Coal Export Terminal (WICET)



# We are seeking your help to establish if and how our organisation can be sustainable

1: To be funded as the Peak Body for Community Organisations (in the same model as GAPDL is to Tourism) to provide the services we are already delivering and seeing much need in, such as:

- Providing the wrap around support for volunteer management and the volunteer portal
- Ongoing 24/7 physical availability of staff as a help line providing information, referrals, conflict resolution, start ups, closures, grant writing

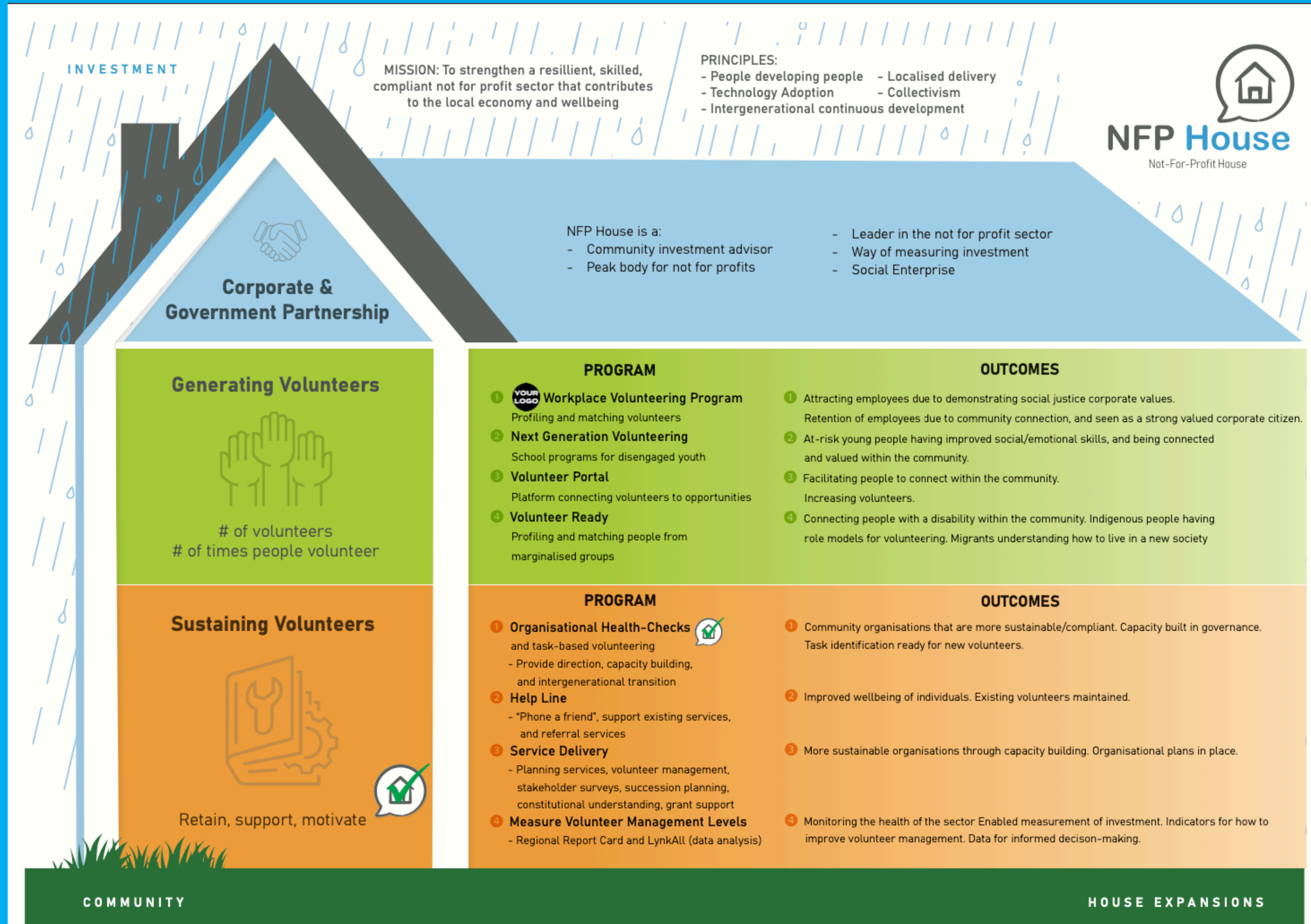
2. To be funded for projects such as through Elevator Program

However, there is the likelihood of financial caps being added that would exclude us from this

The future of NFP House is ominous, given our essential need, how can we become sustainably funded?



# We need help to provide these services







## Our Impact



To hear about how we have helped the local community, please watch the recording of our showcase event from December 2024, found at:

**[nfphouse.org.au/togetherwethrive](https://nfphouse.org.au/togetherwethrive)**

30 minutes duration and hear directly from our community members themselves

