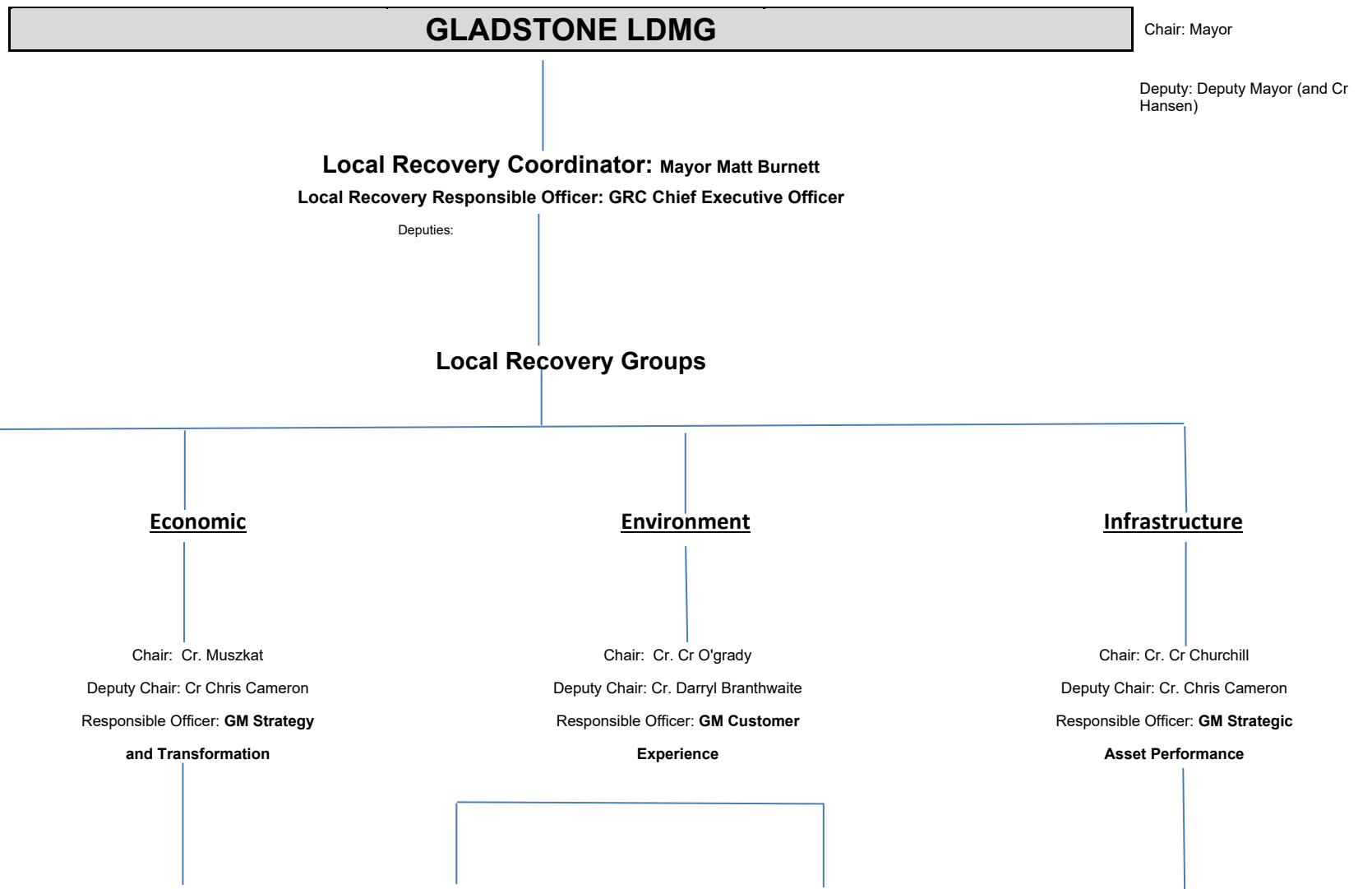


Disaster Management

COUNCIL RECOVERY GROUP STRUCTURE



Human and Social	Economic	Health and Environmental	Building	Infrastructure
Primary Planning & Coordination: GRC Community & Wellbeing	Primary Planning & Coordination: Economic Development Specialist	Primary Planning & Coordination: Health and Biosecurity, Environment and Conservation	Primary Planning & Coordination: Development Services	Primary Planning & Coordination: Operations, Strategic Asset Planning
<i>Human-social recovery includes the coordinated process of supporting affected communities in the provision of:</i>	<i>Economic recovery includes the coordinated process of supporting affected communities in:</i>	<i>Health and Environmental recovery include the coordinated process of supporting affected communities in:</i>	<i>Building recovery includes the coordinated process of supporting affected communities in:</i>	<i>Infrastructure recovery includes the coordinated process of supporting affected communities in:</i>
Restored community support services and networks.	Assessing impact on key economic assets	Identifying and advising on environmental and cultural heritage impacts and the risks caused by the event and response operations (e.g. water quality, disease, soil and groundwater, landscapes, ecosystems, wildlife, heritage places and indigenous cultural heritage).	Providing temporary accommodation.	Identifying communities isolated or with interruptions to potable water and sanitation services and assigning prioritised resources for recovery works.
Support individuals and households.	Stimulating the renewal and growth of the economy within the affected area	Rehabilitating, conserving and supporting the natural recovery of impacted (or at risk) terrestrial, aquatic and marine ecosystems, wildlife, landscapes and natural resources.	Providing assistance/advice to support repair and restoration of State-owned public buildings.	Developing reconstruction projects and activities in collaboration with stakeholders.
Social impact and needs assessment and monitoring.	Facilitating business, industry and economic recovery and renewal	Recovering and conserving impacted or at-risk cultural heritage values and heritage places.	Coordinating building safety inspections.	Developing implementation plans for recovery and reconstruction.
Personal support and information.	Facilitating business assistance, access to funds and loans and employer subsidies	Supporting long term community sustainability needs (e.g. reinstating environmental protections and ecosystem services and advancing Ecologically Sustainable Development principles in built environment recovery, economic recovery and waste management).	Providing building advice and information to support community recovery.	Developing, reviewing and submitting NDRRA submissions for approval.
Physical health and emotional support	Ensure that businesses and industry groups and affected communities are involved in the decision-making process	Ensuring that environmental and health bodies, affected communities and interest groups are involved in the decision-making process	Providing advice to recovery "supply chain".	Implementing recovery and reconstruction plans, including monitoring and reporting.

<p>Psychological, spiritual, cultural and social wellbeing support.</p> <p>Public safety and education support.</p> <p>Activities that ensure affected communities and interest groups are involved in the decision-making process.</p> <p>Temporary accommodation.</p> <p>Financial assistance to help meet immediate essential needs of affected individuals and households and uninsured essential household loss and damage.</p> <p>The Department of Communities, Child Safety and Disability Services is the functional lead agency for Human and Social Recovery.</p>	<p>Recovering from the intangible effects of an event (e.g. loss of business confidence and quality of life etc.)</p> <p>The functional lead agency for economic recovery is the Department of State Development.</p>	<p>The functional lead agency for environmental recovery is the Department of Environment and Heritage Protection and Queensland Health for Health.</p>	<p>The Department of Housing and Public Works is the functional lead agency for building recovery.</p>	<p>The Department of Transport and Main Roads is the functional lead agency for roads and transport recovery. DNRME is the functional lead agency for water and DES for sewer recovery</p>
--	---	---	--	--

Suggested Member	Suggested Member	Suggested Member	Suggested Member	Suggested Member
<ul style="list-style-type: none"> Gladstone Regional Council <i>(To be determined per event, depending on size and scale of event)</i> Dept. of Communities Queensland Health Centrelink 	<ul style="list-style-type: none"> Gladstone Regional Council <i>(To be determined per event, depending on size and scale of event)</i> (Need to determine which roles) Dept. of Tourism Insurance Council of Australia Dept. of Premier & Cabinet DEEDI Dept. of Local Govt. LGAQ GAPDL GEIDB Chambers of commerce Queensland Rural Adjustment 	<ul style="list-style-type: none"> Gladstone Regional Council <i>(To be determined per event, depending on size and scale of event)</i> DERM DEEDI Fitzroy Basin Association Conservation Groups Department of Health DES 	<ul style="list-style-type: none"> Gladstone Regional Council <i>(To be determined per event, depending on size and scale of event)</i> (Need to determine which roles) Dept. of Housing Centrelink Queensland Treasury Lead Agency Department of Infrastructure, Local Government and Planning Building Services Authority 	<ul style="list-style-type: none"> Gladstone Regional Council <i>(To be determined per event, depending on size and scale of event)</i> Dept. of Infrastructure and Planning Dept. of Public Works Qld Treasury Dept. of Transport & Main Roads BSA Queensland Rail Ergon
Support Agencies	Support Agencies	Support Agencies	Support Agencies	Support Agencies
<ul style="list-style-type: none"> Red Cross St Vincent de Paul Salvation Army GiveIT Department of Education, Training and Employment Others as required 	<ul style="list-style-type: none"> A.B. S Insurance Companies Others as required 	<ul style="list-style-type: none"> Environmental Advisors Chemical and Hazardous Materials Advisors RSPCA Gladstone Wildlife DAF Others as required 	<ul style="list-style-type: none"> Utility Owner/Operators Others as required 	<ul style="list-style-type: none"> Dept. Mines & Energy DERM Others as required

Figure 2- Recovery Structure