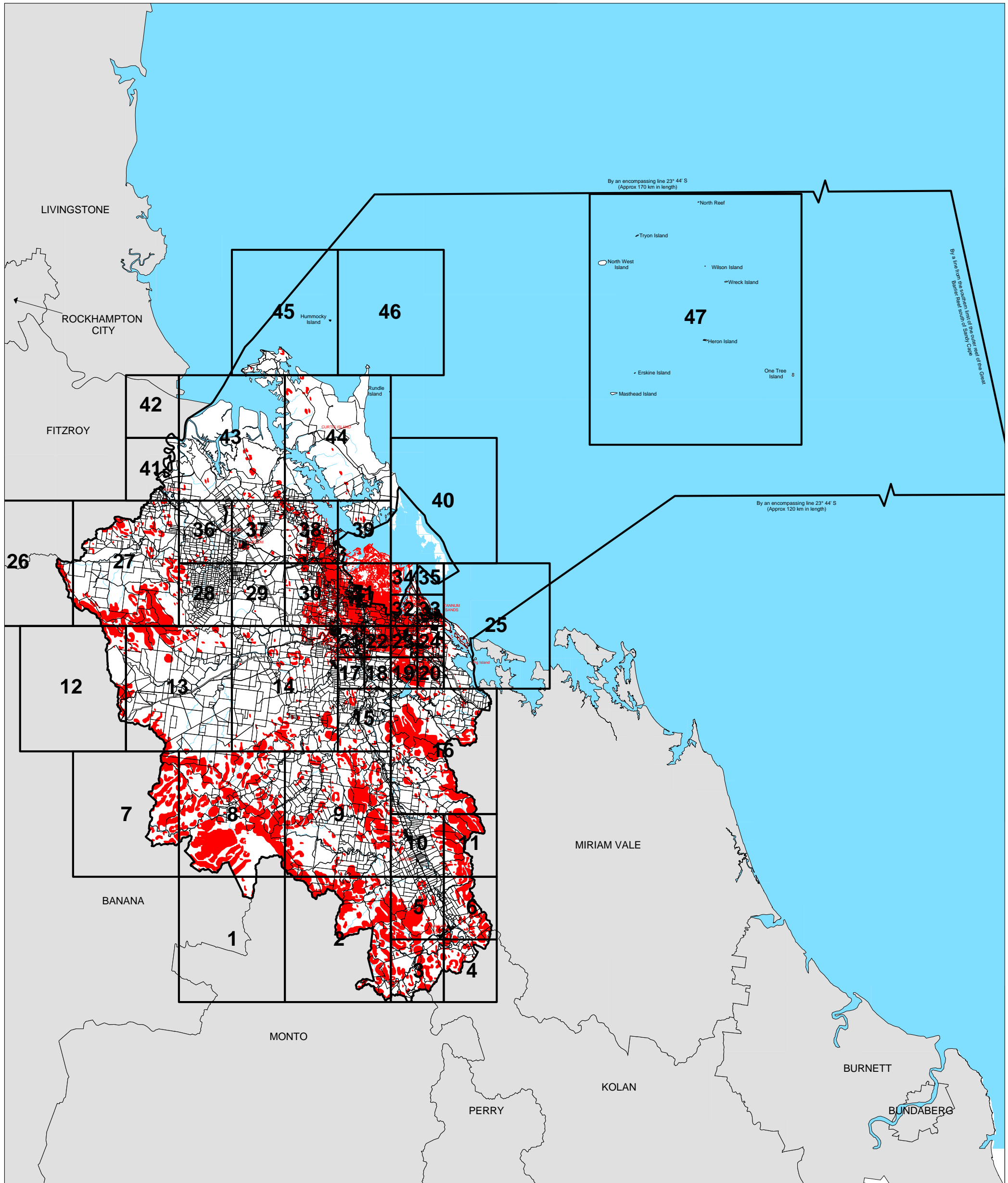




CALLIOPE SHIRE COUNCIL PLANNING SCHEME DEVELOPMENT ON STEEP LAND OVERLAY KEY PLAN

SERIES 09
SHEET No. 00

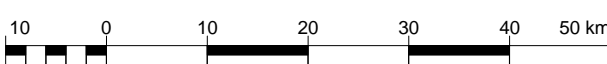


PRODUCED BY CALLIOPE SHIRE COUNCIL
DEVELOPMENT SECTION.

Data Source:
© Calliope Shire Council 2006. In consideration of Calliope Shire Council permitting use of this data you acknowledge and agree that Calliope Shire Council gives no warranty in relation to the data (including accuracy, reliability, completeness, currency or suitability) and accept no liability (including without limitation, liability in negligence) for any loss, damage or costs (including consequential damage) relating to any use of the data. Data must not be used for direct marketing or be used in breach of the privacy laws.

© The State of Queensland (Department of Natural Resources and Water) 2006. In consideration of the State and permitting use of this data you acknowledge and agree that the State gives no warranty in relation to the data (including accuracy, reliability, completeness, currency or suitability) and accept no liability (including without limitation, liability in negligence) for any loss, damage or costs (including consequential damage) relating to any use of the data. Data must not be used for direct marketing or be used in breach of the privacy laws.

Steep Land Analysis provided by Calliope Shire Council.
(Current as at October 2004).



Scale 1:750,000

