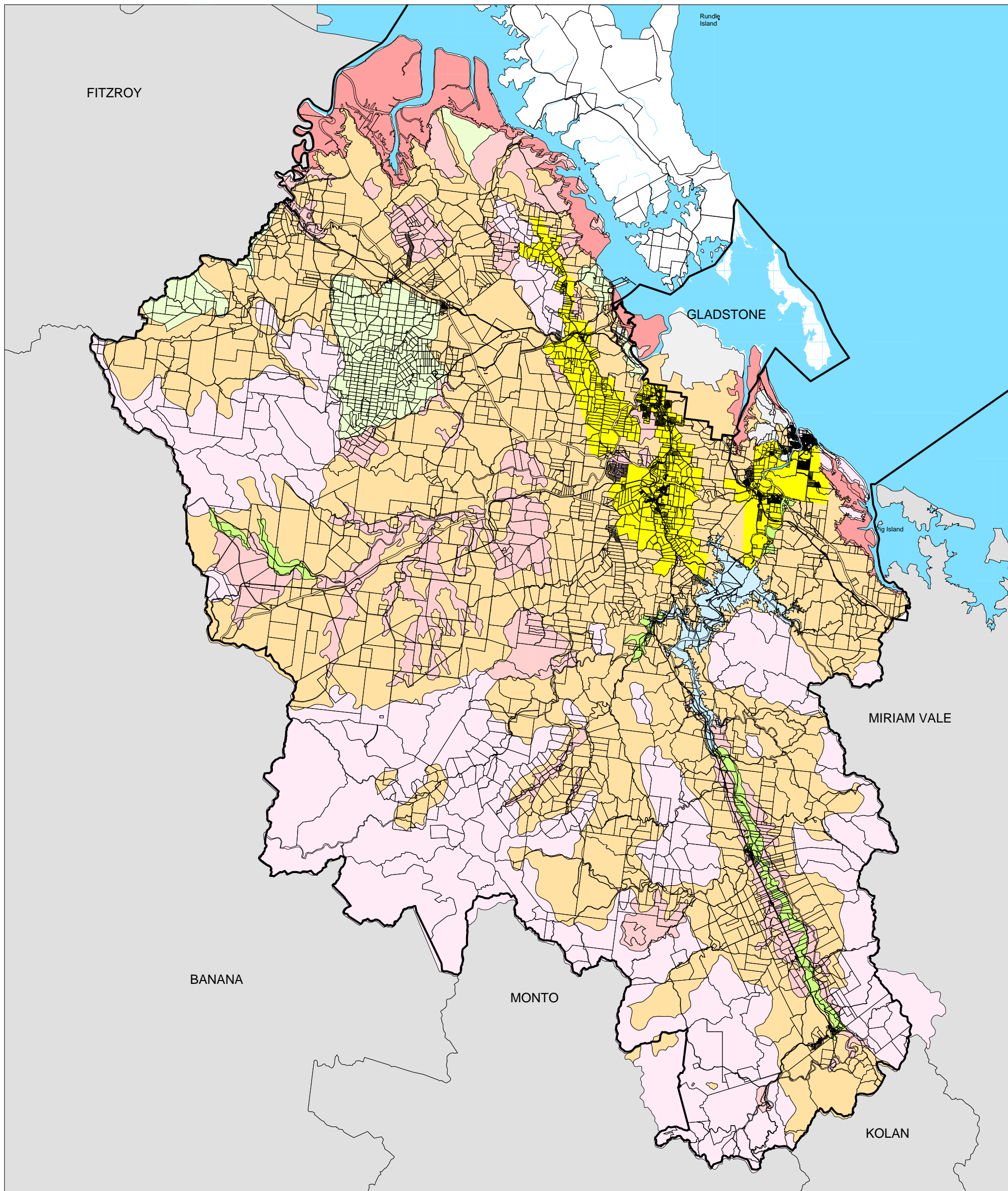




AGRICULTURAL LAND CLASSES CALLIOPE SHIRE



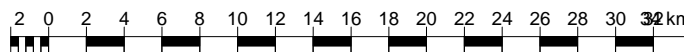
PRODUCED BY CALLIOPE SHIRE COUNCIL
DEVELOPMENT SECTION.

Data Source:
© Calliope Shire Council 2006. In consideration of Calliope Shire Council permitting use of this data you acknowledge and agree that Calliope Shire Council gives no warranty in relation to the data (including accuracy, reliability, completeness, currency or suitability) and accept no liability (including without limitation, liability in negligence) for any loss, damage or costs (including consequential damage) relating to any use of the data. Data must not be used for direct marketing or be used in breach of the privacy laws.

© The State of Queensland (Department of Natural Resources and Water) 2006. In consideration of the State and permitting use of this data you acknowledge and agree that the State gives no warranty in relation to the data (including accuracy, reliability, completeness, currency or suitability) and accept no liability (including without limitation, liability in negligence) for any loss, damage or costs (including consequential damage) relating to any use of the data. Data must not be used for direct marketing or be used in breach of the privacy laws.

LEGEND

- A1 Crop land suitable for rainfed cropping
- A2 Crop land suitable for horticulture
- C1 Pasture land suitable for sown pastures
- C2 Pasture land suitable for native pastures
- C3 Pastural land suitable for light grazing of native pastures
- D Non-agricultural land
- Urban
- See Guideline Map 2
- Limit of inundation Awoonga Dam FSL 40m AHD



Scale 1:400,000



CALLIOPE
SHIRE
COUNCIL