

LEGEND

PESESTRIAN PATHS & BIKEWAYS

EXISTING TRUNK INFRASTRUCTURE

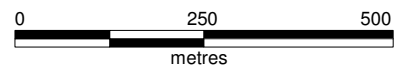
- Asphalt
- Bitumen
- Bitumen + Pavement
- Concrete
- Decomposed Granite
- Earth
- Exposed Aggregate
- Gravel
- Pavers
- Plank & Chain
- Planks
- Sand
- Stenciled Concrete
- Wood
- Woodchip
- Footbridge

FUTURE TRUNK INFRASTRUCTURE

- Asphalt
- Bitumen
- Boardwalk
- Concrete
- Grassed Track
- Gravel
- Paving Blocks
- Plank & Chain
- Turf
- Woodchip

GENERAL

- Property Boundary
- Transport Contributions Catchment



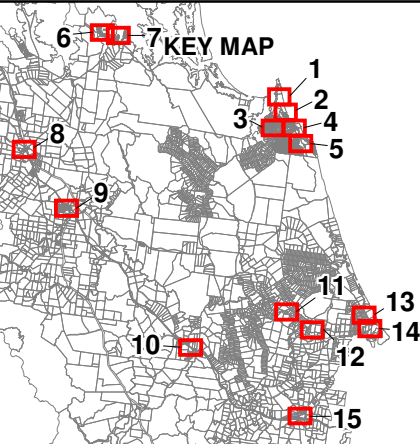
Scale 1 : 10 000 @ A3



Commencement Date
27 February 2009

© The State of Queensland (Natural Resources and Mines) [2007].
Based on Cadastral Data provided with the permission of the Department of Natural Resources and Mines (Current as at July 2007). While every care is taken to ensure the accuracy of this data, the Department of Natural Resources and Mines makes no representations or warranties about its accuracy, reliability, completeness or suitability for any particular purpose and disclaims all responsibility and all liability (including without limitation, liability in negligence) for all expenses, losses, damages (including indirect or consequential damage) and costs which you might incur as a result of the data being inaccurate or incomplete in any way and for any reason.

Data Used Under Licence
to Miriam Vale Shire Council



Drawn: C.A.

Checked: D.S.

Approved: N.C.

Date: 16/12/2008

Rev: 1.1



MIRIAM VALE SHIRE COUNCIL

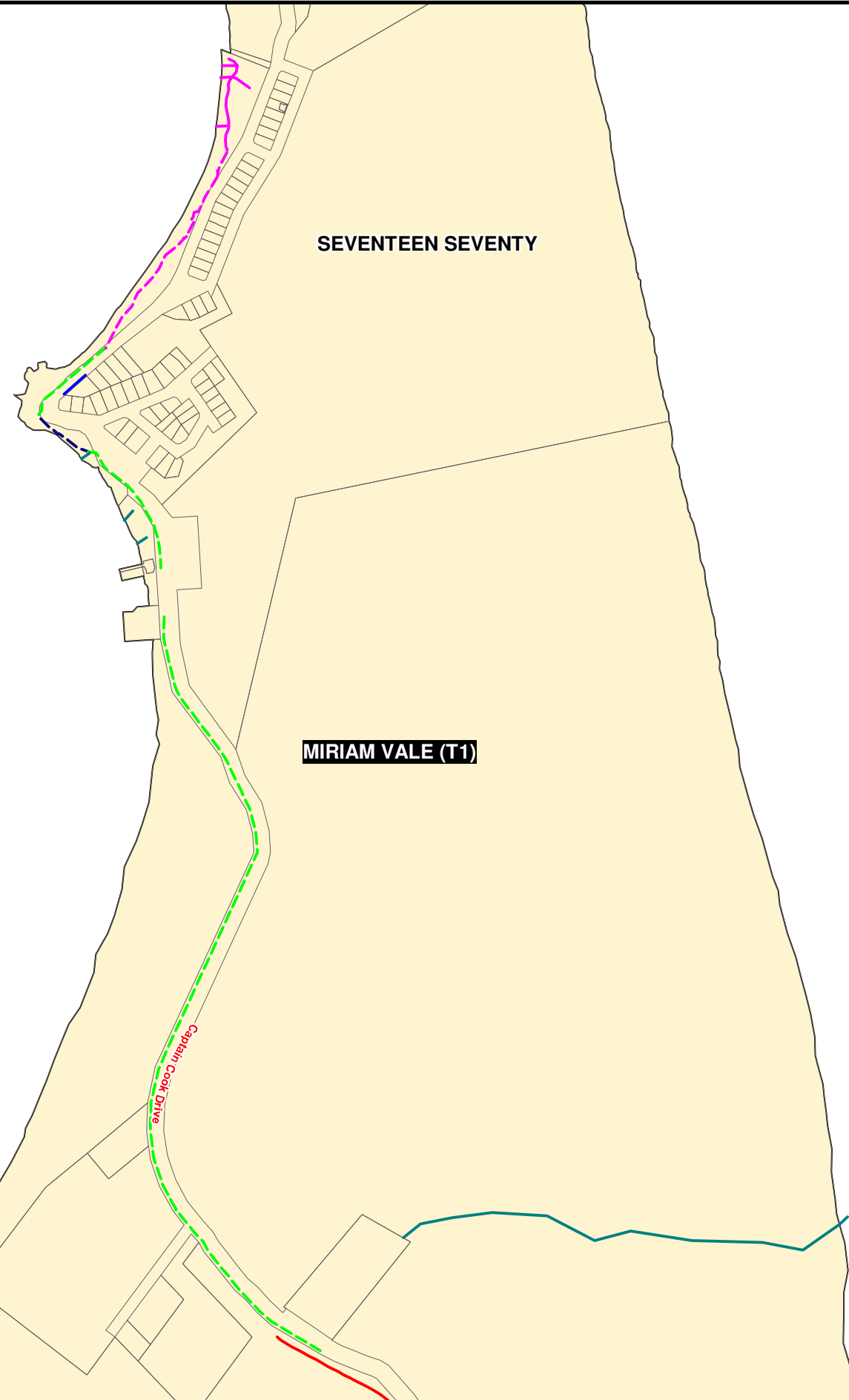
PLANNING SCHEME POLICY - INFRASTRUCTURE CONTRIBUTIONS

TRANSPORT (PEDESTRIAN PATHS & BIKEWAYS) TRUNK INFRASTRUCTURE

PROJECT NUMBER:
0509-1

GRID:
1

DRAWING:
MVSC_ICP_TP_001.WOR



M:\0509-1 Miriam Vale - PIP - ICS\Work\MapInfo\Workspaces\Pathways\081021_MVSC_ICP_TP_REV_1.1

LEGEND

PESESTRIAN PATHS & BIKEWAYS

EXISTING TRUNK INFRASTRUCTURE

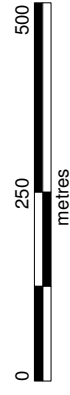
- Asphalt
- Bitumen
- Bitumen + Pavement
- Concrete
- Decomposed Granite
- Earth
- Exposed Aggregate
- Gravel
- Pavers
- Plank & Chain
- Planks
- Sand
- Stenciled Concrete
- Wood
- Woodchip
- Footbridge

FUTURE TRUNK INFRASTRUCTURE

- Asphalt
- Bitumen
- Boardwalk
- Concrete
- Grassed Track
- Gravel
- Paving Blocks
- Plank & Chain
- Turf
- Woodchip

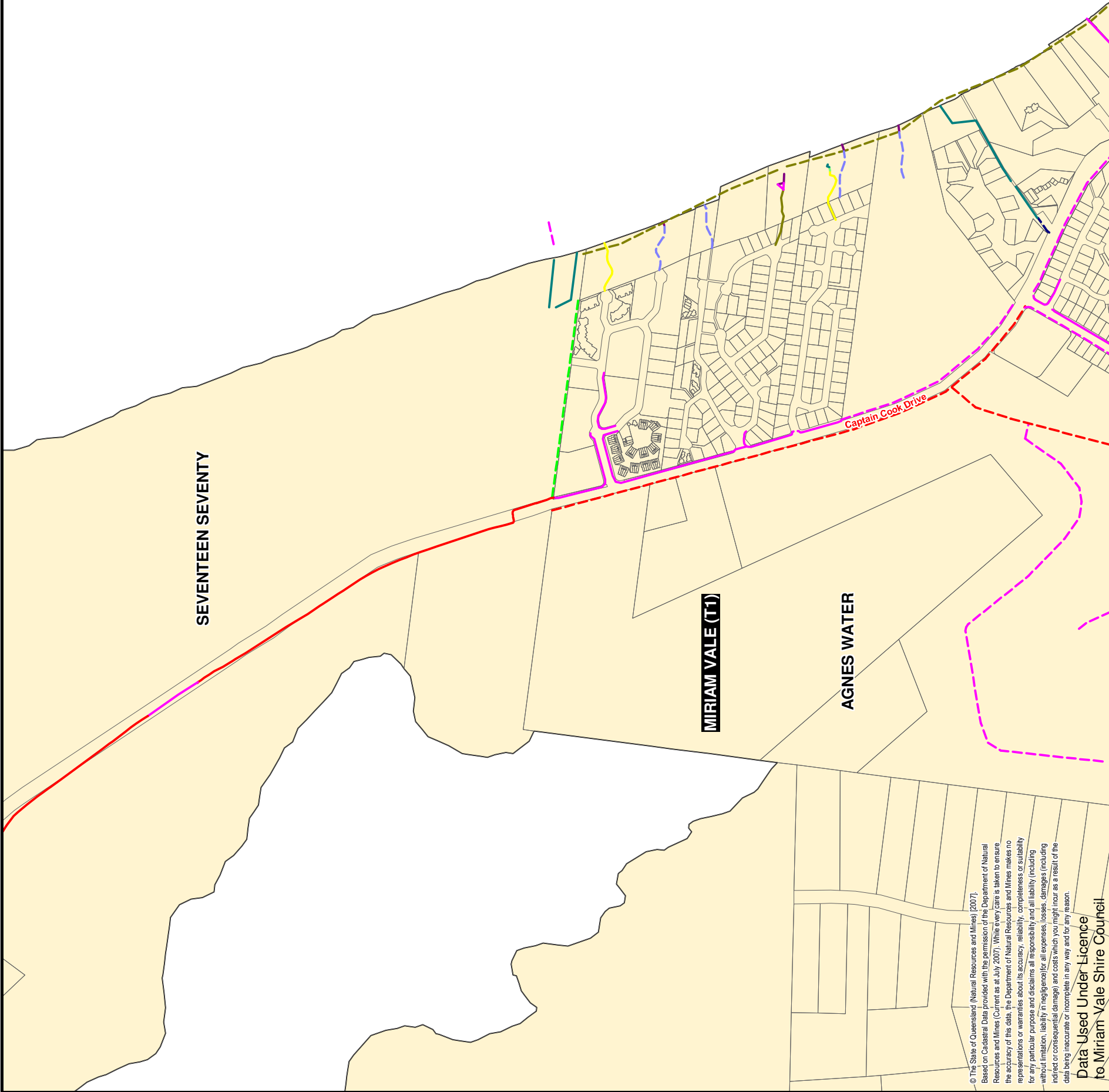
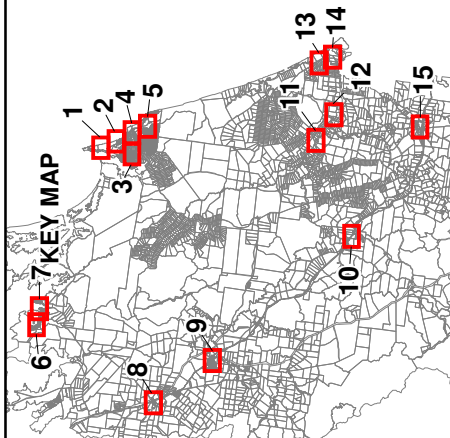
GENERAL

- Property Boundary
- Transport Contributions Catchment



Scale 1 : 10 000 @ A3

Commencement Date
27 February 2009



© The State of Queensland (Natural Resources and Mines) (2007).
Based on Cadastral Data provided with the permission of the Department of Natural Resources and Mines (Current as at July 2007). While every care is taken to ensure the accuracy of this data, the Department of Natural Resources and Mines makes no representations or warranties about its accuracy, reliability, completeness or suitability for any particular purpose and disclaims all responsibility and all liability (including without limitation, liability in negligence) for all expenses, losses, damages (including indirect or consequential damage) and costs which you might incur as a result of the data being inaccurate or incomplete in any way and for any reason.

Data Used Under Licence
to Miriam Vale Shire Council

Drawn: C.A.
Checked: D.S.
Approved: N.C.
Date: 21/10/2008
Rev: 1.1



MIRIAM VALE SHIRE COUNCIL
PLANNING SCHEME POLICY - INFRASTRUCTURE CONTRIBUTIONS
TRANSPORT (PEDESTRIAN PATHS & BIKEWAYS) TRUNK INFRASTRUCTURE

PROJECT NUMBER:
0509-1
GRID:
2
DRAWING:
MVSC_ICP_TP_002.WOR

LEGEND

PESESTRIAN PATHS & BIKEWAYS

EXISTING TRUNK INFRASTRUCTURE

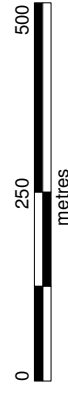
- Asphalt
- Bitumen
- Bitumen + Pavement
- Concrete
- Decomposed Granite
- Earth
- Exposed Aggregate
- Gravel
- Pavers
- Plank & Chain
- Planks
- Sand
- Stenciled Concrete
- Wood
- Woodchip

FUTURE TRUNK INFRASTRUCTURE

- Footbridge
- Asphalt
- Bitumen
- Boardwalk
- Concrete
- Grassed Track
- Gravel
- Paving Blocks
- Plank & Chain
- Turf
- Woodchip

GENERAL

- Property Boundary
- Transport Contributions
- Catchment

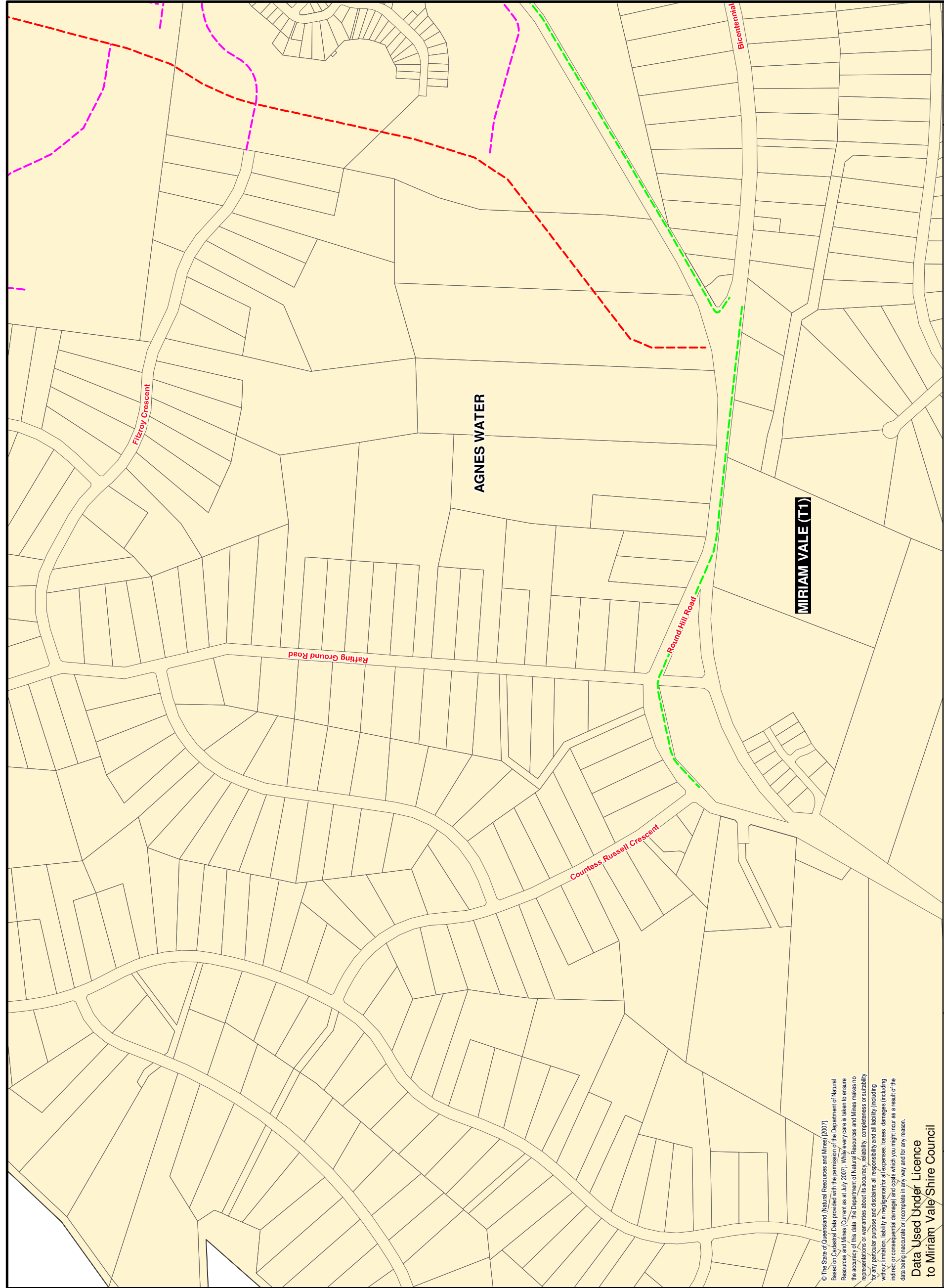
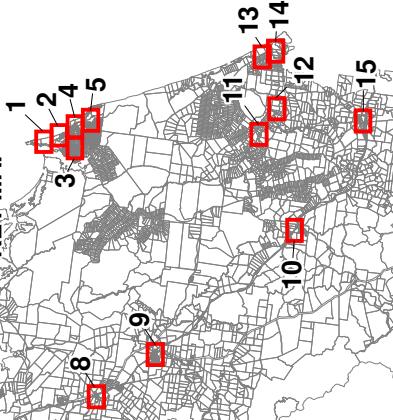


Scale 1 : 10 000 @ A3

Commencement Date
27 February 2009



7 KEY MAP



© The State of Queensland (Natural Resources and Mines) (2007).
Based on Cadastral Data provided with the permission of the Department of Natural Resources and Mines (Current as at July 2007). While every care is taken to ensure the accuracy of this data, the Department of Natural Resources and Mines makes no representations or warranties about its accuracy, reliability, completeness or suitability for any particular purpose and disclaims all responsibility and all liability (including without limitation, liability in negligence) for all expenses, losses, damages (including indirect or consequential damage) and costs which you might incur as a result of the data being inaccurate or incomplete in any way and for any reason.

Data Used Under Licence
to Miriam Vale Shire Council

Drawn: C.A.
Checked: D.S.
Approved: N.C.
Date: 21/10/2008
Rev: 1.1



MIRIAM VALE SHIRE COUNCIL

PLANNING SCHEME POLICY - INFRASTRUCTURE CONTRIBUTIONS

TRANSPORT (PEDESTRIAN PATHS & BIKEWAYS) TRUNK INFRASTRUCTURE

PROJECT NUMBER:
0509-1
GRID:
3
DRAWING:
MVSC_ICP_TP_003.WOR

LEGEND

PESESTRIAN PATHS & BIKEWAYS

EXISTING TRUNK INFRASTRUCTURE

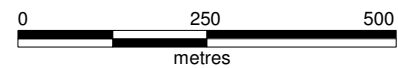
- Asphalt
- Bitumen
- Bitumen + Pavement
- Concrete
- Decomposed Granite
- Earth
- Exposed Aggregate
- Gravel
- Pavers
- Plank & Chain
- Planks
- Sand
- Stenciled Concrete
- Wood
- Woodchip
- Footbridge

FUTURE TRUNK INFRASTRUCTURE

- - - Asphalt
- - - Bitumen
- - - Boardwalk
- - - Concrete
- - - Grassed Track
- - - Gravel
- - - Paving Blocks
- - - Plank & Chain
- - - Turf
- - - Woodchip

GENERAL

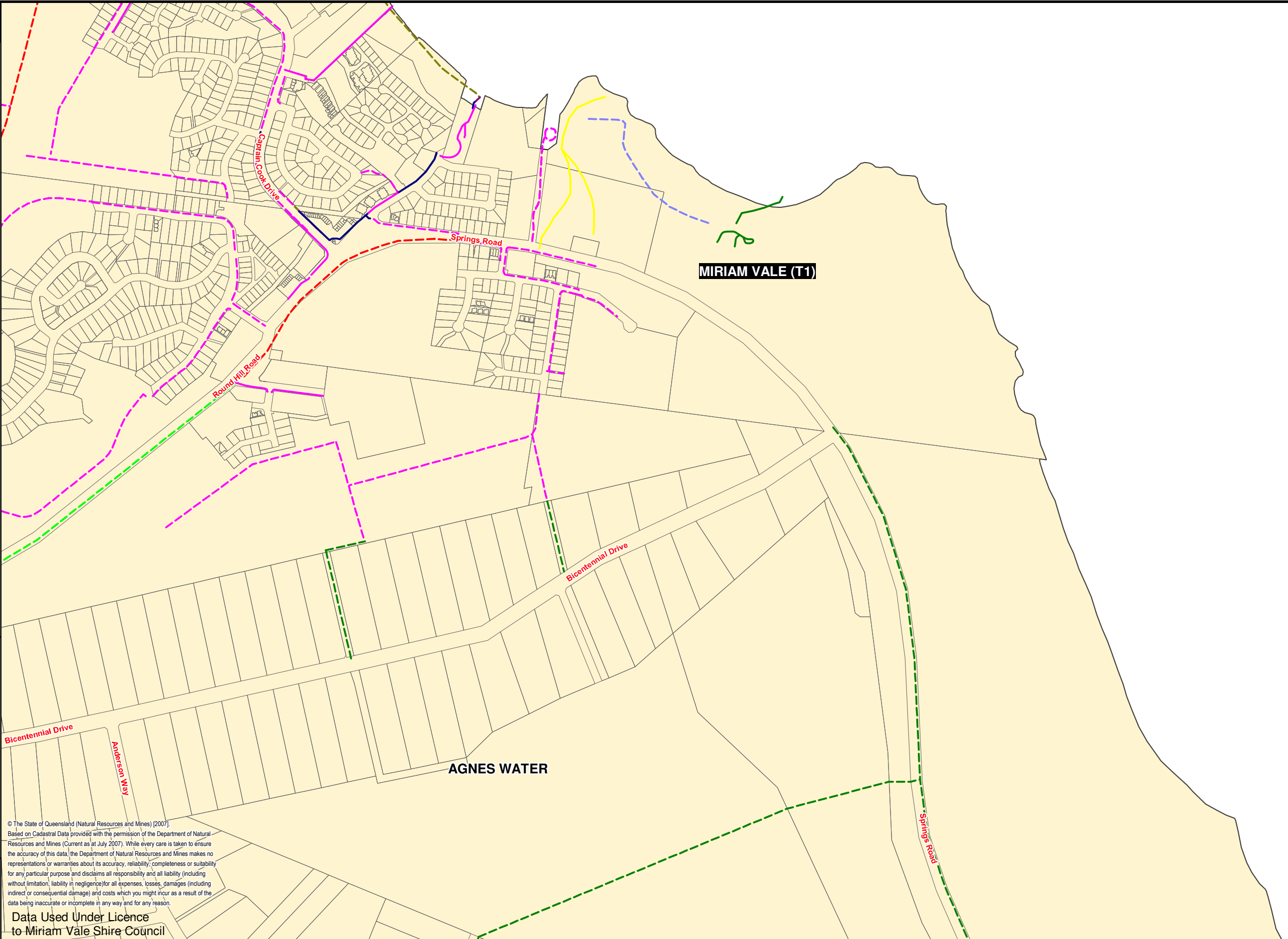
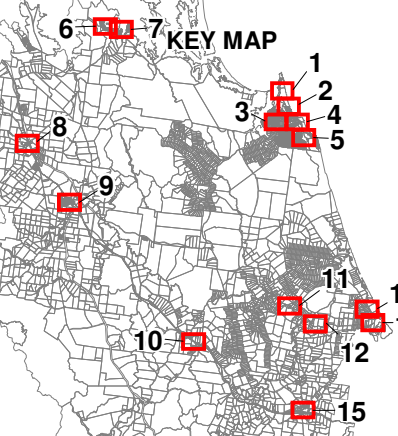
- Property Boundary
- Transport Contributions Catchment



Scale 1 : 10 000 @ A3



Commencement Date
27 February 2009



© The State of Queensland (Natural Resources and Mines) [2007].
Based on Cadastral Data provided with the permission of the Department of Natural Resources and Mines (Current as at July 2007). While every care is taken to ensure the accuracy of this data, the Department of Natural Resources and Mines makes no representations or warranties about its accuracy, reliability, completeness or suitability for any particular purpose and disclaims all responsibility and all liability (including without limitation, liability in negligence) for all expenses, losses, damages (including indirect or consequential damage) and costs which you might incur as a result of the data being inaccurate or incomplete in any way and for any reason.

Data Used Under Licence
to Miriam Vale Shire Council

Drawn: C.A.

Checked: D.S.

Approved: N.C.

Date: 16/12/2008

Rev: 1.1



MIRIAM VALE SHIRE COUNCIL

PLANNING SCHEME POLICY - INFRASTRUCTURE CONTRIBUTIONS

TRANSPORT (PEDESTRIAN PATHS & BIKEWAYS) TRUNK INFRASTRUCTURE

PROJECT NUMBER:
0509-1

GRID:
4

DRAWING:
MVSC_ICP_TP_004.WOR

M:\0509-1 Miriam Vale - PIP_ICP\Work\MapInfo\Workspaces\Pathways\081021_MVSC_ICP_TP_REV_1.1

LEGEND

PESESTRIAN PATHS & BIKEWAYS

EXISTING TRUNK INFRASTRUCTURE

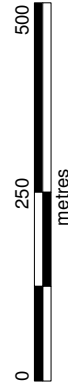
- Asphalt
- Bitumen
- Bitumen + Pavement
- Concrete
- Decomposed Granite
- Earth
- Exposed Aggregate
- Gravel
- Pavers
- Plank & Chain
- Planks
- Sand
- Stenciled Concrete
- Wood
- Woodchip
- Footbridge

FUTURE TRUNK INFRASTRUCTURE

- Asphalt
- Bitumen
- Boardwalk
- Concrete
- Grassed Track
- Gravel
- Paving Blocks
- Plank & Chain
- Turf
- Woodchip

GENERAL

- Property Boundary
- Transport Contributions
- Catchment

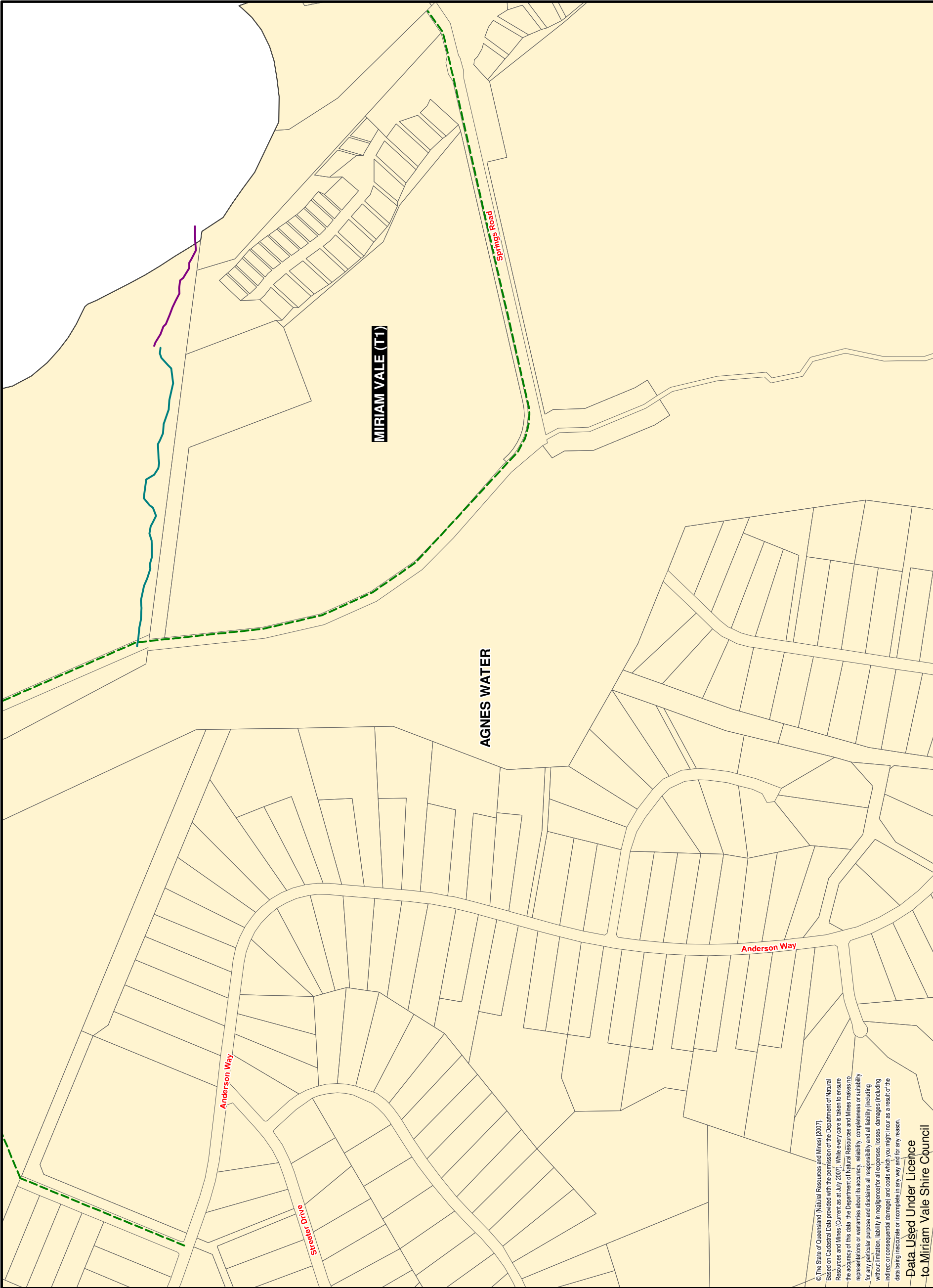
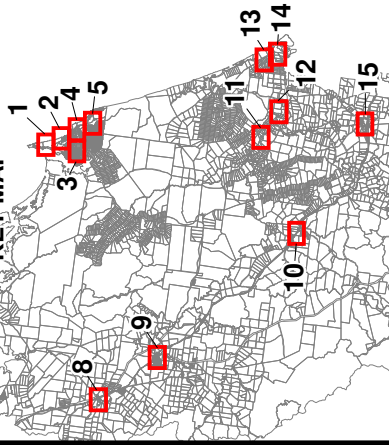


Scale 1 : 10 000 @ A3

Commencement Date
27 February 2009



7 KEY MAP



© The State of Queensland (Natural Resources and Mines) (2007).
Based on Cadastral Data provided with the permission of the Department of Natural Resources and Mines (Current as at July 2007). While every care is taken to ensure the accuracy of this data, the Department of Natural Resources and Mines makes no representations or warranties about its accuracy, reliability, completeness or suitability for any particular purpose and disclaims all responsibility and all liability (including without limitation, liability in negligence) for all expenses, losses, damages (including indirect or consequential damage) and costs which you might incur as a result of the data being inaccurate or incomplete in any way and for any reason.

Data Used Under Licence
to Miriam Vale Shire Council

Drawn: C.A.
Checked: D.S.
Approved: N.C.
Date: 21/10/2008
Rev: 1.1



MIRIAM VALE SHIRE COUNCIL
PLANNING SCHEME POLICY - INFRASTRUCTURE CONTRIBUTIONS
TRANSPORT (PEDESTRIAN PATHS & BIKEWAYS) TRUNK INFRASTRUCTURE

PROJECT NUMBER:
0509-1
GRID:
5
DRAWING:
MVSC_ICP_TP_005.WOR

LEGEND

PEDESTRIAN PATHS & BIKEWAYS

EXISTING TRUNK INFRASTRUCTURE

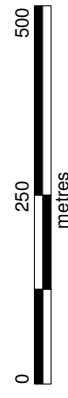
- Asphalt
- Bitumen
- Bitumen + Pavement
- Concrete
- Decomposed Granite
- Earth
- Exposed Aggregate
- Gravel
- Pavers
- Plank & Chain
- Planks
- Sand
- Stenciled Concrete
- Wood
- Woodchip
- Footbridge

FUTURE TRUNK INFRASTRUCTURE

- Asphalt
- Bitumen
- Boardwalk
- Concrete
- Grassed Track
- Gravel
- Paving Blocks
- Plank & Chain
- Turf
- Woodchip

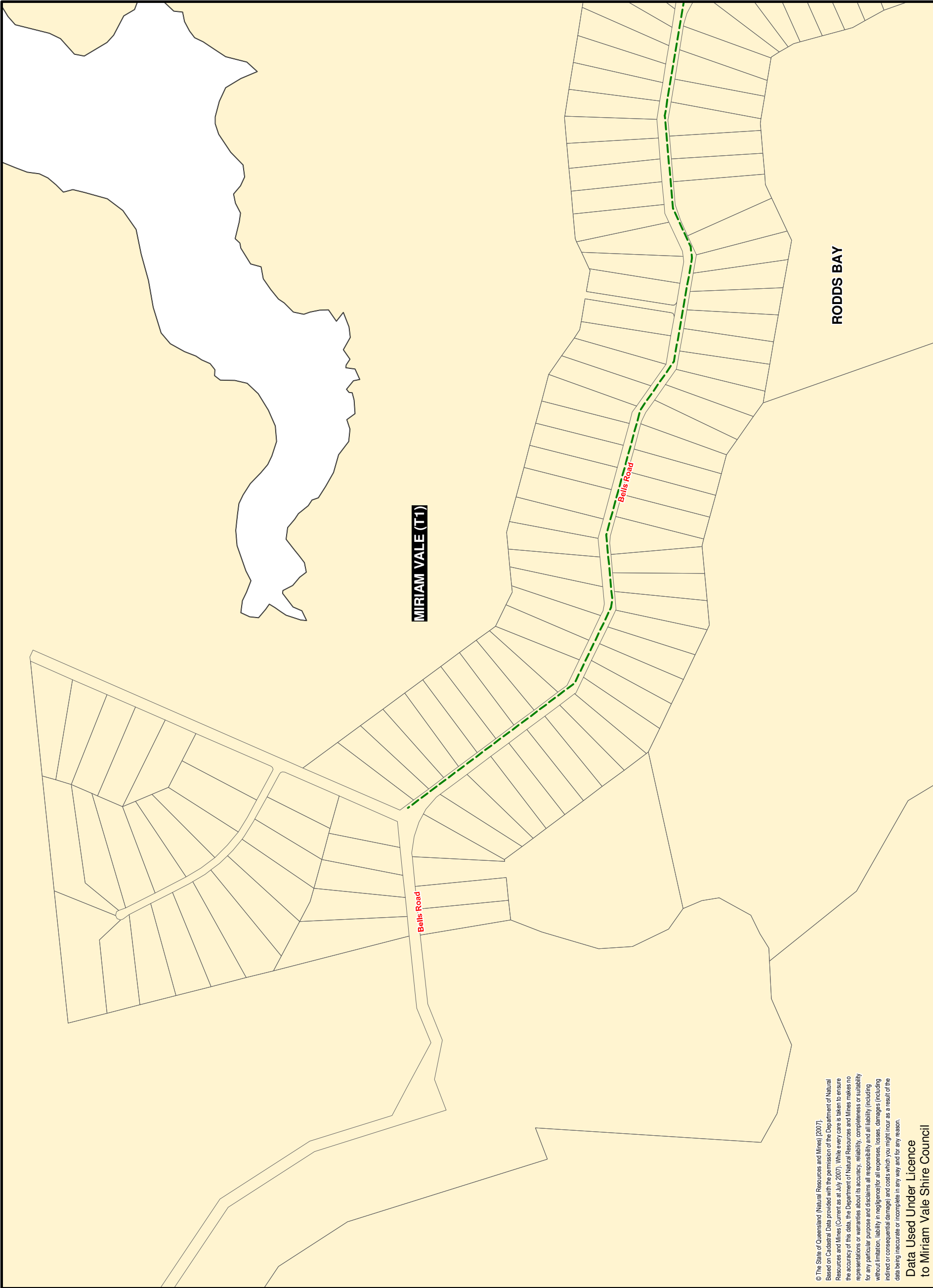
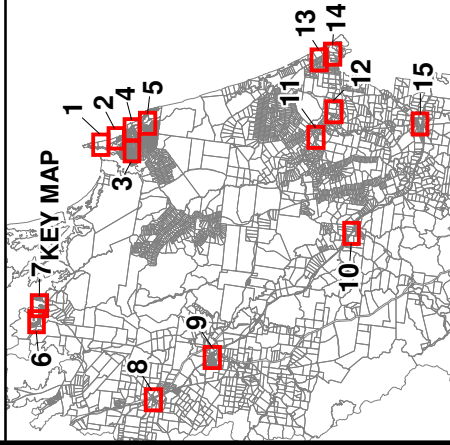
GENERAL

- Property Boundary
- Transport Contributions Catchment



Scale 1 : 10 000 @ A3

Commencement Date
27 February 2009



© The State of Queensland (Natural Resources and Mines) (2007).
Based on Cadastral Data provided with the permission of the Department of Natural Resources and Mines (Current as at July 2007). While every care is taken to ensure the accuracy of this data, the Department of Natural Resources and Mines makes no representations or warranties about its accuracy, reliability, completeness or suitability for any particular purpose and disclaims all responsibility and liability (including without limitation, liability in negligence) for all expenses, losses, damages (including indirect or consequential damage) and costs which you might incur as a result of the data being inaccurate or incomplete in any way and for any reason.

Data Used Under Licence
to Miriam Vale Shire Council

Drawn: C.A.

Checked: D.S.

Approved: N.C.

Date: 21/10/2008

Rev: 1.1



MIRIAM VALE SHIRE COUNCIL

PLANNING SCHEME POLICY - INFRASTRUCTURE CONTRIBUTIONS

TRANSPORT (PEDESTRIAN PATHS & BIKEWAYS) TRUNK INFRASTRUCTURE

PROJECT NUMBER:
0509-1

GRID:
6

DRAWING:
MVSC_ICP_TP_006.WOR

LEGEND

PEDESTRIAN PATHS & BIKEWAYS

EXISTING TRUNK INFRASTRUCTURE

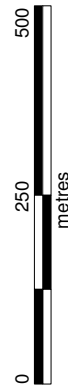
- Asphalt
- Bitumen
- Bitumen + Pavement
- Concrete
- Decomposed Granite
- Earth
- Exposed Aggregate
- Gravel
- Pavers
- Plank & Chain
- Planks
- Sand
- Stenciled Concrete
- Wood
- Woodchip
- Footbridge

FUTURE TRUNK INFRASTRUCTURE

- Asphalt
- Bitumen
- Boardwalk
- Concrete
- Grassed Track
- Gravel
- Paving Blocks
- Plank & Chain
- Turf
- Woodchip

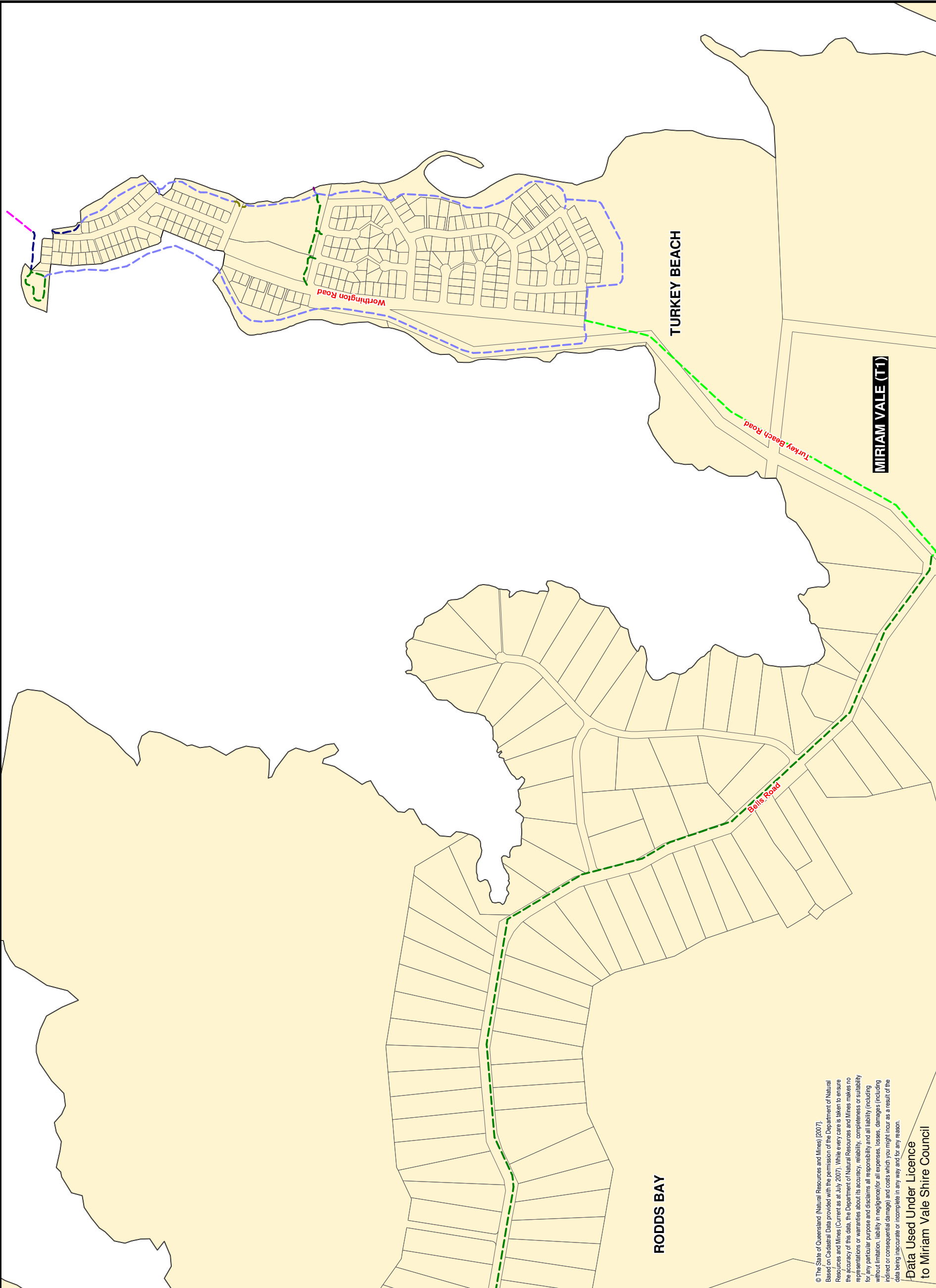
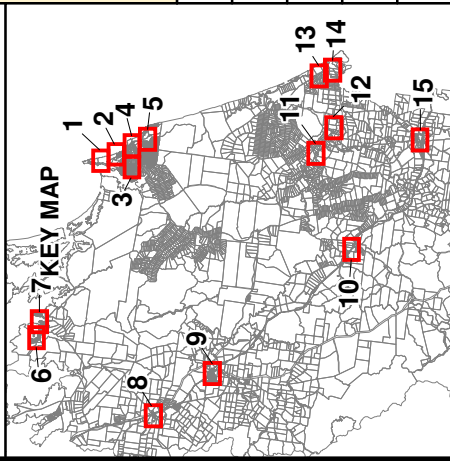
GENERAL

- Property Boundary
- Transport Contributions
- Catchment



Scale 1 : 10 000 @ A3

Commencement Date
27 February 2009



© The State of Queensland (Natural Resources and Mines) (2007).
Based on Cadastral Data provided with the permission of the Department of Natural Resources and Mines (Current as at July 2007). While every care is taken to ensure the accuracy of this data, the Department of Natural Resources and Mines makes no representations or warranties about its accuracy, reliability, completeness or suitability for any particular purpose and disclaims all responsibility and all liability (including without limitation, liability in negligence) for all expenses, losses, damages (including indirect or consequential damage) and costs which you might incur as a result of the data being inaccurate or incomplete in any way and for any reason.

Data Used Under Licence
to Miriam Vale Shire Council

Drawn: C.A.

Checked: D.S.

Approved: N.C.

Date: 21/10/2008

Rev: 1.1



MIRIAM VALE SHIRE COUNCIL

PLANNING SCHEME POLICY - INFRASTRUCTURE CONTRIBUTIONS

TRANSPORT (PEDESTRIAN PATHS & BIKEWAYS) TRUNK INFRASTRUCTURE

PROJECT NUMBER:
0509-1

GRID: **7**

DRAWING:
MVSC_ICP_TP_007.WOR

LEGEND

PEDESTRIAN PATHS & BIKEWAYS

EXISTING TRUNK INFRASTRUCTURE

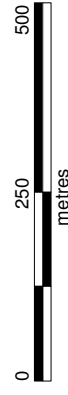
- Asphalt
- Bitumen
- Bitumen + Pavement
- Concrete
- Decomposed Granite
- Earth
- Exposed Aggregate
- Gravel
- Pavers
- Plank & Chain
- Planks
- Sand
- Stenciled Concrete
- Wood
- Woodchip

FUTURE TRUNK INFRASTRUCTURE

- Footbridge
- Asphalt
- Bitumen
- Boardwalk
- Concrete
- Grassed Track
- Gravel
- Paving Blocks
- Plank & Chain
- Turf
- Woodchip

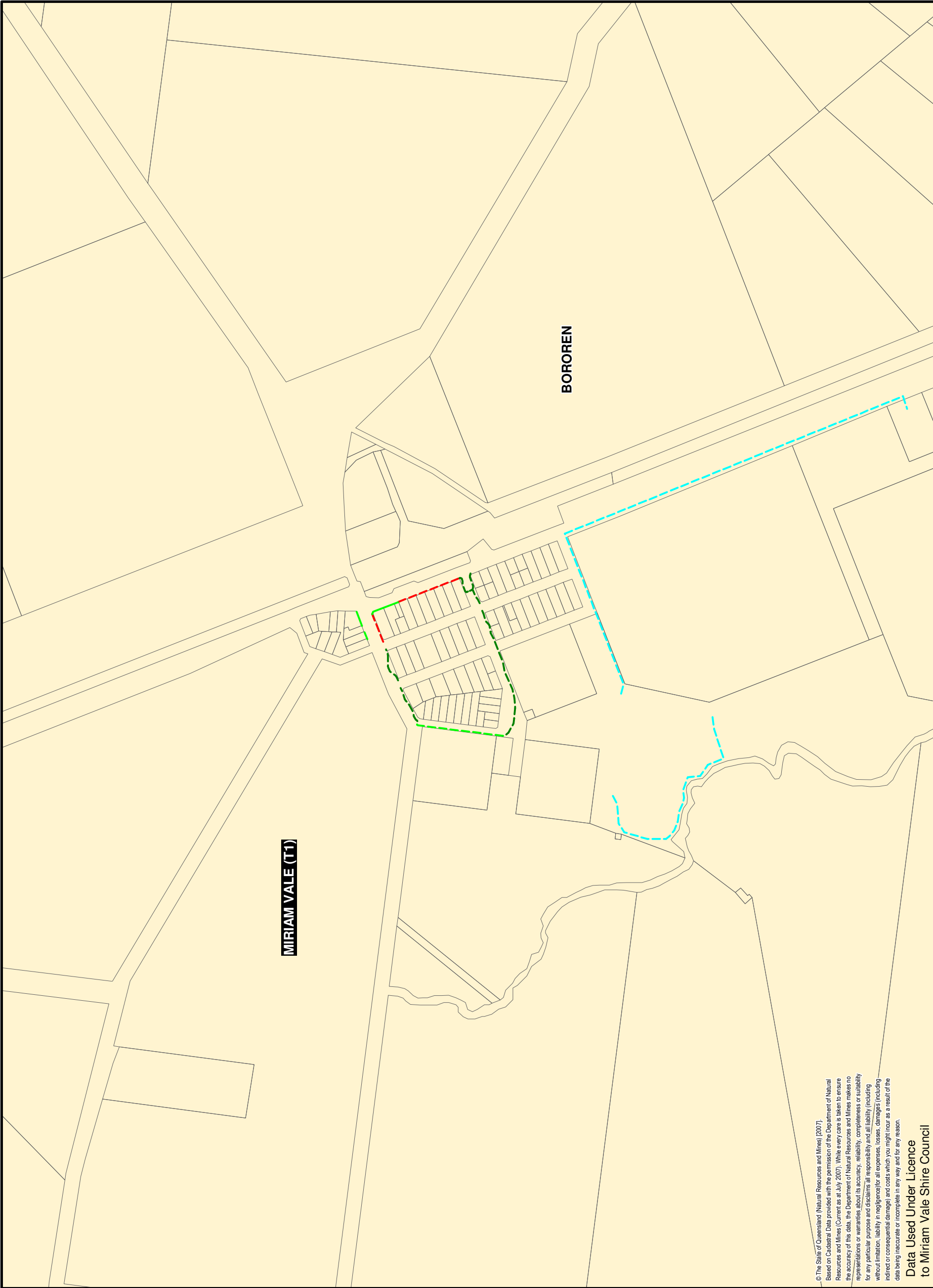
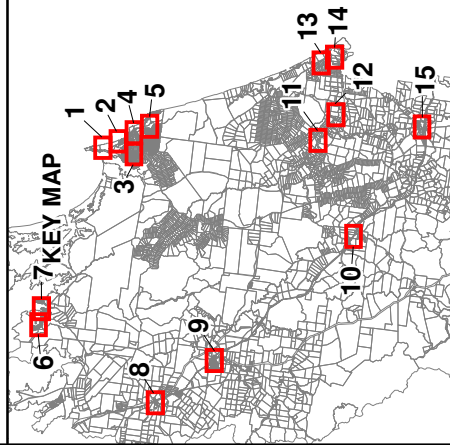
GENERAL

- Property Boundary
- Transport Contributions Catchment



Scale 1 : 10 000 @ A3

Commencement Date
27 February 2009



© The State of Queensland (Natural Resources and Mines) (2007).
Based on Cadastral Data provided with the permission of the Department of Natural Resources and Mines (Current as at July 2007). While every care is taken to ensure the accuracy of this data, the Department of Natural Resources and Mines makes no representations or warranties about its accuracy, reliability, completeness or suitability for any particular purpose and disclaims all responsibility and all liability (including without limitation, liability in negligence) for all expenses, losses, damages (including indirect or consequential damage) and costs which you might incur as a result of the data being inaccurate or incomplete in any way and for any reason.

Data Used Under Licence
to Miriam Vale Shire Council

Drawn: C.A.

Checked: D.S.

Approved: N.C.

Date: 21/10/2008

Rev: 1.1



MIRIAM VALE SHIRE COUNCIL

PLANNING SCHEME POLICY - INFRASTRUCTURE CONTRIBUTIONS

TRANSPORT (PEDESTRIAN PATHS & BIKEWAYS) TRUNK INFRASTRUCTURE

PROJECT NUMBER:
0509-1

GRID:
8

DRAWING:
MVSC_ICP_TP_008.WOR

LEGEND

PEDESTRIAN PATHS & BIKEWAYS

EXISTING TRUNK INFRASTRUCTURE

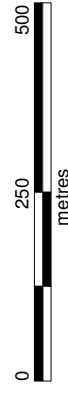
- Asphalt
- Bitumen
- Bitumen + Pavement
- Concrete
- Decomposed Granite
- Earth
- Exposed Aggregate
- Gravel
- Pavers
- Plank & Chain
- Planks
- Sand
- Stenciled Concrete
- Wood
- Woodchip
- Footbridge

FUTURE TRUNK INFRASTRUCTURE

- Asphalt
- Bitumen
- Boardwalk
- Concrete
- Grassed Track
- Gravel
- Paving Blocks
- Plank & Chain
- Turf
- Woodchip

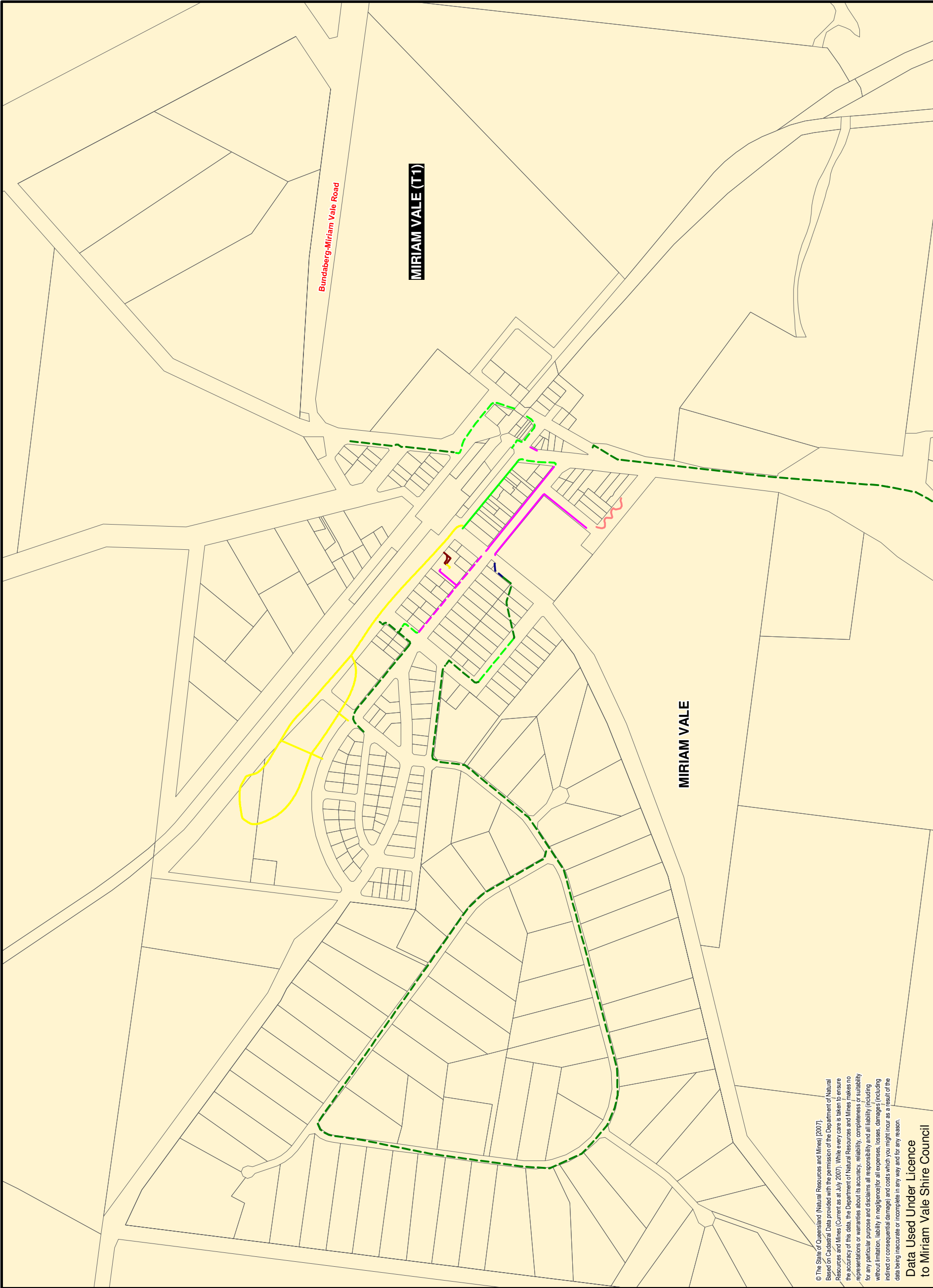
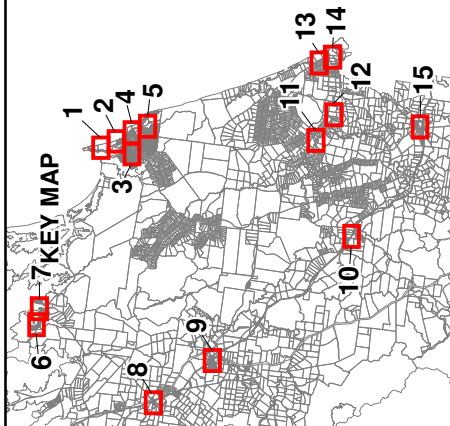
GENERAL

- Property Boundary
- Transport Contributions
- Catchment



Scale 1 : 10 000 @ A3

Commencement Date
27 February 2009



© The State of Queensland (Natural Resources and Mines) (2007).
Based on Cadastral Data provided with the permission of the Department of Natural Resources and Mines (Current as at July 2007). While every care is taken to ensure the accuracy of this data, the Department of Natural Resources and Mines makes no representations or warranties about its accuracy, reliability, completeness or suitability for any particular purpose and disclaims all responsibility and all liability (including without limitation, liability in negligence) for all expenses, losses, damages (including indirect or consequential damage) and costs which you might incur as a result of the data being inaccurate or incomplete in any way and for any reason.

Data Used Under Licence
to Miriam Vale Shire Council

Drawn: C.A.

Checked: D.S.

Approved: N.C.

Date: 21/10/2008

Rev: 1.1



MIRIAM VALE SHIRE COUNCIL

PLANNING SCHEME POLICY - INFRASTRUCTURE CONTRIBUTIONS

TRANSPORT (PEDESTRIAN PATHS & BIKEWAYS) TRUNK INFRASTRUCTURE

PROJECT NUMBER:
0509-1

GRID:
9

DRAWING:
MVSC_ICP_TP_009.WOR

LEGEND

PEDESTRIAN PATHS & BIKEWAYS

EXISTING TRUNK INFRASTRUCTURE

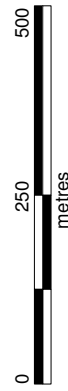
- Asphalt
- Bitumen
- Bitumen + Pavement
- Concrete
- Decomposed Granite
- Earth
- Exposed Aggregate
- Gravel
- Pavers
- Plank & Chain
- Planks
- Sand
- Stenciled Concrete
- Wood
- Woodchip
- Footbridge

FUTURE TRUNK INFRASTRUCTURE

- Asphalt
- Bitumen
- Boardwalk
- Concrete
- Grassed Track
- Gravel
- Paving Blocks
- Plank & Chain
- Turf
- Woodchip

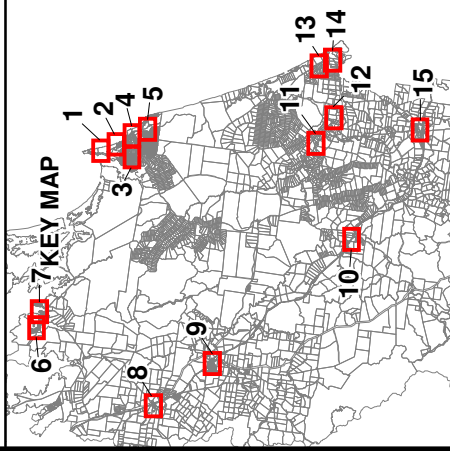
GENERAL

- Property Boundary
- Transport Contributions Catchment



Scale 1 : 10 000 @ A3

Commencement Date
27 February 2009



© The State of Queensland (Natural Resources and Mines) (2007).
Based on Cadastral Data provided with the permission of the Department of Natural Resources and Mines (Current as at July 2007). While every care is taken to ensure the accuracy of this data, the Department of Natural Resources and Mines makes no representations or warranties about its accuracy, reliability, completeness or suitability for any particular purpose and disclaims all responsibility and all liability (including without limitation, liability in negligence) for all expenses, losses, damages (including indirect or consequential damage) and costs which you might incur as a result of the data being inaccurate or incomplete in any way and for any reason.

Data Used Under Licence
to Miriam Vale Shire Council

Drawn: C.A.

Checked: D.S.

Approved: N.C.

Date: 21/10/2008

Rev: 1.1



MIRIAM VALE SHIRE COUNCIL

PLANNING SCHEME POLICY - INFRASTRUCTURE CONTRIBUTIONS

TRANSPORT (PEDESTRIAN PATHS & BIKEWAYS) TRUNK INFRASTRUCTURE

PROJECT NUMBER:
0509-1

GRID: **10**

DRAWING:
MVSC_ICP_TP_010.WOR

LEGEND

PEDESTRIAN PATHS & BIKEWAYS

EXISTING TRUNK INFRASTRUCTURE

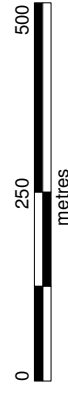
- Asphalt
- Bitumen
- Bitumen + Pavement
- Concrete
- Decomposed Granite
- Earth
- Exposed Aggregate
- Gravel
- Pavers
- Plank & Chain
- Planks
- Sand
- Stenciled Concrete
- Wood
- Woodchip
- Footbridge

FUTURE TRUNK INFRASTRUCTURE

- Asphalt
- Bitumen
- Boardwalk
- Concrete
- Grassed Track
- Gravel
- Paving Blocks
- Plank & Chain
- Turf
- Woodchip

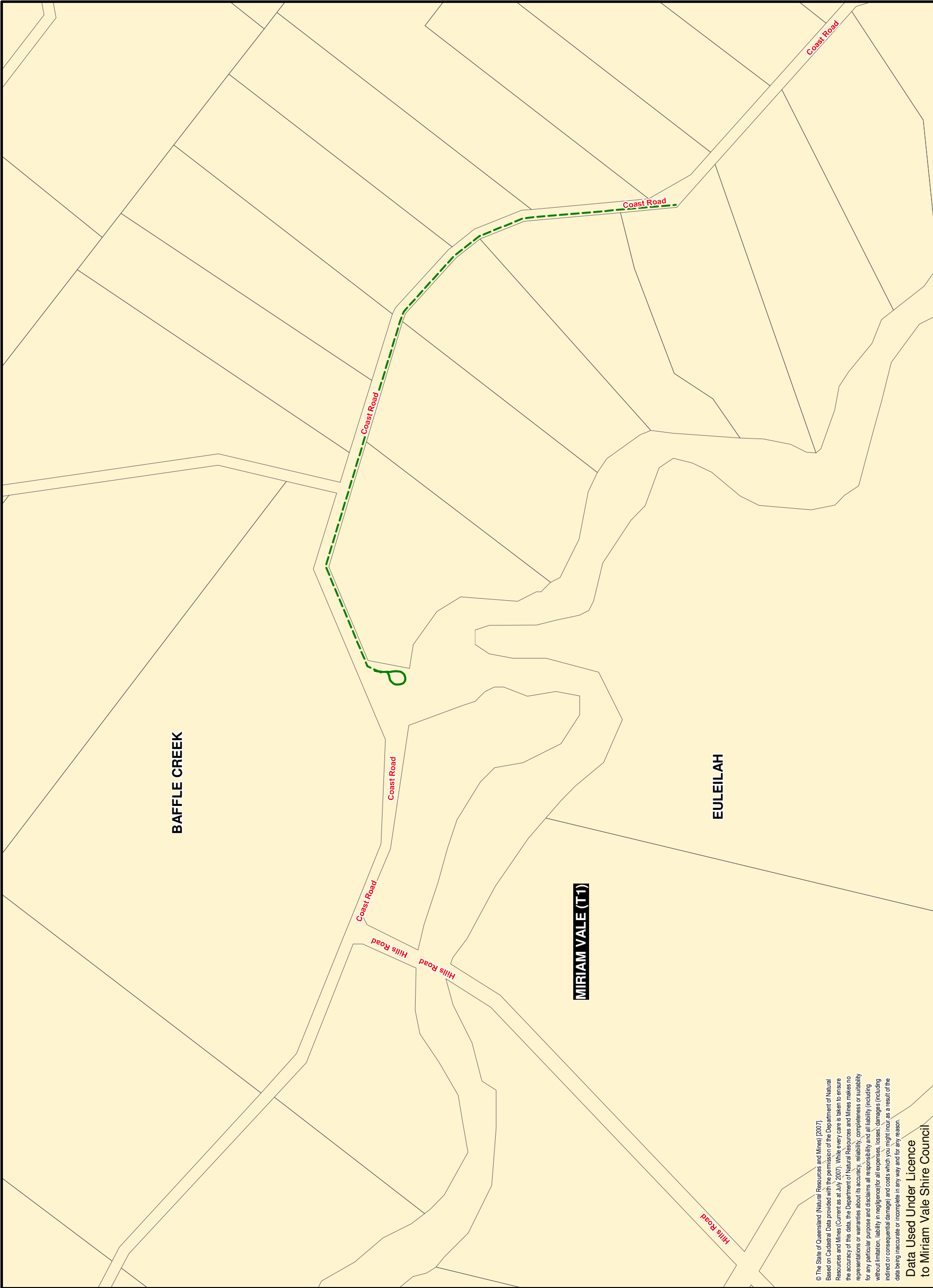
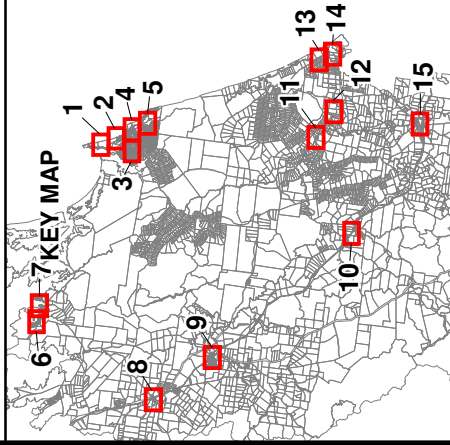
GENERAL

- Property Boundary
- Transport Contributions Catchment



Scale 1 : 10 000 @ A3

Commencement Date
27 February 2009



© The State of Queensland (Natural Resources and Mines) (2007).
Based on Cadastral Data provided with the permission of the Department of Natural Resources and Mines (Current as at July 2007). While every care is taken to ensure the accuracy of this data, the Department of Natural Resources and Mines makes no representations or warranties about its accuracy, reliability, completeness or suitability for any particular purpose and disclaims all responsibility and all liability (including without limitation, liability in negligence) for all expenses, losses, damages (including indirect or consequential damage) and costs which you might incur as a result of the data being inaccurate or incomplete in any way and for any reason.

Data Used Under Licence
to Miriam Vale Shire Council

Drawn: C.A.
Checked: D.S.
Approved: N.C.
Date: 21/10/2008
Rev: 1.1



MIRIAM VALE SHIRE COUNCIL
PLANNING SCHEME POLICY - INFRASTRUCTURE CONTRIBUTIONS
TRANSPORT (PEDESTRIAN PATHS & BIKEWAYS) TRUNK INFRASTRUCTURE

PROJECT NUMBER:
0509-1
GRID: **11**
DRAWING:
MVSC_ICP_TP_011.WOR

LEGEND

PEDESTRIAN PATHS & BIKEWAYS

EXISTING TRUNK INFRASTRUCTURE

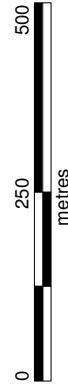
- Asphalt
- Bitumen
- Bitumen + Pavement
- Concrete
- Decomposed Granite
- Earth
- Exposed Aggregate
- Gravel
- Pavers
- Plank & Chain
- Planks
- Sand
- Stenciled Concrete
- Wood
- Woodchip
- Footbridge

FUTURE TRUNK INFRASTRUCTURE

- Asphalt
- Bitumen
- Boardwalk
- Concrete
- Grassed Track
- Gravel
- Paving Blocks
- Plank & Chain
- Turf
- Woodchip

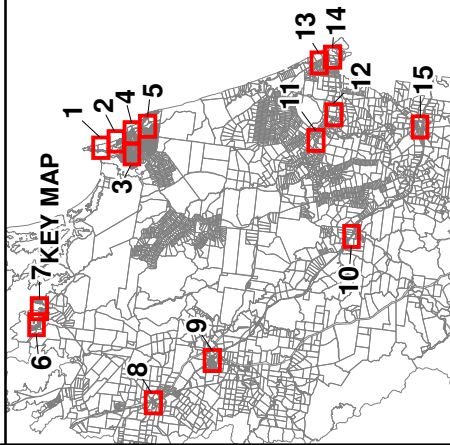
GENERAL

- Property Boundary
- Transport Contributions
- Catchment



Scale 1 : 10 000 @ A3

Commencement Date
27 February 2009



© The State of Queensland (Natural Resources and Mines) (2007).
Based on Cadastral Data provided with the permission of the Department of Natural Resources and Mines (Current as at July 2007). While every care is taken to ensure the accuracy of this data, the Department of Natural Resources and Mines makes no representations or warranties about its accuracy, reliability, completeness or suitability for any particular purpose and disclaims all responsibility and all liability (including without limitation, liability in negligence) for all expenses, losses, damages (including indirect or consequential damage) and costs which you might incur as a result of the data being inaccurate or incomplete in any way and for any reason.

Data Used Under Licence
to Miriam Vale Shire Council

ROSEDALE

Drawn: C.A.
Checked: D.S.
Approved: N.C.
Date: 21/10/2008
Rev: 1.1



MIRIAM VALE SHIRE COUNCIL
PLANNING SCHEME POLICY - INFRASTRUCTURE CONTRIBUTIONS
TRANSPORT (PEDESTRIAN PATHS & BIKEWAYS) TRUNK INFRASTRUCTURE

PROJECT NUMBER:
0509-1
GRID: **12**
DRAWING:
MVSC_ICP_TP_012.WOR

LEGEND

PEDESTRIAN PATHS & BIKEWAYS

EXISTING TRUNK INFRASTRUCTURE

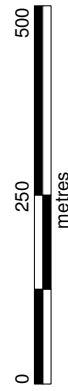
- Asphalt
- Bitumen
- Bitumen + Pavement
- Concrete
- Decomposed Granite
- Earth
- Exposed Aggregate
- Gravel
- Pavers
- Plank & Chain
- Planks
- Sand
- Stenciled Concrete
- Wood
- Woodchip
- Footbridge

FUTURE TRUNK INFRASTRUCTURE

- Asphalt
- Bitumen
- Boardwalk
- Concrete
- Grassed Track
- Gravel
- Paving Blocks
- Plank & Chain
- Turf
- Woodchip

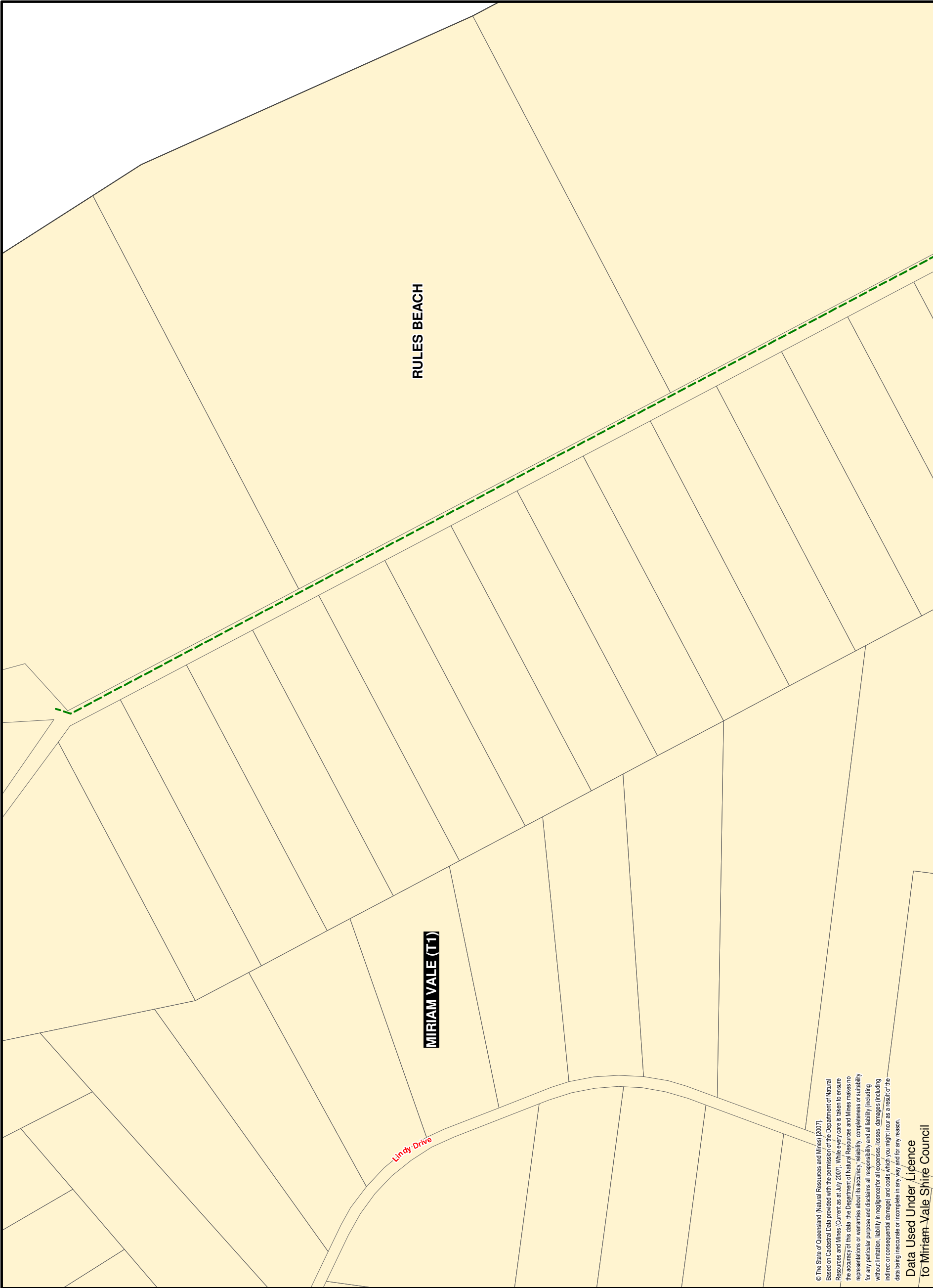
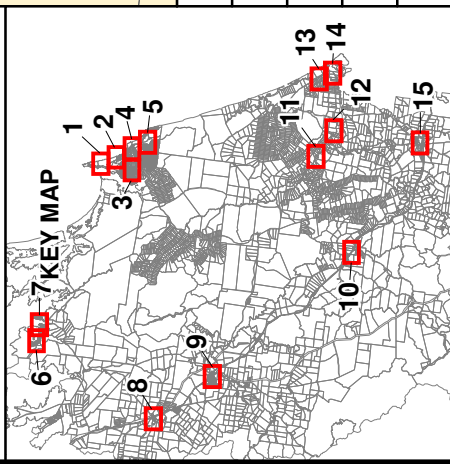
GENERAL

- Property Boundary
- Transport Contributions
- Catchment



Scale 1 : 10 000 @ A3

Commencement Date
27 February 2009



© The State of Queensland (Natural Resources and Mines) (2007).
Based on Cadastral Data provided with the permission of the Department of Natural Resources and Mines (Current as at July 2007). While every care is taken to ensure the accuracy of this data, the Department of Natural Resources and Mines makes no representations or warranties about its accuracy, reliability, completeness or suitability for any particular purpose and disclaims all responsibility and all liability (including without limitation, liability in negligence) for all expenses, losses, damages (including indirect or consequential damage) and costs which you might incur as a result of the data being inaccurate or incomplete in any way and for any reason.

Data Used Under Licence
to Miriam Vale Shire Council

Drawn: C.A.

Checked: D.S.

Approved: N.C.

Date: 21/10/2008

Rev: 1.1



MIRIAM VALE SHIRE COUNCIL

PLANNING SCHEME POLICY - INFRASTRUCTURE CONTRIBUTIONS

TRANSPORT (PEDESTRIAN PATHS & BIKEWAYS) TRUNK INFRASTRUCTURE

PROJECT NUMBER:
0509-1

GRID: **13**

DRAWING:
MVSC_ICP_TP_013.WOR

LEGEND

PEDESTRIAN PATHS & BIKEWAYS

EXISTING TRUNK INFRASTRUCTURE

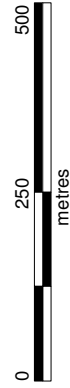
- Asphalt
- Bitumen
- Bitumen + Pavement
- Concrete
- Decomposed Granite
- Earth
- Exposed Aggregate
- Gravel
- Pavers
- Plank & Chain
- Planks
- Sand
- Stenciled Concrete
- Wood
- Woodchip
- Footbridge

FUTURE TRUNK INFRASTRUCTURE

- Asphalt
- Bitumen
- Boardwalk
- Concrete
- Grassed Track
- Gravel
- Paving Blocks
- Plank & Chain
- Turf
- Woodchip

GENERAL

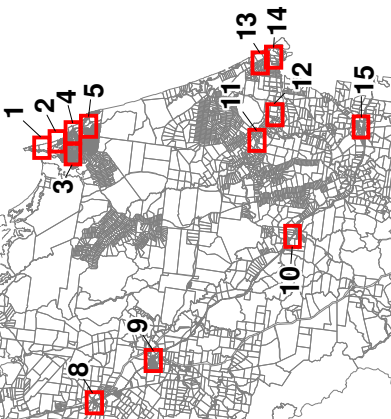
- Property Boundary
- Transport Contributions
- Catchment



Scale 1 : 10 000 @ A3

Commencement Date
27 February 2009

7 KEY MAP



© The State of Queensland (Natural Resources and Mines) (2007).
Based on Cadastral Data provided with the permission of the Department of Natural Resources and Mines (Current as at July 2007). While every care is taken to ensure the accuracy of this data, the Department of Natural Resources and Mines makes no representations or warranties about its accuracy, reliability, completeness or suitability for any particular purpose and disclaims all responsibility and all liability (including without limitation, liability in negligence) for all expenses, losses, damages (including indirect or consequential damage) and costs which you might incur as a result of the data being inaccurate or incomplete in any way and for any reason.

Data Used Under Licence
to Miriam Vale Shire Council

Drawn: C.A.

Checked: D.S.

Approved: N.C.

Date: 21/10/2008

Rev: 1.1



MIRIAM VALE SHIRE COUNCIL

PLANNING SCHEME POLICY - INFRASTRUCTURE CONTRIBUTIONS

TRANSPORT (PEDESTRIAN PATHS & BIKEWAYS) TRUNK INFRASTRUCTURE

PROJECT NUMBER:
0509-1

GRID:
14

DRAWING:
MVSC_ICP_TP_014.WOR

LEGEND

PEDESTRIAN PATHS & BIKEWAYS

EXISTING TRUNK INFRASTRUCTURE

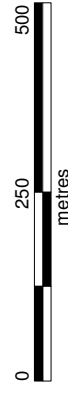
- Asphalt
- Bitumen
- Bitumen + Pavement
- Concrete
- Decomposed Granite
- Earth
- Exposed Aggregate
- Gravel
- Pavers
- Plank & Chain
- Planks
- Sand
- Stenciled Concrete
- Wood
- Woodchip

FUTURE TRUNK INFRASTRUCTURE

- Footbridge
- Asphalt
- Bitumen
- Boardwalk
- Concrete
- Grassed Track
- Gravel
- Paving Blocks
- Plank & Chain
- Turf
- Woodchip

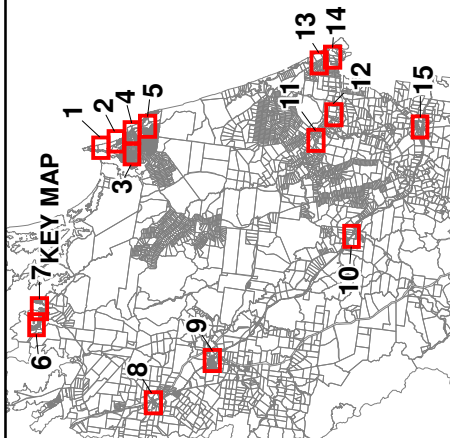
GENERAL

- Property Boundary
- Transport Contributions Catchment



Scale 1 : 10 000 @ A3

Commencement Date
27 February 2009



© The State of Queensland (Natural Resources and Mines) (2007).
Based on Cadastral Data provided with the permission of the Department of Natural Resources and Mines (Current as at July 2007). While every care is taken to ensure the accuracy of this data, the Department of Natural Resources and Mines makes no representations or warranties about its accuracy, reliability, completeness or suitability for any particular purpose and disclaims all responsibility and all liability (including without limitation, liability in negligence) for all expenses, losses, damages (including indirect or consequential damage) and costs which you might incur as a result of the data being inaccurate or incomplete in any way and for any reason.

Data Used Under Licence
to Miriam Vale Shire Council

Drawn: C.A.
Checked: D.S.
Approved: N.C.
Date: 21/10/2008
Rev: 1.1



MIRIAM VALE SHIRE COUNCIL
PLANNING SCHEME POLICY - INFRASTRUCTURE CONTRIBUTIONS
TRANSPORT (PEDESTRIAN PATHS & BIKEWAYS) TRUNK INFRASTRUCTURE

PROJECT NUMBER:
0509-1
GRID: **15**
DRAWING:
MVSC_ICP_TP_015.WOR