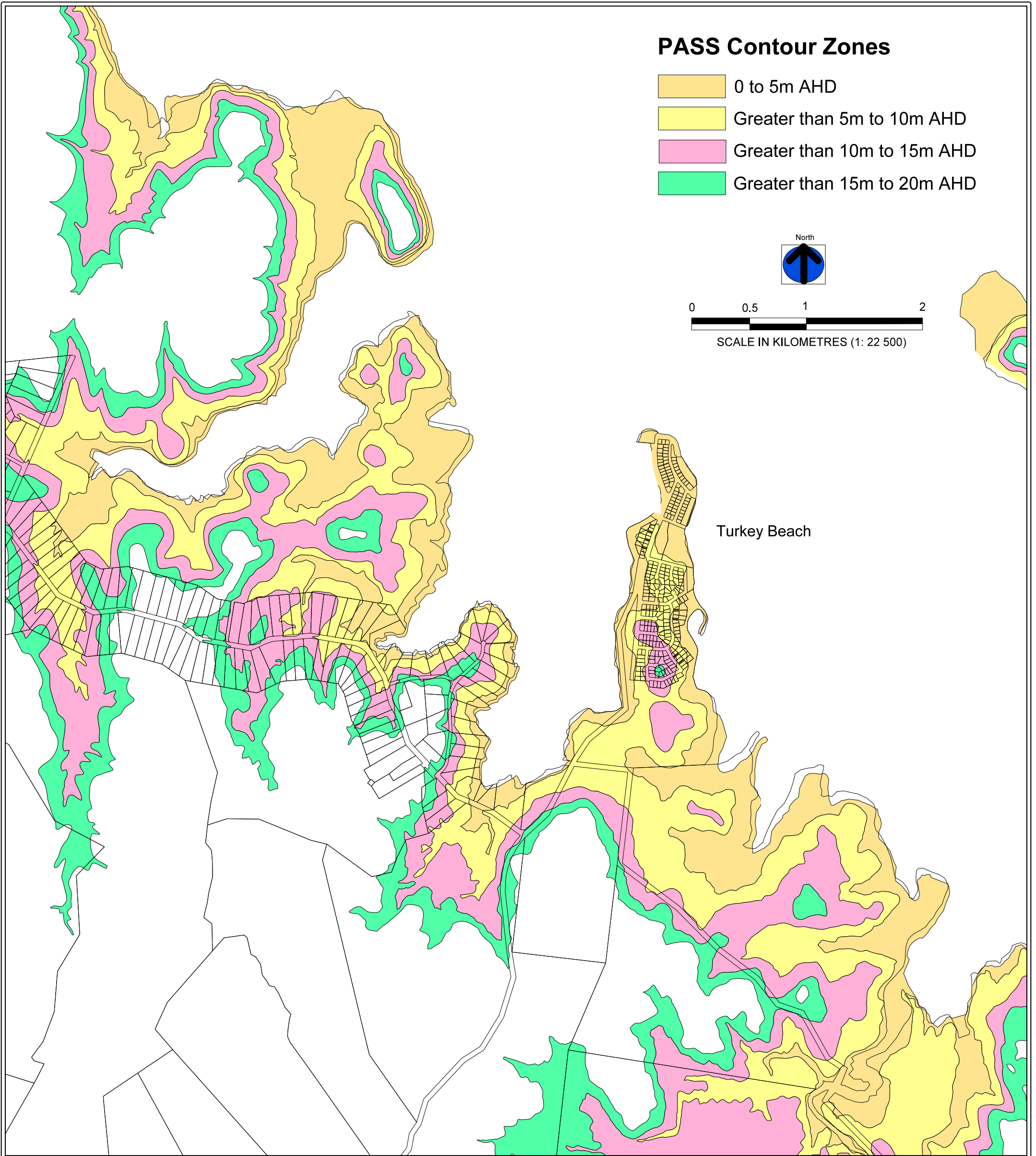


POTENTIAL ACID SULFATE SOILS OVERLAY



Miriam Vale Shire Planning Scheme Map 4.37.3

Commencement Date 27 February 2009'

This information has been prepared for Council's internal purpose and no other purpose. While every care is taken to ensure the accuracy of this data, neither Miriam Vale Shire Council nor the Department of Natural Resources, Mines and Energy makes no representations or warranties about its accuracy, reliability, completeness or suitability for any particular purpose and disclaims all all responsibility and all liability (including without limitation, liability in negligence for all expenses, losses, damages (including indirect or consequential damage) and costs which you might incur as a result of the data being inaccurate or incomplete in any way and for any reason.
© The State of Queensland (Department of Natural Resources, Mines and Energy) 2004
Based on Cadastral Data provided with the permission of the Department of Natural Resources, Mines and Energy: May 2004