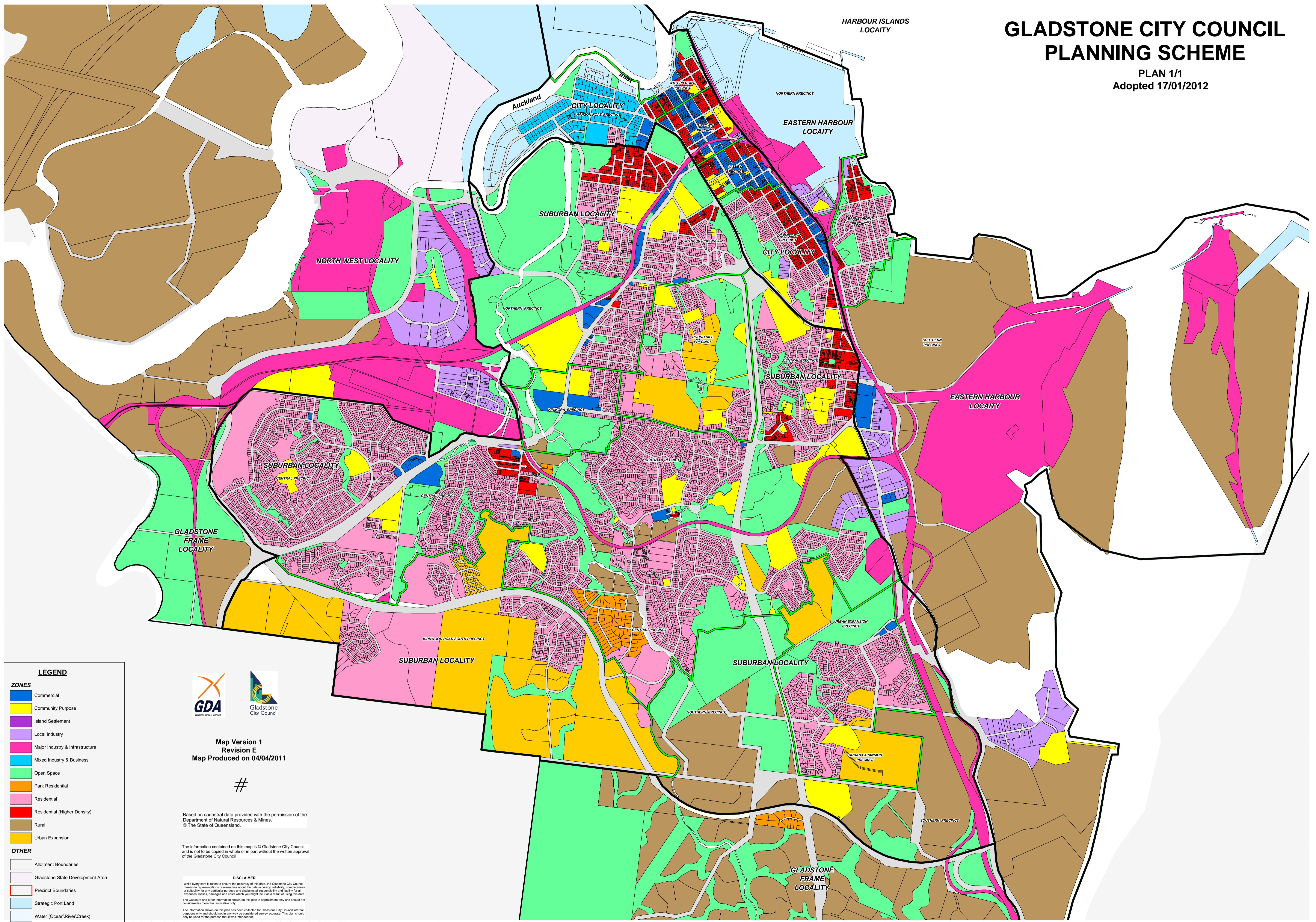


GLADSTONE CITY COUNCIL PLANNING SCHEME

PLAN 1/1
Adopted 17/01/2012



LEGEND

ZONES

- Commercial
- Community Purpose
- Island Settlement
- Local Industry
- Major Industry & Infrastructure
- Mixed Industry & Business
- Open Space
- Park Residential
- Residential
- Residential (Higher Density)
- Rural
- Urban Expansion

OTHER

- Allotment Boundaries
- Gladstone State Development Area
- Precinct Boundaries
- Strategic Port Land
- Water (Ocean/River/Creek)



Map Version 1
Revision E
Map Produced on 04/04/2011

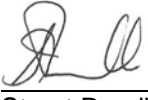
#

Based on cadastral data provided with the permission of the Department of Natural Resources & Mines.
© The State of Queensland.

The information contained on this map is © Gladstone City Council and is not to be copied in whole or in part without the written approval of the Gladstone City Council

DISCLAIMER
While every care is taken to ensure the accuracy of this data, the Gladstone City Council makes no representations or warranties about the data accuracy, reliability, completeness or suitability for any particular purpose and disclaims all responsibility and liability for all expenses, losses, damages and costs which you might incur as a result of using this data.
The Cadastral and other information shown on this plan is approximate only and should not be considered more than indicative only.
The information shown on this plan has been collected for Gladstone City Council internal purposes only and should not in any way be considered survey accurate. This plan should only be used for the purpose that it was intended for.

This is to certify that this is a true and correct copy of the Gladstone Regional Council's (former Gladstone City area) Gladstone City Council Planning Scheme Map 1/1.



Stuart Randle
Chief Executive Officer

Adopted: 17 January 2012
Took Effect: 23 January 2012