

Gladstone Regional Council Animal Management (Amendment) Subordinate Local Law (No. 1) 2023

Contents

Part 1	Preliminary.....	1
	1 Short title	1
	2 Subordinate local law amended.....	1
Part 2	Amendments to subordinate local law.....	1
	3 Amendment of sch1 (Prohibition on keeping animals)	1
	4 Amendment of sch4 (Minimum standards for keeping animals generally).....	1
	5 Amendment of sch5 (Minimum standards for keeping particular animals).....	1
	6 Amendment of sch6 (Prohibition of animals in public places)	2
	7 Amendment of sch7 (Dog off-leash areas).....	5
	8 Amendment of sch8 (Requirements for proper enclosures for animals)	10
	9 Amendment of sch13 (Dictionary)	11

Part 1 Preliminary

1 Short title

This subordinate local law may be cited as *Animal Management (Amendment) Subordinate Local Law (No. 1) 2023*.

2 Subordinate local law amended

This subordinate local law amends *Subordinate Local Law No. 2 (Animal Management) 2011*.

Part 2 Amendments to subordinate local law

3 Amendment of sch1 (Prohibition on keeping animals)

- (1) Schedule 1, item 9, column 1, after ‘Bees’—

insert—

‘other than native stingless bees’.

- (2) Schedule 1, item 10, column 2—

omit, insert—

‘(1) A racing pigeon on an allotment with an area less than 1,000m².

(2) More than 20 racing pigeons on an allotment if the allotment is in a designated town area and has an area of 1,000m² or more.’.

4 Amendment of sch4 (Minimum standards for keeping animals generally)

- (1) Schedule 4, section 1(h), ‘.’—

omit, insert—

‘; and’.

- (2) Schedule 4, after section 1(h)—

insert—

‘(i) if the animal is a cat or a dog and the animal is required to be implanted with a PPID — ensure that the cat or dog is implanted with a PPID as required by section 14 of the Animal Management Act.’.

5 Amendment of sch5 (Minimum standards for keeping particular animals)

- (1) Schedule 5, item 1, column 2, paragraph (b)—

omit, insert—

‘(b) unless the greyhound is a decommissioned greyhound — not bring into, or permit the greyhound to be in, a public place unless the greyhound is muzzled so as to prevent the greyhound from biting.’.

- (2) Schedule 5, item 4, column 1, after ‘Bees’—

insert—

‘other than native stingless bees’.

- (3) Schedule 5, item 6, column 2, paragraph (b)—

omit, insert—

‘(b) to the extent that the pigeons kept on the premises—

(i) are not racing pigeons — the pigeons are contained within an enclosed cage or aviary;

(ii) are racing pigeons — the racing pigeons are contained within an enclosed cage or aviary unless the racing pigeons are released for the purpose of participating in a race or exercising prior to participation in a race; and’.

- (4) Schedule 5, item 6, column 2, after paragraph (d)(ii)—

insert—

‘(iii) positioned on the premises at the most suitable, and furthest most, point from any residence on adjoining premises; and’.

6 Amendment of sch6 (Prohibition of animals in public places)

- (1) Schedule 6, item 2, column 1, after ‘G14221’—

insert—

‘and Lot 6 on Plan G143257’.

- (2) Schedule 6, item 10, column 1, ‘and Workmans’—

omit, insert—

‘to Red Rock’.

- (3) Schedule 6, item 10, column 2, from ‘, but’ to ‘year’—

omit.

- (4) Schedule 6, after item 10 —

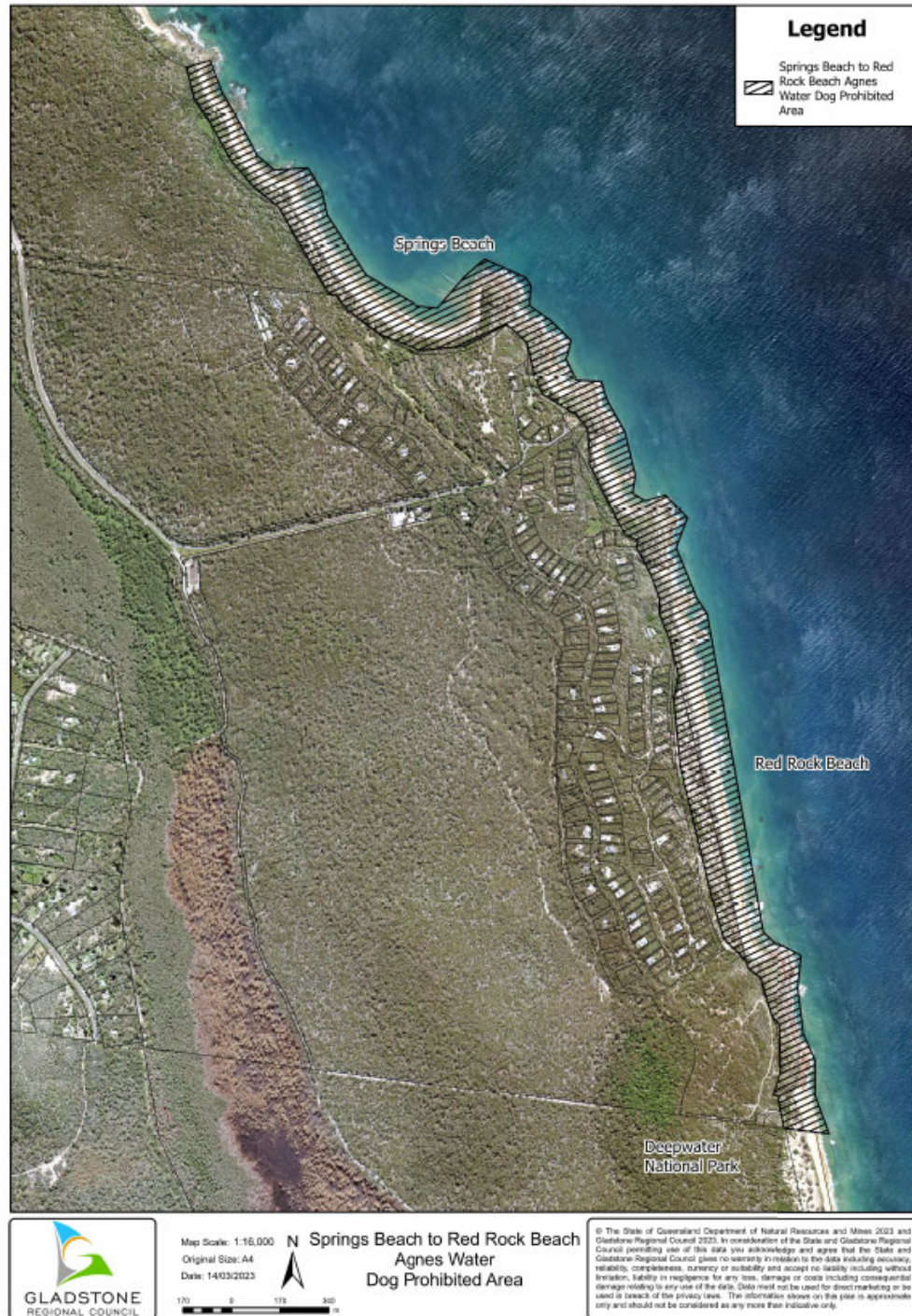
insert—

‘

	Column 1 Public place	Column 2 Species or breed of animals prohibited
11	The area of foreshore shown hatched in black on a map which forms part of this schedule 6 and is identified as Wild Cattle Island – Dog Prohibited Area	Dogs

- (5) Schedule 6, map titled ‘Springs Beach and Workmans Beach Agnes Water – Dogs Prohibited Area’ —

omit, insert—



(6) Schedule 6—

insert—



7 Amendment of sch7 (Dog off-leash areas)

(1) Schedule 7, item 1—

omit, insert—

‘1. The area shown hatched in black and bounded by a bold black line on the map titled “Webb Park Dog Off Leash Area” which forms part of this schedule 7 at Webb Park, Palm Drive, Gladstone being part of the land described as Lot 381 on Plan CP897417 and Lot 361 on Plan CTN2174.’.

(2) Schedule 7, item 4—

omit, insert—

‘4. The foreshore area shown hatched in black and bounded by a bold black line on the map titled “Canoe Point Dog Off Leash Area” which forms part of this schedule 7 at Canoe Point, Canoe Point Road, Tannum Sands, adjacent to the area described as Lot 41 on Plan CTN1860, Parish of Inveragh.’.

(3) Schedule 7, item 7—

omit, insert—

‘7. The area shown hatched in black and bounded by a bold black line on the map titled “SES Grounds, Captain Cook Drive, Agnes Water Dog Off Leash Area” which forms part of this schedule at SES Grounds, Captain Cook Drive, Seventeen Seventy being part of the land described as Lot 17 on SP178795, but only during the months from August in a year to January in the following year.’.

(4) Schedule 7, item 8—

omit, insert—

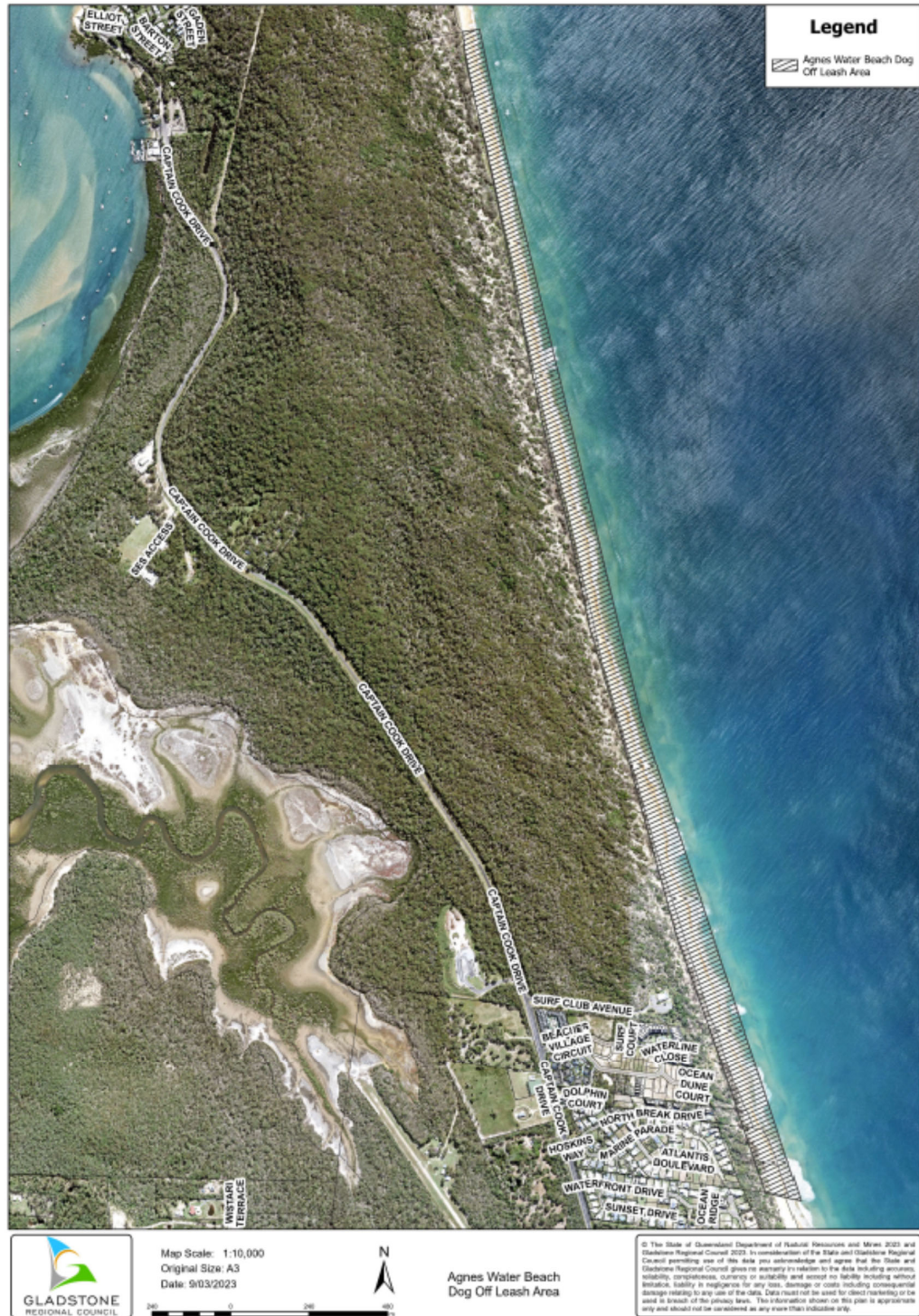
‘8. The area of bathing reserve and foreshore shown hatched in black and bounded by a bold black line on the map titled “Agnes Water Beach – Dog Off Leash Area” which forms part of this schedule 7 but only north of the Atlantis Boulevard beach access and only to the south of the southern boundary of Lot 508 on Plan NPW556 (Joseph Banks Conservation Park).’.

(5) Schedule 7, after item 12—

insert—

‘13. The area of foreshore shown hatched in black and bounded by a bold black line on the map titled “Wild Cattle Island – Dog Off Leash Area” which forms part of this schedule 7 at the township of Bangalee on Wild Cattle Island.’.

- (6) Schedule 7, map titled “Agnes Water Beach – Dog Off Leash Area”—
omit, insert—

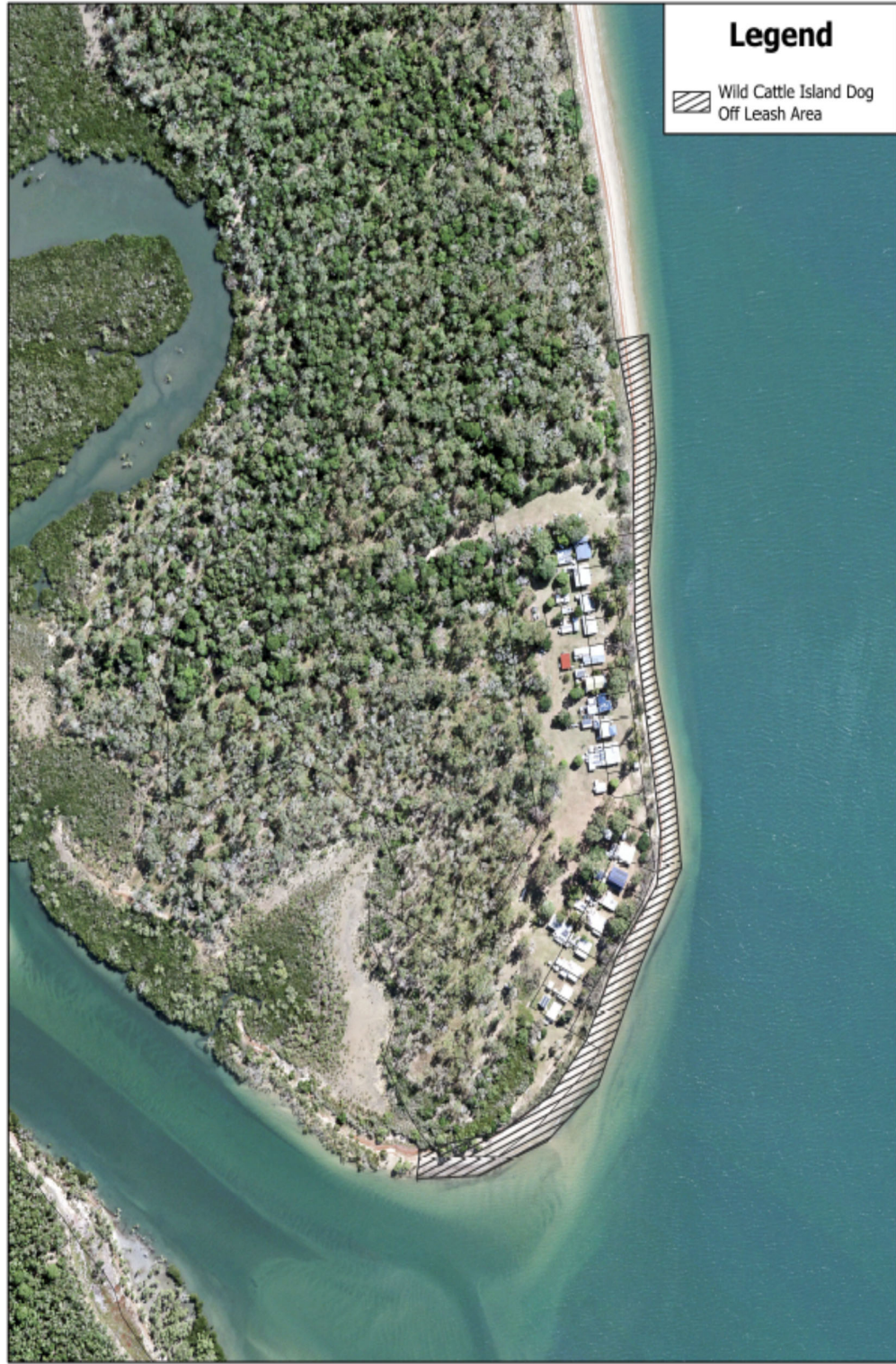


(7) Schedule 7—

insert—







- (a) is appropriately sized so as to be capable of effectively and comfortably housing the animal;
 - (b) where the animal is a declared dangerous dog or a declared menacing dog—has an area of not less than 10m².’.
- (2) Schedule 8, item 1, column 2, subsection (3)(e)—
omit, insert—
 - ‘(e) of which all gates are kept closed and latched except when in immediate use by a person entering or leaving the land on which the animal is kept; and
 - (f) of which all gates are self-latching unless the animal kept on the land is of a species or breed as follows—
 - (i) bee;
 - (ii) bird;
 - (iii) poultry;
 - (iv) stock.’.
- (3) Schedule 8, item 1, column 2, after subsection (3)—
insert—
 - ‘(4) For the avoidance of doubt, this item 1 does not apply to the stock of a primary producer grazing—
 - (a) in a rural area (other than a designated town area); and
 - (b) on an unfenced road or a reserve for travelling stock purposes.’.

9 Amendment of sch13 (Dictionary)

- (1) Schedule 13, definition ***bathing reserve***, ‘section 26 of the *Local Government (Operations) Regulation 2010*’—
omit, insert—
‘the *Local Government Regulation 2012*’.
- (2) Schedule 13, definition ***cattery***, ‘standard planning scheme provisions’—
omit, insert—
‘*Planning Regulation 2017*’.
- (3) Schedule 13, definition ***designated town area***—
omit, insert—
‘***designated town area*** means an area included in a zone in the planning scheme of the local government other than the rural zone in the planning scheme of the local government.’.
- (4) Schedule 13, definition ***foreshore***, ‘section 25 of the *Local Government (Operations) Regulation 2010*’—
omit, insert—
‘the *Local Government Regulation 2012*’.

- (5) Schedule 13, definition **kennel**, ‘standard planning scheme provisions’—
omit, insert—
‘Planning Regulation 2017’.
- (6) Schedule 13, definition **multi-residential premises**—
omit, insert—
‘multi-residential premises means each of—
- (a) a residence which forms part of a group of 2 or more residences in circumstances where 2 or more of the residences of the group—
- (i) are directly adjacent to each other and share—
- (A) a common wall; or
- (B) a ceiling in circumstances where 1 residence is directly under the floor of another residence; or
- (ii) are adjacent to each other and share common facilities, for example, community facilities for car parking, entertainment, dining or recreation; and
- (b) a residence situated on a lot which forms part of a community titles scheme as defined in the *Body Corporate and Community Management Act 1997*.
- Examples of multi-residential premises—*
Flats, boarding houses, tenement buildings, home units, townhouses and duplexes.’.
- (7) Schedule 13, definition **sewerage system**, ‘*Plumbing and Drainage Act 2002*’—
omit, insert—
‘Plumbing and Drainage Act 2018’.
- (8) Schedule 13, definition **standard planning scheme provisions** —
omit.
- (9) Schedule 13, definition **vermin**, ‘reptiles,’—
omit.
- (10) Schedule 13—
insert—
‘declared dangerous dog has the meaning given in the Animal Management Act.
declared menacing dog has the meaning given in the Animal Management Act.
decommissioned greyhound has the meaning given in the Animal Management Act, section 197(3).
PPID has the meaning given in the Animal Management Act.
primary producer has the meaning given in the Animal Management Act.
racing pigeon means a pigeon which is specially trained to participate in the sport of pigeon racing, the release of specially trained homing pigeons, which return to their homes over a carefully measured distance.’.

