

# Gladstone Regional Council Parking (Amendment) Subordinate Local Law (No. 1) 2022

## Contents

---

<b>Part 1</b>	<b>Preliminary .....</b>	<b>1</b>
1	Short title.....	1
2	Subordinate local law amended .....	1
<b>Part 2</b>	<b>Amendment of subordinate local law .....</b>	<b>1</b>
3	Amendment of sch2 (Declaration of off-street regulated parking areas).....	1
4	Amendment of sch3 (Infringement notice penalty amounts for certain minor traffic offences) .....	5

## Part 1 Preliminary

### 1 Short title

This subordinate local law may be cited as *Parking (Amendment) Subordinate Local Law (No. 1) 2022*.

### 2 Subordinate local law amended

This subordinate local law amends *Subordinate Local Law No. 5 (Parking) 2011*.

## Part 2 Amendment of subordinate local law

### 3 Amendment of sch2 (Declaration of off-street regulated parking areas)

(1) Schedule 2, section 6—

*omit, insert—*

‘6. Gladstone Airport off-street regulated parking area being the area cross hatched in black on the plan in this schedule 2 with the boundaries of the off-street regulated parking area being the area indicated by a black line circumscribing the cross hatched area on the map.



(2) Schedule 2, after section 6—

*insert—*



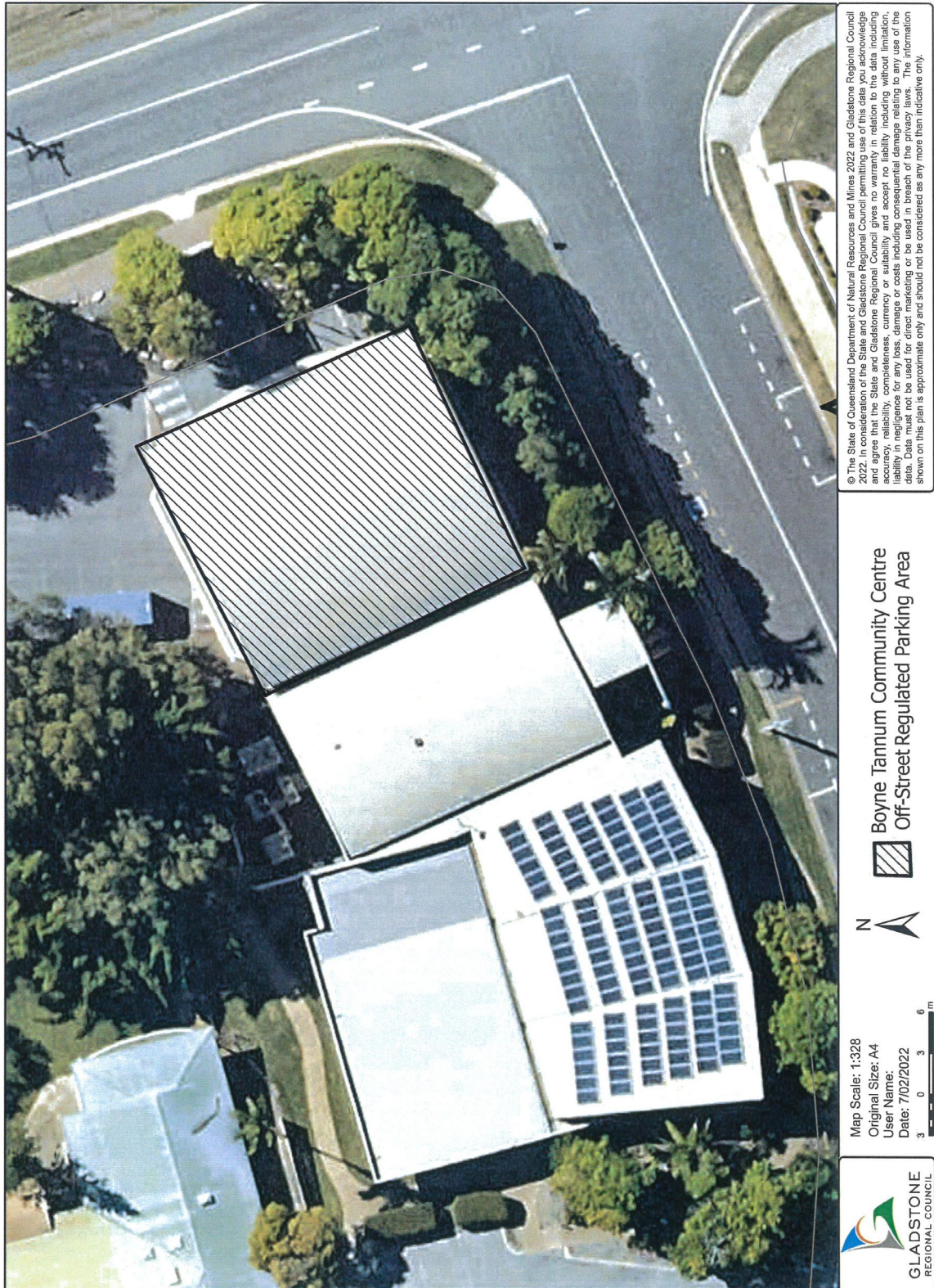
- ‘6A. Philip Street Communities and Families Precinct off-street regulated parking area being the area of Lot 1 on SP312056 hatched in black on the plan in this schedule 2 with the boundaries of the off-street regulated parking area being the area indicated by a black line circumscribing the hatched area on the map.



- 6B. Boyne Tannum Community Centre off-street regulated parking area being the ground level car parking area of Lot 16 on Plan B87111 located underneath that part of the Boyne Tannum Community Centre building hatched in black



on the plan in this schedule 2 with the boundaries of the off-street regulated parking area being the area indicated by a black line circumscribing the hatched area on the map.



6C. Marley Brown Oval off-street regulated parking area being the area of Lot 22 on Plan CTN1622 hatched in black on the plan in this schedule 2 with the boundaries of the off-street regulated parking area being the area indicated by



a black line circumscribing the hatched area on the map.



- 6D. 20 Bramston Street, Gladstone described as Lot 8 on SP116455, county of Clinton, parish of Gladstone.
- 6E. 37 Tank Street, Gladstone described as Lot 1 on Registered Plan 618718, county of Clinton, parish of Gladstone.
- (3) Schedule 2, sections 6A, 6B, 6C, 6D, 6E and 7—  
*renumber* as sections 7, 8, 9, 10, 11 and 12.

**4 Amendment of sch3 (Infringement notice penalty amounts for certain minor traffic offences)**

- (1) Schedule 3, *Transport Operations (Road Use Management — Road Rules) Regulation 2009* provision, section 167, Column 2, ‘0.5 penalty units’—  
 omit, insert—  
 ‘1 penalty unit’.
- (2) Schedule 3, *Transport Operations (Road Use Management — Road Rules) Regulation 2009* provision, section 169, Column 2, ‘0.5 penalty units’—  
 omit, insert—  
 ‘1 penalty unit’.
- (3) Schedule 3, *Transport Operations (Road Use Management — Road Rules) Regulation 2009* provision, section 203(1), Column 2, ‘1 penalty unit’—  
 omit, insert—  
 ‘2 penalty units’.
- (4) Schedule 3, after *Transport Operations (Road Use Management — Road Rules) Regulation 2009* provision, section 167—  
 insert—  
 ‘

168	Stopping on a length of road or in an area to which a no parking sign applies	1 penalty unit
-----	---	----------------

- (5) Schedule 3, after *Transport Operations (Road Use Management — Road Rules) Regulation 2009*, provision, section 179(2)(b)—  
 insert—  
 ‘

179(2A)(a)	Staying continuously for longer than 20 minutes in a loading zone to drop off or pick up goods	1 penalty unit
179(2A)(b)	Staying continuously for longer than permitted by a sign in a loading zone to drop off or pick up goods	1 penalty unit
179(2B)(a)	Staying continuously for longer than 2 minutes in a loading zone to drop off or pick up passengers	1 penalty unit
179(2B)(b)	Staying continuously for longer than 5 minutes in a loading zone to drop off or pick up a person with a disability	1 penalty unit

- (6) Schedule 3, after *Transport Operations (Road Use Management — Road Rules) Regulation 2009*, provision, section 185(1)—  
 insert—

‘

189	Double parking a vehicle on a road	1 penalty unit
-----	------------------------------------	----------------

’

- (7) Schedule 3, after *Transport Operations (Road Use Management — Road Rules) Regulation 2009*, provision, section 197(1)—  
*insert—*
- ‘

197(1A)	Stopping on a painted island	0.5 penalty units
197(1B)	Stopping on a traffic island	0.5 penalty units

’

This and the preceding 6 pages bearing my initials is a certified copy of *Parking (Amendment) Subordinate Local Law (No. 1) 2022* made in accordance with the provisions of the *Local Government Act 2009* by Gladstone Regional Council by resolution dated the 19th day of July 2022.

.....  
Chief Executive Officer