

# I-PG GROUP

I-PG (AUST) Pty limited

I-PGH Consolidated Holdings Pty Limited

I-PG T2G Rail Corp Pty Limited

Intercontinental Direct Line Pty Limited

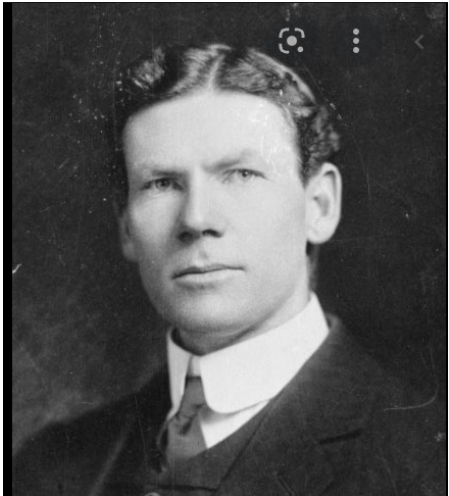
Australian Transport Limited

I-PG Energy H2 Pty Ltd

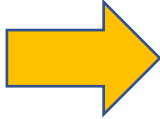
**John Abbott AM**

Chairman – Inter-Port Global Consolidated Holdings Pty Ltd

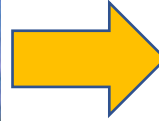
Gladstone Regional Council, November 2021



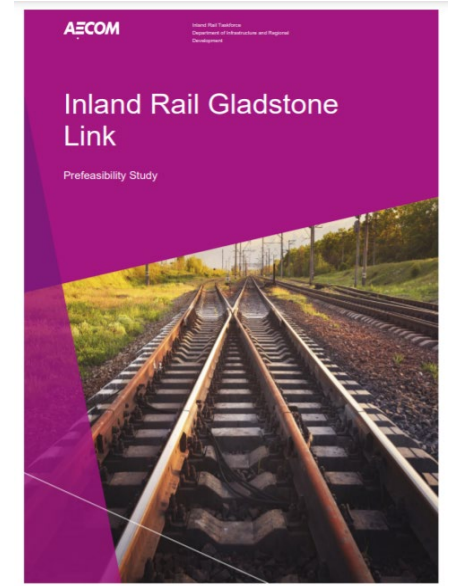
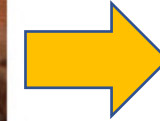
James Hogan MP  
1898 Transcontinental  
rail line terminating in  
Gladstone



**EVERALD COMPTON AO**  
1996  
*Melbourne to Gladstone*



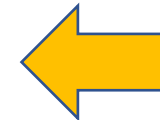
**2015**  
pwc ARTC InlandRail  
The Australian Government's priority freight rail project



**2017**



**TOOWOOMBA TO  
GLADSTONE (T2G)  
INLAND RAIL  
ECONOMIC ANALYSIS**  
CENTRAL QUEENSLAND REGIONAL ORGANISATION OF COUNCILS  
FEBRUARY 2021

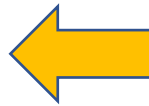


The Senate

Rural and Regional Affairs and  
Transport References Committee

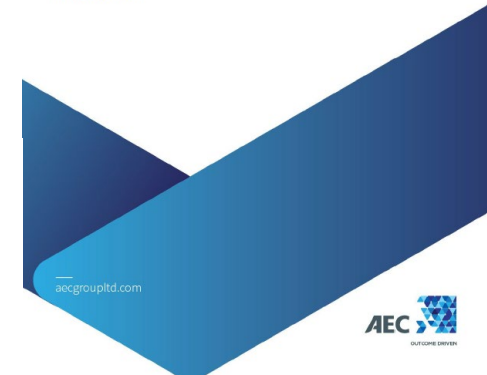
Inland Rail: derailed from the start

**2021**

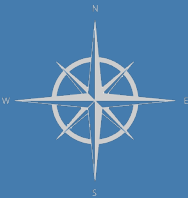


**2021**

**Melbourne to  
Brisbane &  
Gladstone**



# Inland rail link to Brisbane & Gladstone!



Announced by  
DPM Joyce in  
August 2021

Just have to  
resolve the Route  
from the Border







Trieste – a 2 Million TEU terminal

This could be Auckland Point

I-PG



Or a 4 Million ++ TEU port?

# An Emerging Global Freight Network Underpinning Trade Growth & Trans Nation Economic Prosperity

**INDICATIVE SERVICE  
COMMENCEMENT 2025**



# GLADSTONE - MELBOURNE INLAND RAIL

TOTAL CORRIDOR LENGTH 2024KM - AVERAGING 80KPH 25.3 HOURS



## MARITIME MULTIPLE PORTS OF CALL

IN PORT PLUS SEA TIME 188 HRS







Containers won't go on rail if destination is within 300 to 500 km radius

*IPG proposed location for stage 1.  
No formal agreements are in place*



Image © 2021 CNES / Airbus



*IPG proposed location for stage 2.  
No formal agreements are in place*



**I-PG**

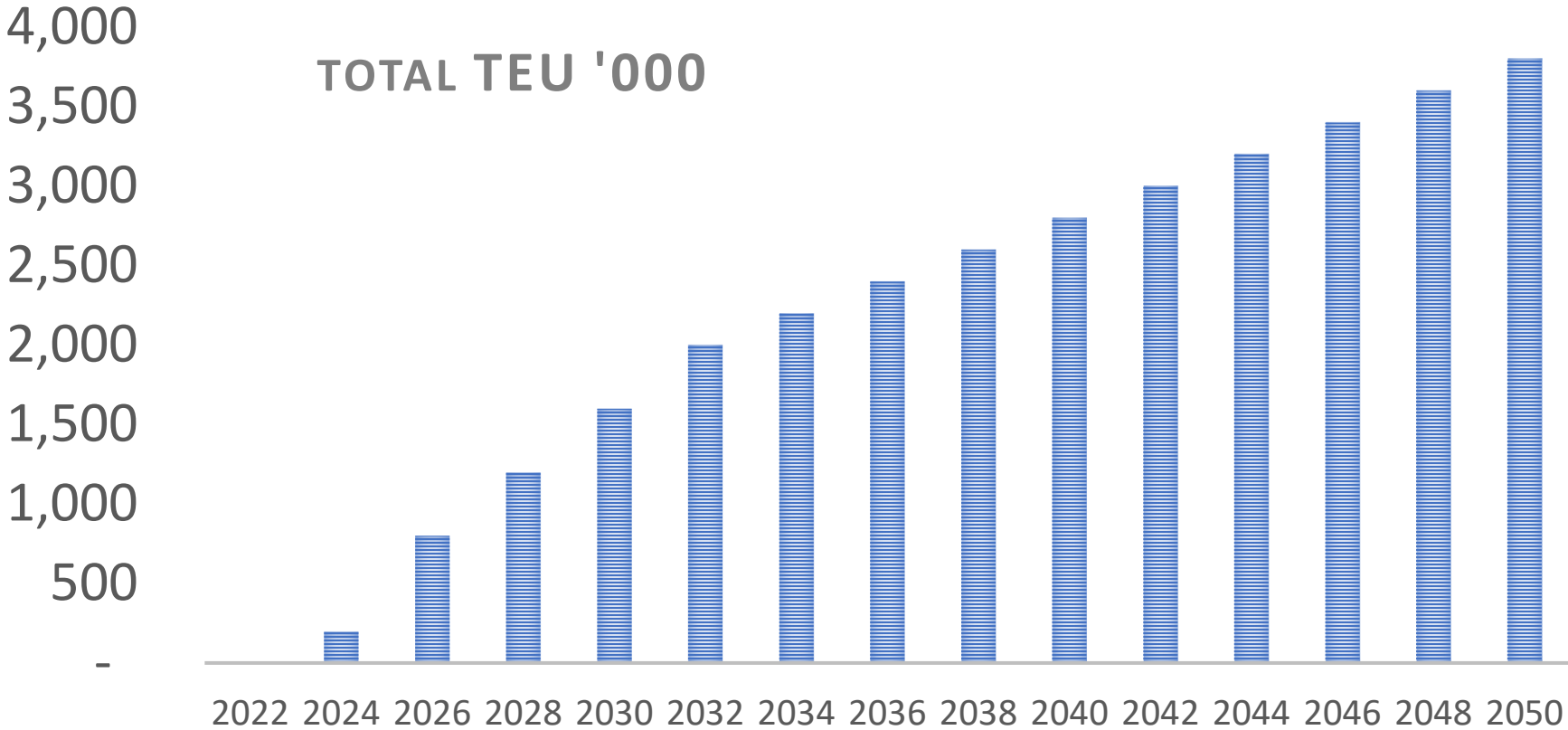
Port	2017-18	2032-33	2050
Brisbane	1.6	3.6	4.8
Sydney (incl Kembla & Newcastle)	2.7	5.1	8.4
Melbourne (incl Geelong)	3.3	6.4	8.9
Gladstone	0.0	0.0	0.0
TOTAL	7.6	15.1	22.1

Port	2017-18	2032-33	2050
Brisbane	1.6	3.0	4.8
Sydney (incl Kembla & Newcastle)	2.6	4.5	5.8
Melbourne (incl Geelong)	3.3	5.6	7.5
Gladstone	0.0	2.0	4.0
TOTAL	7.5	15.1	22.1

An Alternate view of freight growth



PORT OF GLADSTONE

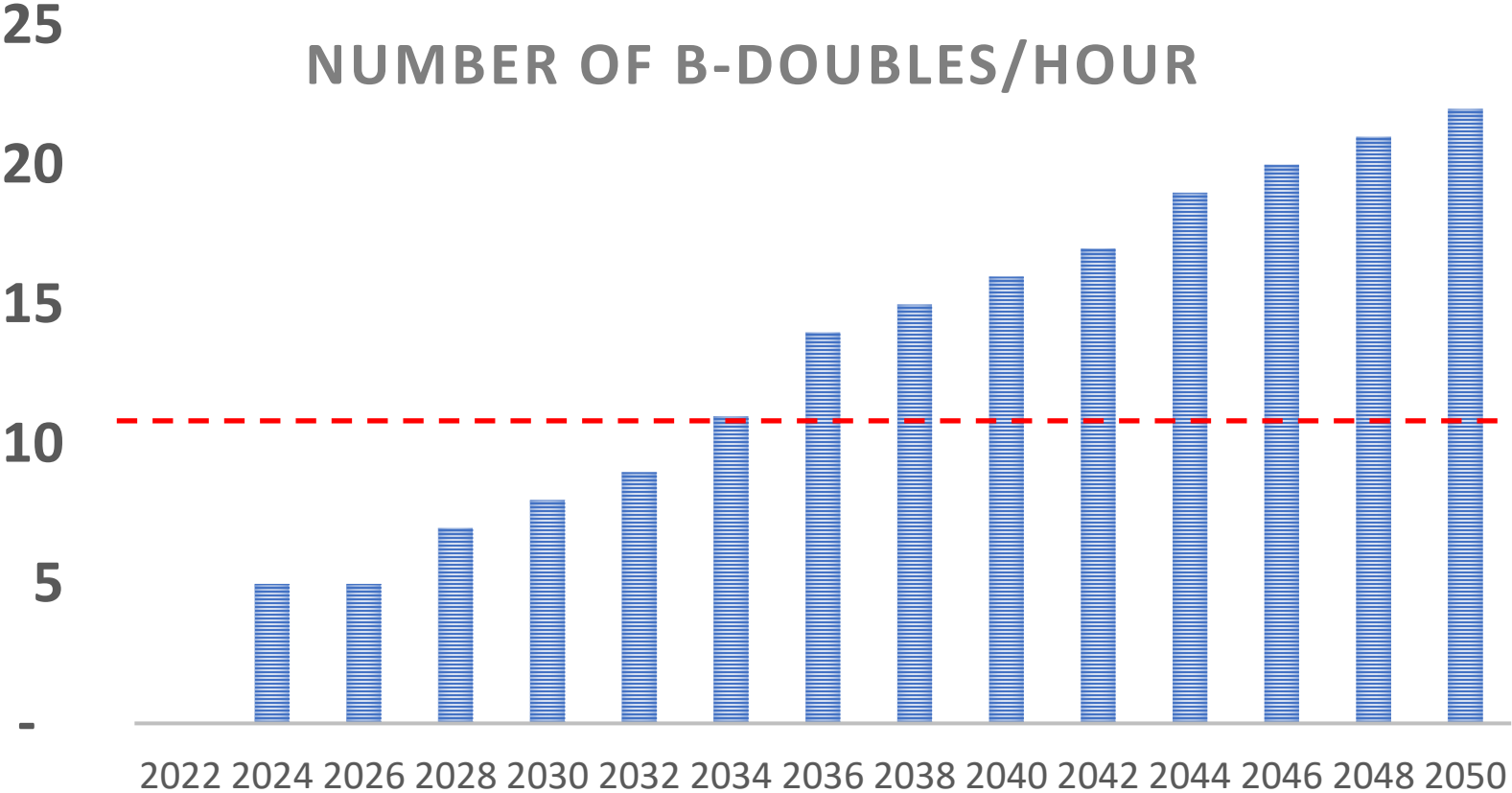


Total Import / Export container traffic planning basis



PORT OF GLADSTONE

NUMBER OF B-DOUBLES/HOUR



Assumptions

- 1. 3 TEU per truck
- 2. 18 hours per day
- 3. 310 days per year

Maximum for Auckland Point =11

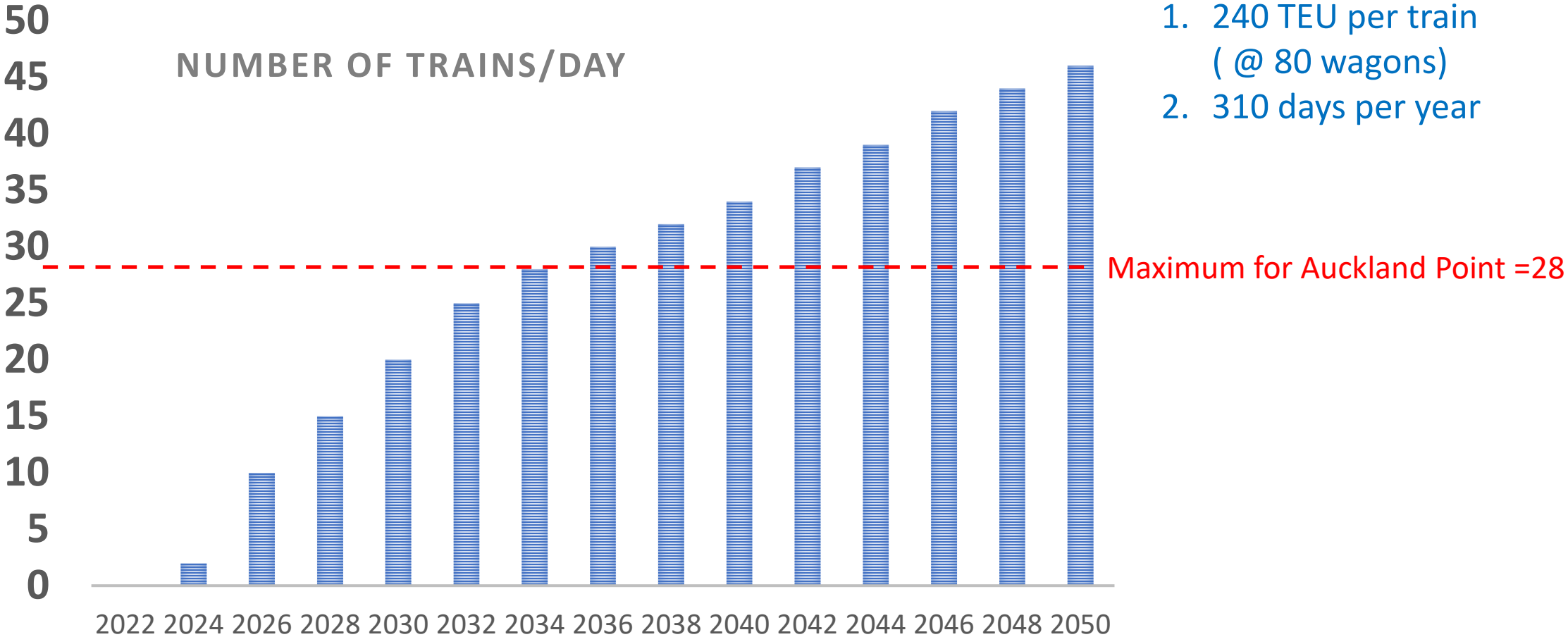
Total truck movements in+out planning basis



# PORT OF GLADSTONE

## Assumptions

- 1. 240 TEU per train ( @ 80 wagons)
- 2. 310 days per year



Total trains per day in+out - planning basis



Gallery and Museum

***IPG proposed location for stage 1.  
No formal agreements are in place***

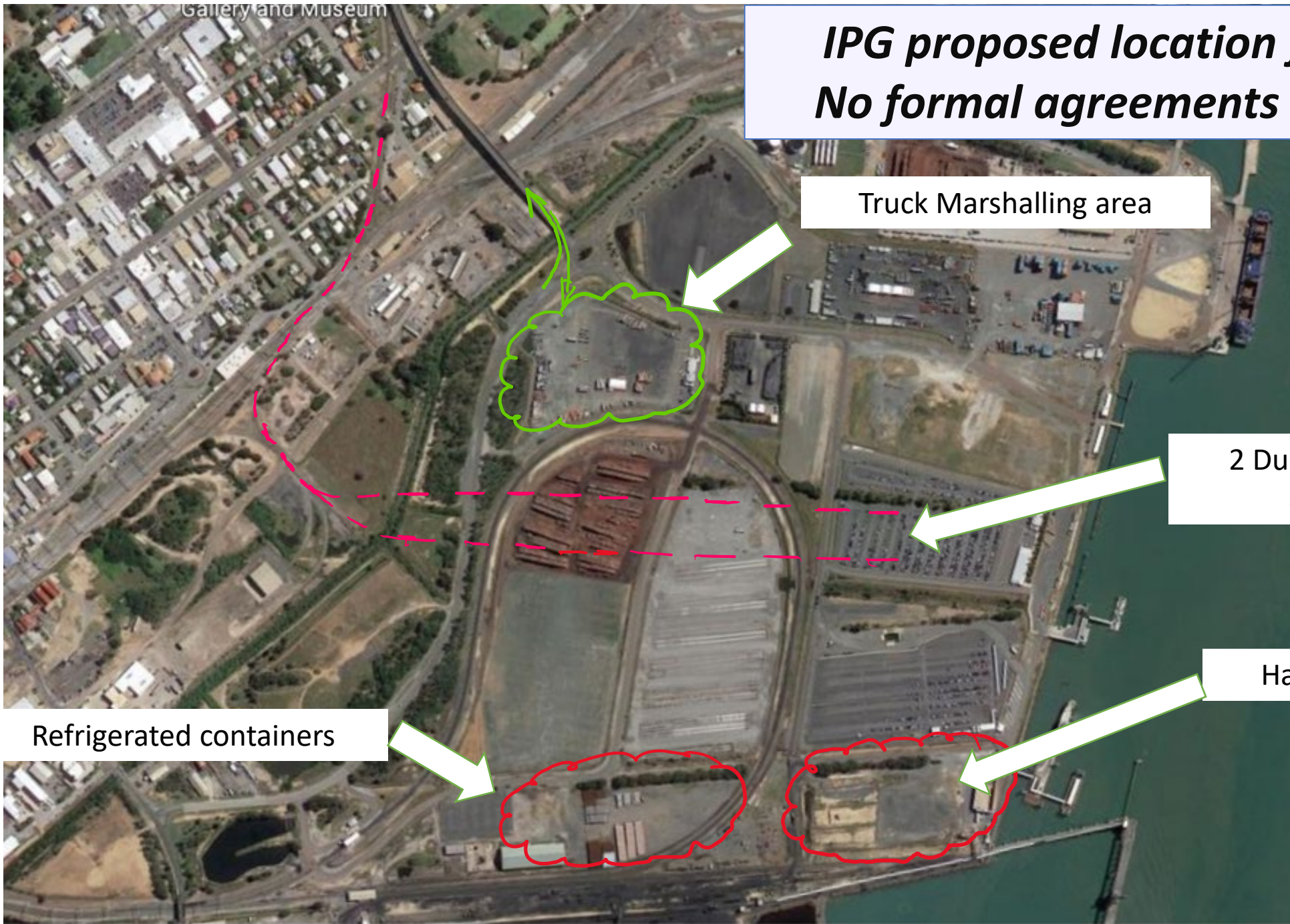
Truck Marshalling area

2 Dual Gauge rail lines  
at 800m each

Hazardous Goods area

Refrigerated containers

**I-PG**





***IPG proposed location for stage 1.  
No formal agreements are in place***



**Maximum train length = 1,600 m**

**Single height wagons**

**Both Standard and Narrow gauge**

**Approx time to cross Auckland St  
= 9 minutes for 80 wagon trains**

**Note:-  
formation of train consists will  
probably occur away from  
Auckland point.**

**I-PG**