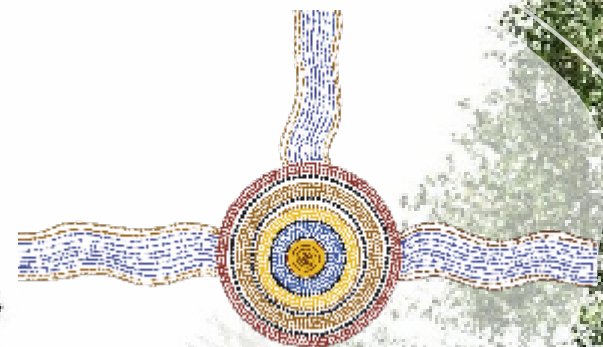


# Shelteristic 2025



# Shelteristic 2025



## The Background:

Over the past five years we have seen a dramatic increase in youth homelessness in regional Queensland. In 2019, in response to this growing concern within our community, we launched the Shelteristic project – a community led, collaborative approach to finding solutions to this escalating issue.

## Our Response:

Shelteristic 2025 is our response to this growing crisis. The development and building of affordable accommodation for the most vulnerable in our community.

## How are we going to do it:

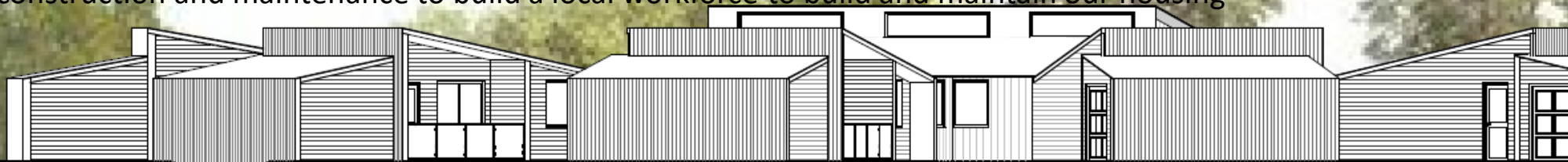
Through community, business and Government partnerships we will raise funds to develop Shelteristic accommodation and facilities throughout regional Qld.

## The Shelteristic Service Model:

Our affordable accommodation will be available for tenancy under a mutual obligation arrangement. Wrap around tenancy support, client-centric and responsive service connection and personal accountability.

## Capacity Building, Training & Employment:

We will provide opportunity for long-term unemployed and young people to access supported training in construction and maintenance to build a local workforce to build and maintain our housing



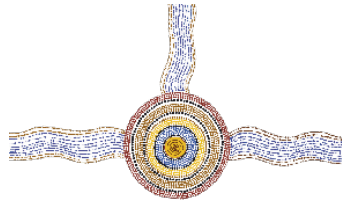
Annual cost of homelessness in Qld is \$145m

37% of youth homelessness is due to no affordable housing

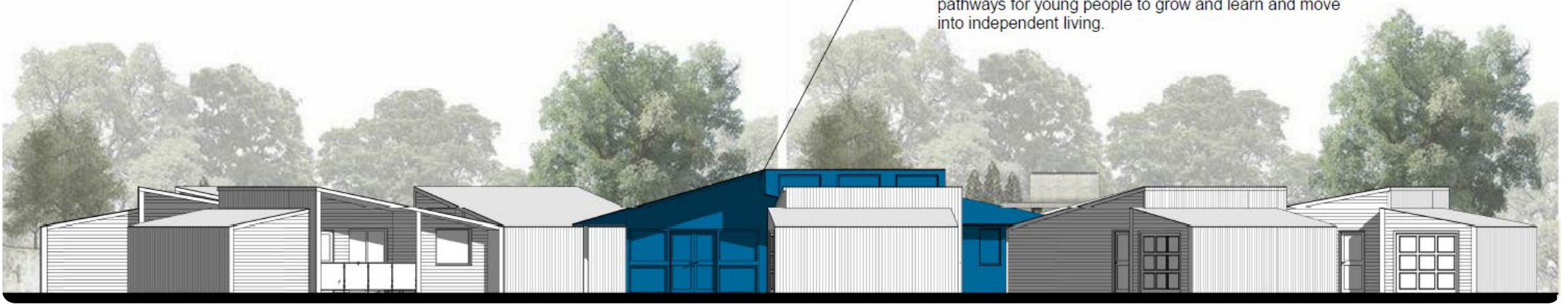
84% of homeless are unemployed

53% of homeless have a mental health condition

2 out of 3 homeless young people have experienced violence at home



- **Connected** by creating a homelike space that is connected to individual and connected to communal space  
Wrap around services needed to be provided to develop pathways for young people to grow and learn and move into independent living.



# The Background

---

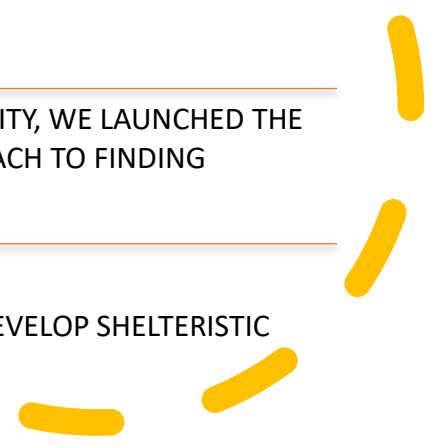
OVER THE PAST FIVE YEARS WE HAVE SEEN A DRAMATIC INCREASE IN YOUTH HOMELESSNESS IN REGIONAL QUEENSLAND

---

IN 2019, IN RESPONSE TO THIS GROWING CONCERN WITHIN OUR COMMUNITY, WE LAUNCHED THE SHELTERISTIC 2025 PROJECT – A COMMUNITY LED, COLLABORATIVE APPROACH TO FINDING SOLUTIONS TO THIS ESCALATING ISSUE.

---

IN 2021, GIDARJIL AND ROSEBERRY QLD AGREED TO WORK TOGETHER TO DEVELOP SHELTERISTIC AND DEVELOP A TANGIBLE RESPONSE TO HOMELESSNESS



## Shelteristic Project

*Shelter: 'shielded or safe condition; protection'*  
(Cambridge English Dictionary)

### Building Design Scope

**Common areas** to facilitate social activities, shared spaces and quiet areas

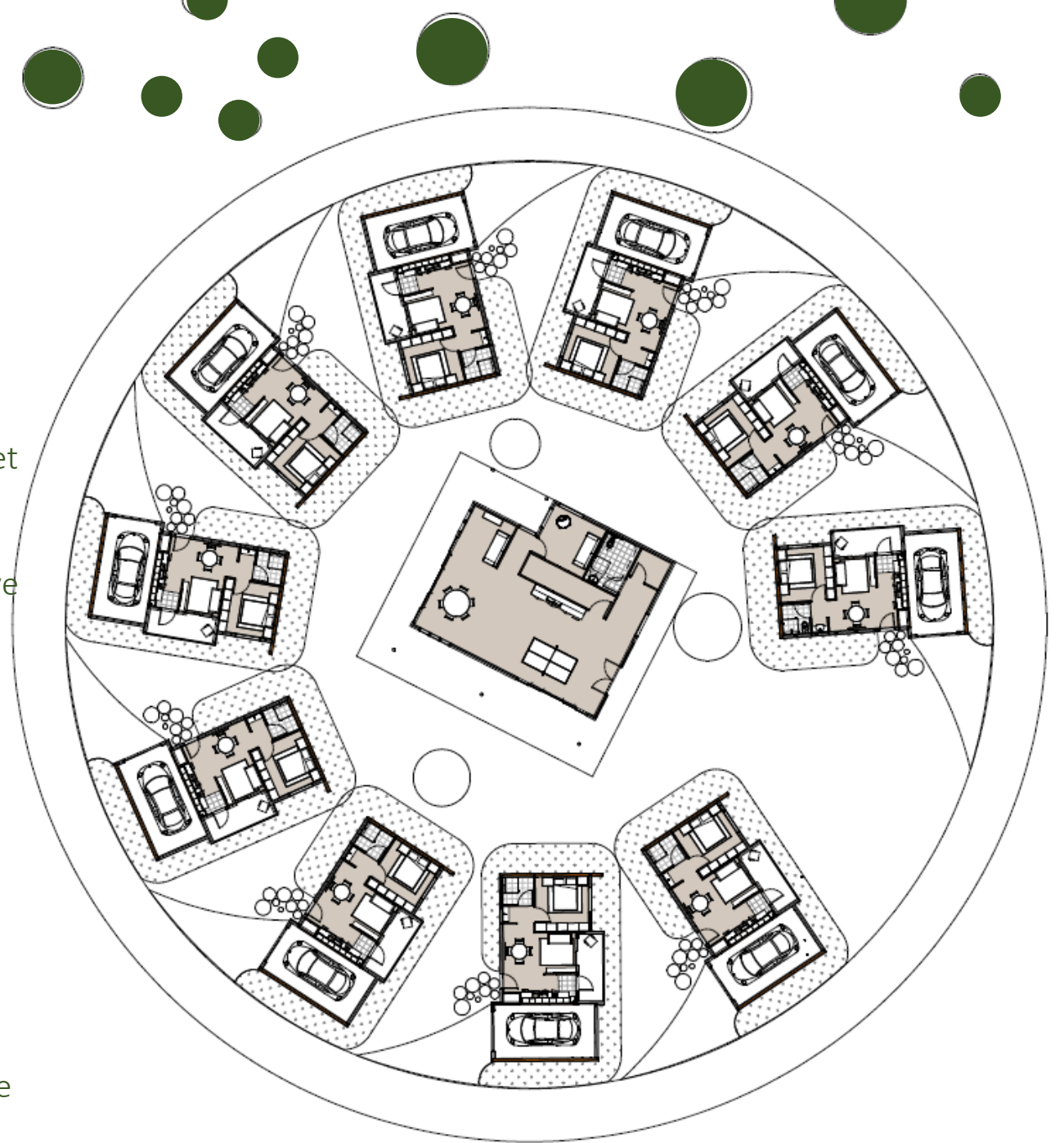
**Spatiality** to allow for room to move and several safe spaces to have time-out or quiet conversations

**Safety & Privacy** that provides a feeling of safety whilst still able to obtain support when required

**Location** close to services, employment and education – encouraging independence

**Connected** by creating a homelike space that is connected to individual and connected to communal space

**Eco-design** to reduce environmental footprint and encourage reuse and recycling





## Service Model Design

### *Supportive:*

Majority of participants identified the need for support to maintain tenancy, learn life-skills, connect with employment and training and access health and welfare services. Provision of just a safe place to stay wasn't viewed as a stand-alone solution. Wrap around services needed to be provided to develop pathways for young people to grow and learn and move into independent living.

### *Requires Mutual Responsibility:*

There was recognition that provision of a shelter needs to be linked to personal accountability – whether this was through a rental contribution (financial) and/or a commitment to regular supports/services/social activities.

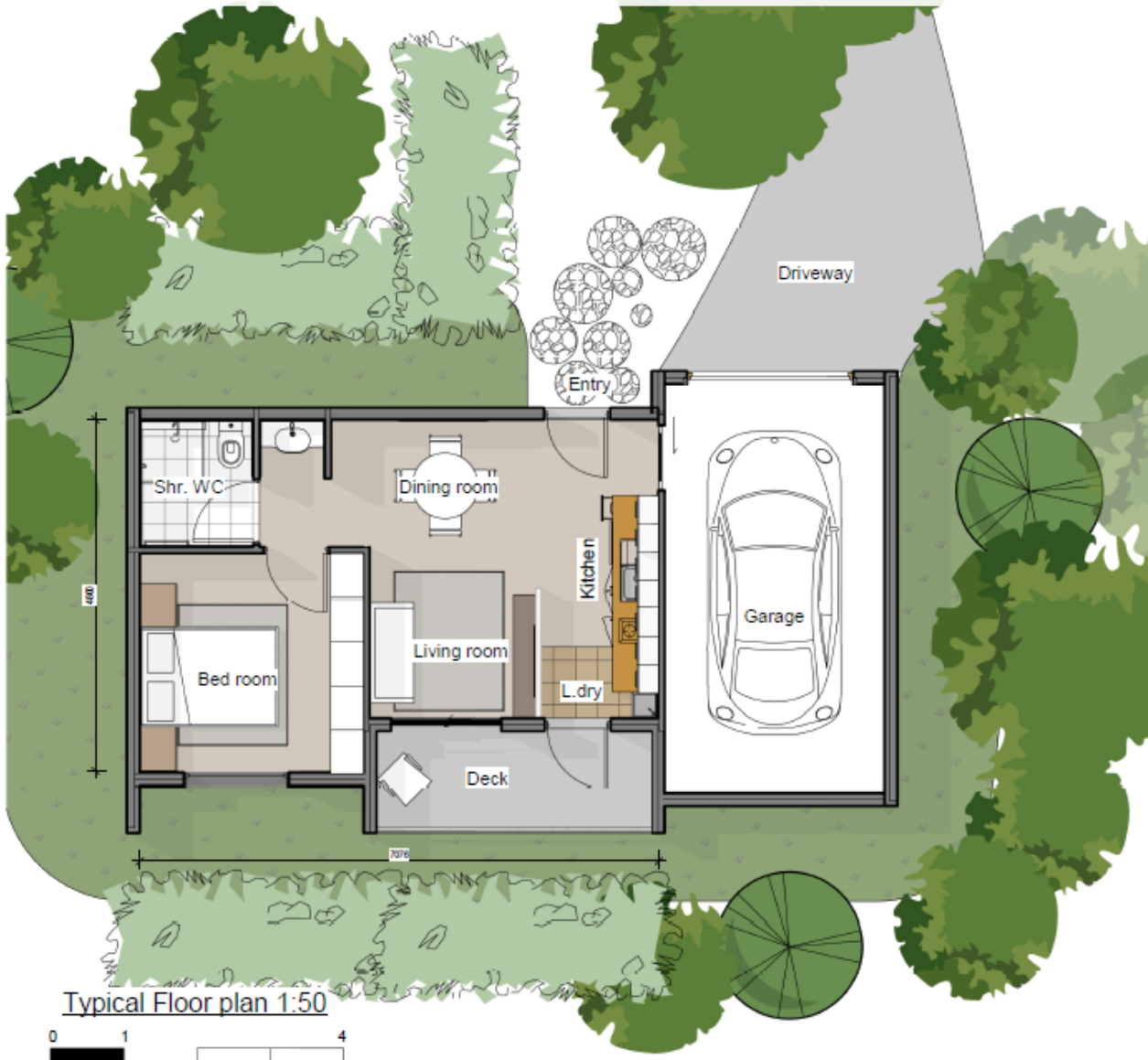
### *Client-centric & Responsive*

The service model – including wrap around services/clinical support/tenancy support needs to be centred around each individual. Possible option is through a responsive case management model allowing for services to create a plan that is tailored around individual needs and a holistic approach to self-development and independence. The service model needs to be responsive to changes within the community – social or economic impacts, so that service is adaptable to meet changing needs/demands of client/community.



10 Tiny Houses – Independent Living – Supported Tenancy  
Affordable – Socially Inclusive – Community Living

# Self Contained – Safety – Mutual Responsibility - Privacy



Typical Floor plan 1:50



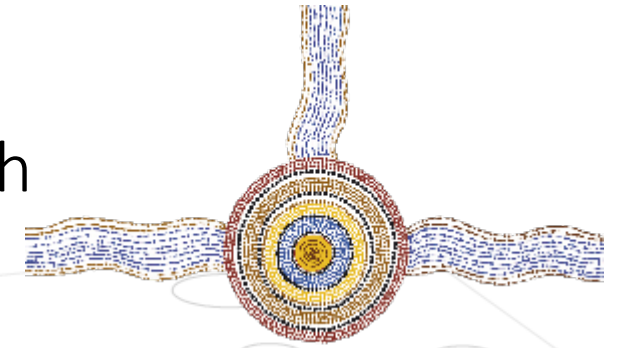
Front Elevation



Deck and back Elevation



# Community Led – Collaborative Approach



## Shelteristic Pty Ltd

RTO Training

Partners

Yalga-Bimbi Institute –  
Training Construction  
Projects

Local  
Government

Land-Rates-Development  
Support

Construction  
Partners

Kennelly Construction –  
Yaba Homes

Qld Government

Partnering for Growth -  
Land -Capital Funding  
Program Support

Community  
Partners

Corporate, Business and  
Individual Philanthropic  
Investors

Cwth  
Government

First Nations Funding -  
IBA – NIAA- IAS