




Fitzroy Basin Association Inc.





FBA would like to formally acknowledge the traditional custodians of the land upon which we meet today and pay our respects to their elders, past, present and emerging.

Today

- Who is FBA
- What we do
- Future opportunities



The Fitzroy Region

One of the most variable climates in the world

~ twice the area of Tasmania (156,000 km²)

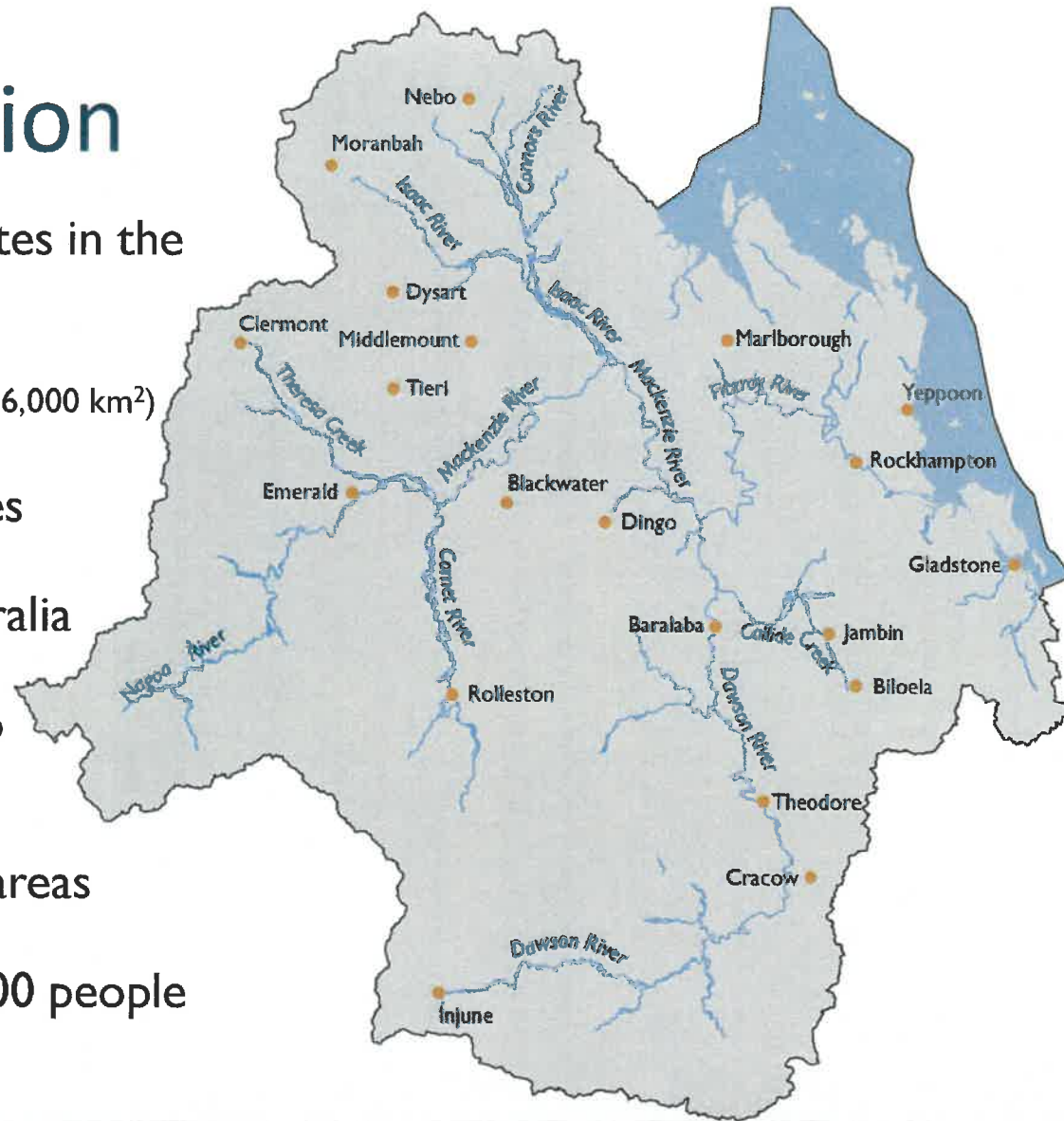
Diverse land types and land uses

2nd largest river system in Australia

Largest catchment draining into the Great Barrier Reef lagoon

Overlaps 12 local government areas

And home to more than 235,000 people

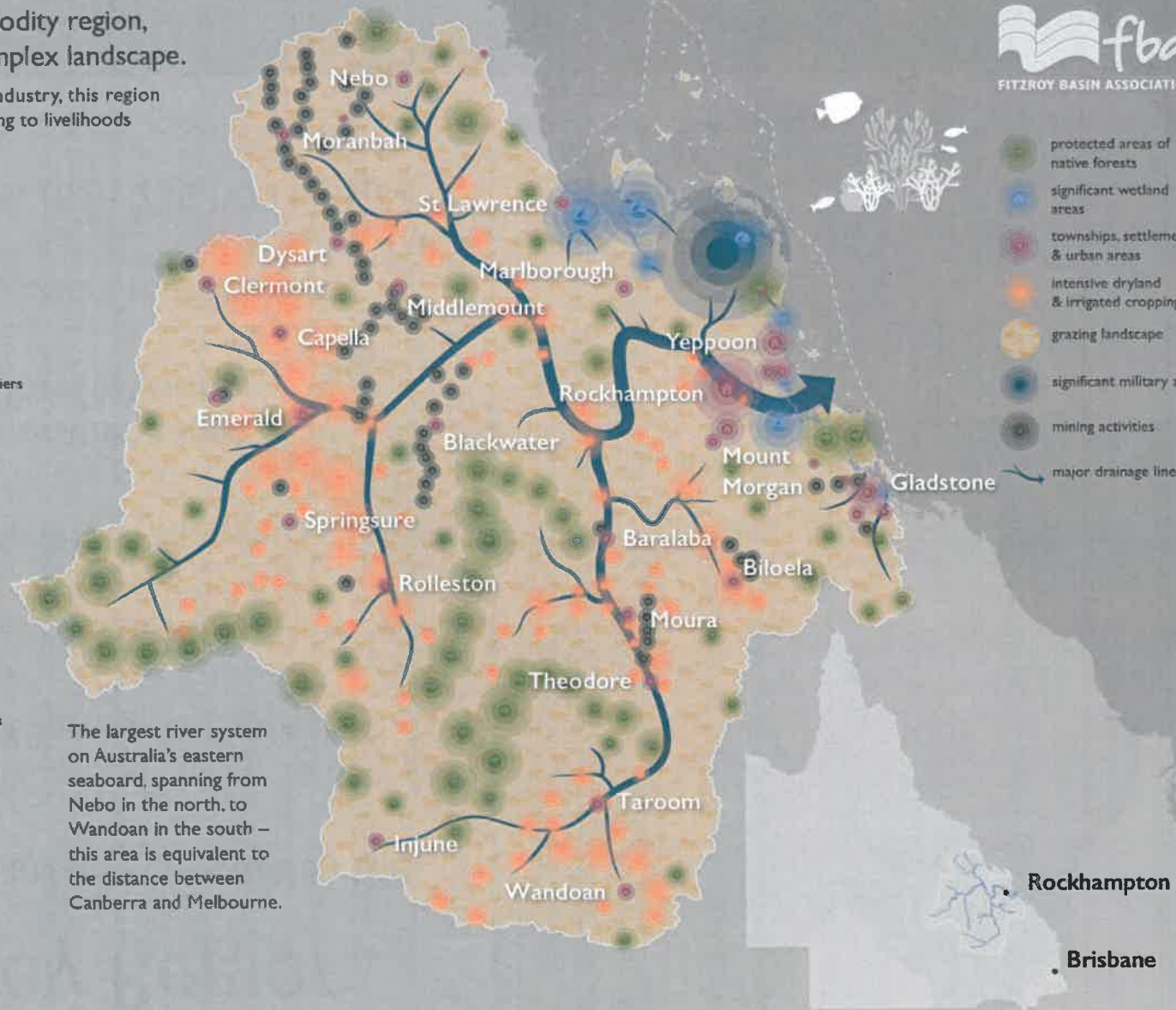


Queensland's highest commodity region, the Fitzroy, is a vast and complex landscape.

Abundant and diverse in productive industry, this region is an economic powerhouse, contributing to livelihoods across the country.



- protected areas of native forests
- significant wetland areas
- townships, settlements & urban areas
- intensive dryland & irrigated cropping
- grazing landscape
- significant military zone
- mining activities
- major drainage lines



3.2 million
head of cattle



80%
of land in the region is managed by farmers and graziers



6075
native plants and animal species thrive in the Fitzroy region



263
rare or threatened species



1/3 of Queensland's wetlands – that's approximately **8,534 wetlands**



125
Great Barrier Reef islands



74%
of Queensland's active coal mines



Home to the **3rd largest** coal exporting terminal in the world

The largest river system on Australia's eastern seaboard, spanning from Nebo in the north, to Wandoan in the south – this area is equivalent to the distance between Canberra and Melbourne.

Rockhampton
Brisbane



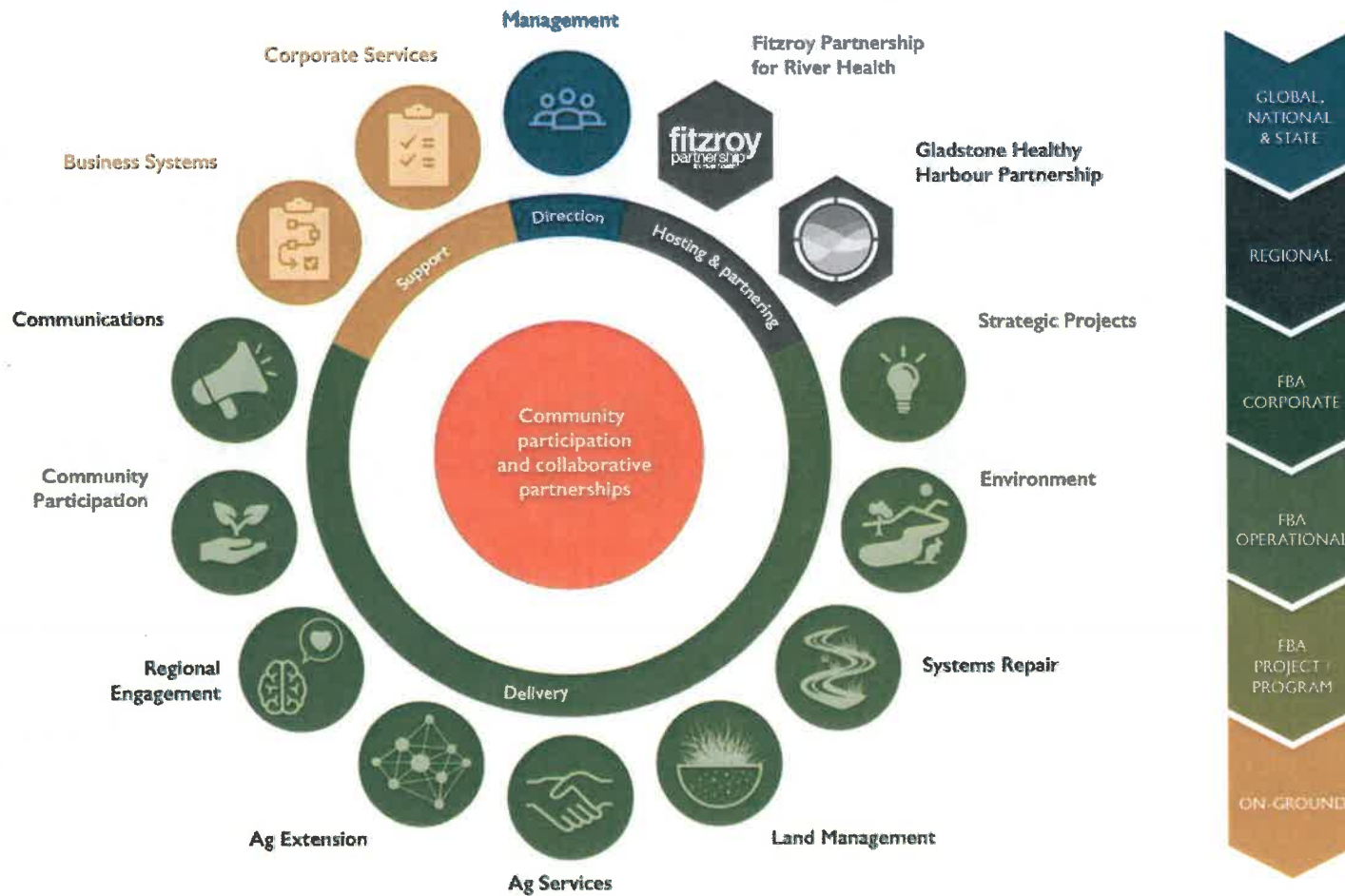
We are the **PEOPLE**

shaping the **ENVIRONMENT**

of the **FUTURE**

FBA Structure / Governance

FBA's Board and Membership represent a diverse cross-section of our community
You can find them at www.fba.org.au



Our organisation

- Offices in Rockhampton, Gladstone, Theodore and Emerald
- Skills based board
- Profit-for-purpose community based organisation
- Part of a national network of NRMs
- Various investors and programs
- Redefining our strategy, goals and value proposition

Our goals

Lead regional connection and collaboration

Leverage knowledge, science and partnerships

Create value through people and solutions

Key plans under review

Regional NRM Plan – CQSS:2030

Fitzroy WQIP:2015

WE ACHIEVE LONG-TERM SUCCESS THROUGH YOUR INVESTMENT AND OUR...

Extensive and
trusted networks



Credible science
and expertise



In-depth
understanding of
the Fitzroy Region



20+ years of
continuous
improvement



Partnerships and alliances

Community Engagement

Education

Advocacy

Investment

Innovation

Our current programs

- Sustainable Agriculture Practices
 - Change processes
- Water quality improvement
 - Streambank remediation
 - Gully erosion control
- Protecting Species and Habitats
- Community participation
 - Citizen Science, Education, Capacity Building (grants) and Behaviour Change



Landholder programs

- Reef Trust 1,2,3, 4
- Great Barrier Reef Foundation (GBRF)
- Farm Advisory Service
- Agriculture Extension Networks
- Sustainable Agriculture Practices
- Pest Management
(Qld Feral Pest Initiative)
- Reef Regulations - GRASS program
(Grazing Resilience and Sustainable Solutions)
- Brigalow Offsets



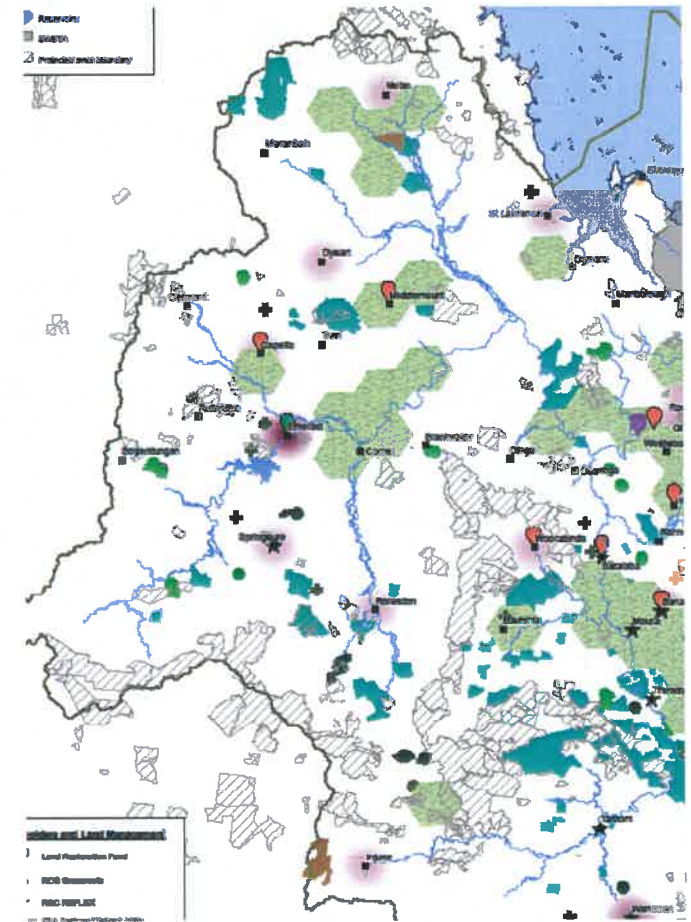
Enviro programs and community projects

- Team Turtle CQ
- LMAC Drain Buddies
- Regional Land Partnerships (RLP) Coastal Ecosystems
- Community Grants
- Cats Claw Creeper Biocontrol (Jewel Beetle) Nursery
- Gidarjil participation in projects
- Stakeholder engagement and representation (eg. Air Quality, CPMG)



Where are
our common
connections?

- Regional planning and feedback
- Pest Management
- Indigenous engagement
- Species and Habitats
- Community events and capacity building
- Drought Resilience
- Land Management including Landcare support (RALF)



REGIONAL NRM PLANNING

Starting with extensive community consultation to develop the first NRM plan for the region, FBA launched Central Queensland's Sustainability Strategy in 2000. It was extensively reviewed and re-written in 2004 and launched as CQSS2. After a decade and indepth industry and community consultation the plan was further refined and 2014 saw the launch of CQSS:2030. The plan, its relevancy and regional delivery progress is reviewed by FBA every five years. In addition to a regional strategy to achieve sustainability, FBA orchestrated the region's first Water Quality Improvement Plan (WQIP:2015) and reviews and reports on regional progress against targets every five years.



Soil



Groundwater



Rivers &
Wetlands



Marine
Ecosystems



Terrestrial
Ecosystems



Climate & Air

CQSS2030

CENTRAL QUEENSLAND
Sustainability Strategy 2030

Gladstone Healthy Harbour Partnership

- FBA is a partner in GHHP (and also the Host)
- Independent reporting of health of water quality in the Harbour
- Annual report card includes Environmental, Social, Economic and Cultural indicators
- Network of water health reporting along the coastline

Cats Claw Creeper BioControl Facility

Breeding Jewel Beetles for release in Boyne Valley & Boat Creek Cats Claw Creeper infestations

Reduces plant vigor and seed set

- ✓ Gidarjil Skilling Queenslanders for Work program
- ✓ Dedicated community volunteers
- ✓ GRC Biosecurity & Pest Management support

<https://www.fba.org.au/community-comes-together-to-fight-cats-claw/>



Fitzroy Basin Association Project Cats Claw Creeper Biocontrol Nursery

Cats Claw Creeper is a highly invasive vine that smothers and kills waterway vegetation, reducing biodiversity and increasing erosion. Jewel beetles are bred here for release into wild infestations as a weed management tool.



Drain Buddies

- Stage 1 complete
- Stage 2 underway
- Synergies with other projects
 - GRC DES litter reduction project with Reef Guardian Schools
 - CQU – Microplastic research
 - Qld Litter & Illegal Dumping Framework
 - Regional Report Cards – FPRH & GHHP



What's Down Gladstone's Drains?

Fitzroy Basin Association (FBA), with the help of several local community groups and volunteers, have audited nine drains in Gladstone over 12 months

This is the data...



6,759 cigarette butts -
That's **130** butts every
week



281kg of litter and
11,768 items removed
from Gladstone drains



The Sept - Nov 2019
period recorded **43%**
of the total litter over
12 months



The drain on the cnr
of Tank Street and Off
Street is a litter hotspot



This drain collected
3,218 items over 12
months



That's **57%** more
than the 2nd worst
drain in Gladstone!

Team Turtle CQ

- Volunteer beach monitoring (and training)
- Facing Island resident engagement
- GPC support
- Gidarjil engagement
- Signage & community based social marketing

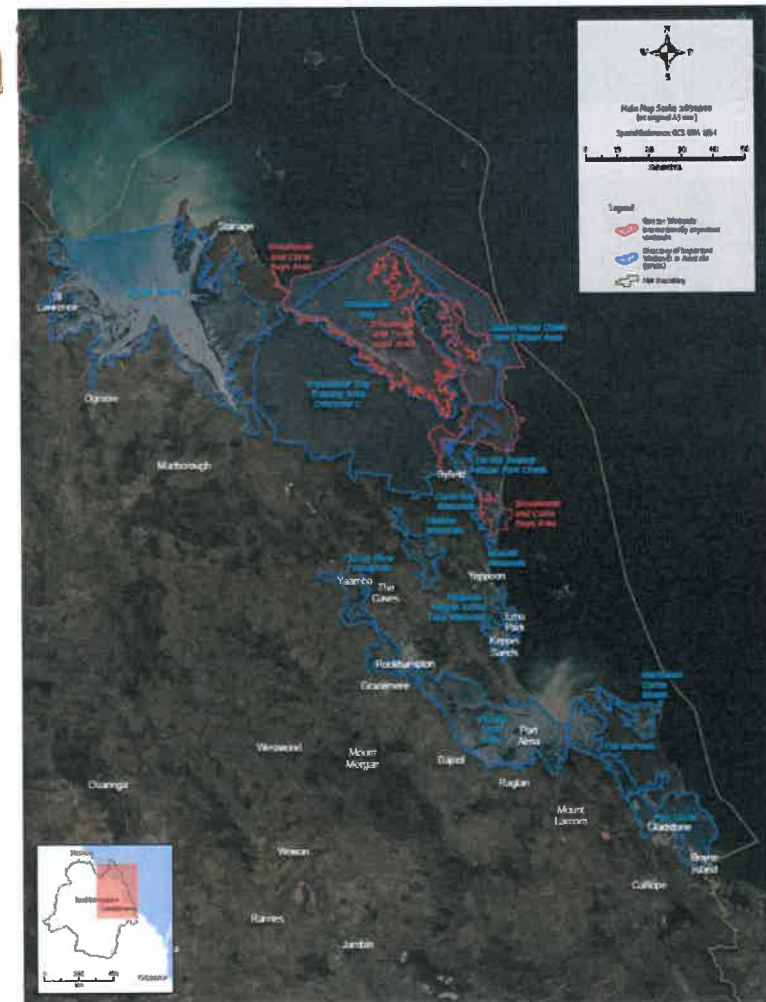


Regional Land Partnerships Coastal Ecosystems

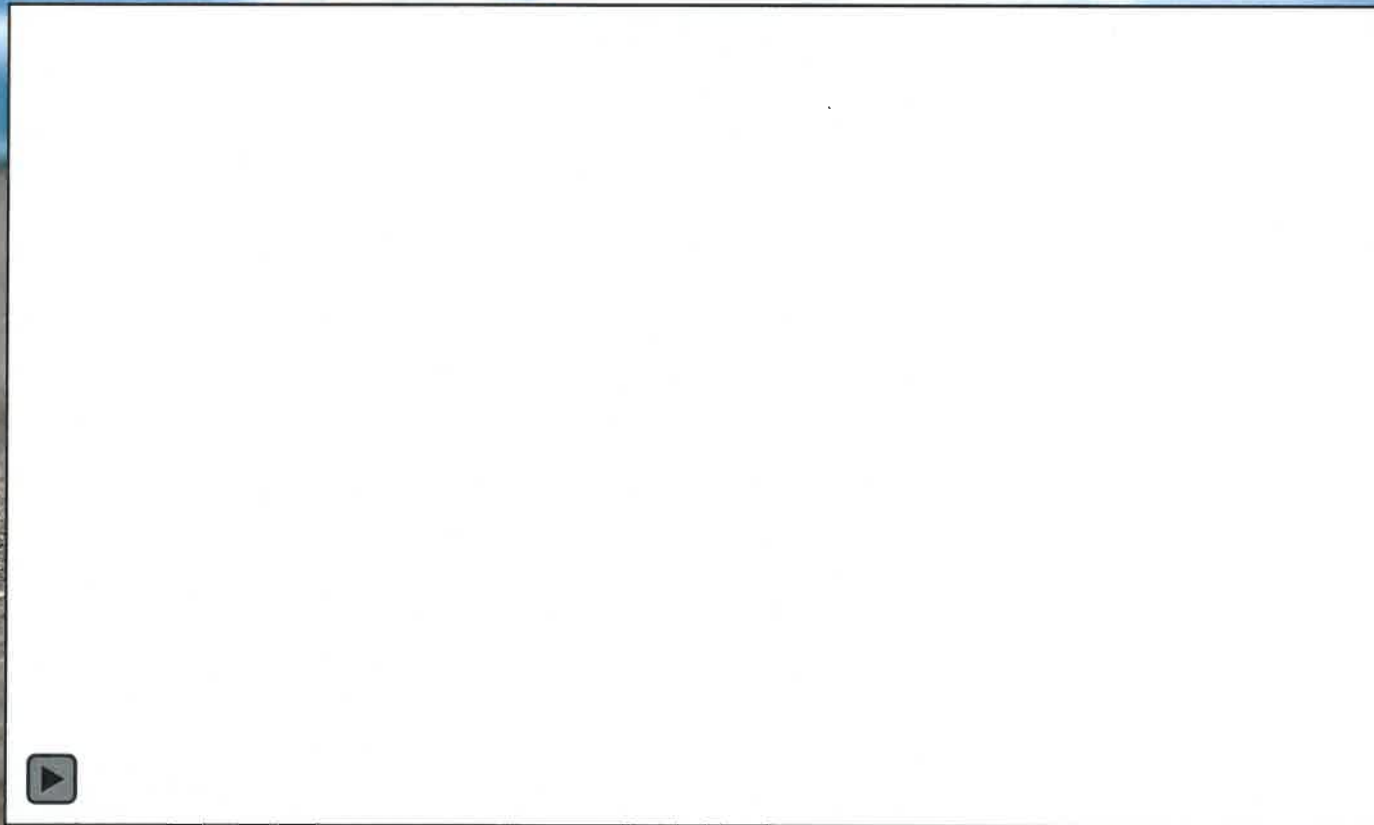
Three-year program ending 30 June 2023

Project deliverables in the Gladstone Region:

- Feral animal control (pigs and foxes)
- Weed control
- Marine debris removal
- Indigenous engagement
- Fauna, flora, pest and weed surveys (100+)



This year we celebrate Team Turtle CQ



You may not know we are also involved in....

- Fitzroy Regional Resilience Strategy
- Tree Planting
- Nutrient Recycling
- Rookwood/ Sunwater
- **Research** - FBA partners with universities and government agencies to link science to on-ground action
- **Trials** - Partner with industry and industry leaders to test and promote practical solutions (eg. Pasture dieback)
- Carbon Offsets
- Reef Credits

What are your ideas?
Where can we better collaborate in
Gladstone's Local Government Area?

Sign up to our email newsletter and
receive our latest news and events

fba.org.au/connect-with-fba/



Tree Planting

- Targeting 200,000 trees per year in Fitzroy Basin
- Identify credits or offsets for the trees or habitat established as income to the landholder
- Develop the capacity locally to regenerate endangered and threatened species and identify climate analogues
- A successful program with multiple benefits will likely have ongoing funding and landholder interest



Streambank restoration at Yaamba

AIM

Stabilise 1.2km of the Fitzroy River which lost 266,000 tonnes of sediment (and 20m of bank) during and after STC Debbie in 2017

SOLUTION

1,742 log piles (6-10m long) to slow and eddy water flow

Jute mesh and revegetate reprofiled bank (70,000 natives)

1.2km stock exclusion fencing

Ongoing monitoring and maintenance

Coordinated pest control aerial shoots

OUTCOME

90,000 tonnes sediment savings annually

